



# Mid-Ohio Psychological Services, Inc.

624 East Main Street - Lancaster, OH 43130

Voice (740) 687-0042

www.mopsohio.com

Fax (740) 687-MOPS (6677)

---

## QA REPORT

**TO:** Bradley A. Hedges, Ph.D.  
Executive Director

**FROM:** Shawna Watts-Shumaker, MBA  
Quality Assurance Coordinator

**SUBJECT:** Quality Assurance Activities Second Quarter of Fiscal Year 2005  
October, November, December

**SUBMITTED:** April 6, 2005

### MAJOR UNUSUAL INCIDENTS

There were three major unusual incidents for the second quarter of FY2005.

The first incident occurred on 11/12/2004 when client #041020H1 left the Franklin County agency premises due to being upset and had to be returned to the agency by the Columbus Police Department. The client returned willingly. The incident was reported to the Fairfield County ADAMH Board on the same day.

The second incident occurred on 11/12/2004 when client #03022004 exited the vehicle of an agency case manager while they were enroute to Fairfield Medical Center for an evaluation of the client. The Lancaster City Police were called and Emergency Services ordered a "pink slip" so the client could be brought in by the police. The client was picked up and transported to Fairfield Medical Center to be evaluated. The incident was reported on 11/15/2004, the first business day following the incident.

The third incident occurred on 11/22/2004 when client #04112202 made threats toward the mother's boyfriend. This resulted in a duty to protect notification being made to the client's mother and boyfriend. The mother indicated threats had been made to other third parties in the past against the boyfriend as well by the client.



AN INDEPENDENT CONTRACT AGENCY OF THE FAIRFIELD COUNTY ADAMH BOARD

The number of MUI's continues to be high in comparison to agency history; however, it has remained rather consistent over the past calendar year. This trend will be followed in future quarters.

### **TRANSFERS FROM STATE HOSPITALS**

There were four transfers from the state hospital in during the second quarter, which is higher than the agency's historical average. There were five clients who were hospitalized for psychiatric care in community hospitals. This is a decrease from the eight hospitalizations that were made in the same time frame one year ago and a increase from the four hospitalizations made last quarter.

Clinicians are complying with requirements that clients be seen within fourteen days of discharge after hospitalization, most are seen within seven days.

### **PLANT//PHYSICAL HEALTH AND SAFETY**

No health or safety issues were identified by the building inspection in the month of November.

### **RECORDS COMPLETENESS REVIEW**

An average of 80% of clinicians met the 95% threshold for the record completeness.

Areas contributing to the failure rates of clinicians included:

- Forty-two percent of the records reviewed were missing a copy of the current medical card.
- Thirty-one percent of the records reviewed were missing forms or had incomplete forms in the chart.
- Signatures were missing on some forms in the chart for 25% of the clinicians.
- In 28% of the records reviewed there was at least one session recorded that did not match the billing record.
- Twenty-two percent of the records reviewed had an Individual Service Plan on the chart that needed to be updated.
- Nineteen percent of the records reviewed did not have a reviewed health assessment.

### **PEER REVIEW**

An average of 83% of clinicians are meeting the 90% threshold for peer review. This was a decrease of 7% from the second quarter of 2004. There seems to be no pattern for any one clinician failing peer review at this point. The largest area of trouble is records not being maintained consistently.

## UTILIZATION REVIEW

There were a total of 282 new clients to the MOPS General Program during the second quarter, a thirty-three percent increase from the first quarter of 2005. This is the first increase in almost a year. Sixty-four percent of the new clients for the MOPS General Program were from Fairfield County.

The table below shows the total number of units of services that were rendered under each services area for the third and fourth quarter of 2004, and the first and second quarter of 2005.

Service Area	3 <sup>rd</sup> Quarter 2004	4 <sup>th</sup> Quarter 2004	1 <sup>st</sup> Quarter 2005	2 <sup>nd</sup> Quarter 2005
Diagnostic Assessment	526	400	333	482
Individual Counseling	2516	2515	2396	2373
Group Counseling	499	485	549	546
CSP	1510	1258	907	792
Medication/Somatic	182	141	141	124
AOD Group	22	4	0	0

Increases in diagnostic assessments can be attributed to an increase in client intakes. The slight decreases in individual and group counseling and medication management services may be attributed to the holidays during this quarter. The decline in CSP services can be attributed to a decrease in the number of clients being referred for these services.

There are no AOD groups being held at this time, clients with AOD needs are seen on an individual basis.

Attached to this report is a summary of service statistics reflecting demographic information on the clients who initiated services during this quarter.

## AOD UTILIZATION REVIEW

There are currently no AOD groups active within the agency. AOD clients continue to be seen on an individual basis.

## INVOLUNTARY TERMINATIONS

No involuntary terminations were conducted during the second quarter of 2005.

## REVIEW OF WAITING LIST

MOPS does not maintain a wait list. Clients continue to be scheduled in the next available time slot as they request services. At this time, new client appointments are being scheduled within 30 days.

## GENERAL COMMENTS

The overall QA process is continuing to improve. Monthly QA meetings are being held. The committee continues to improve in the thoroughness of QA. The QA letters given to clinicians continue to contain more detailed information on how corrections can be made and suggestions for improvement. QA activities are current at this time.

The focused area of review for October was to review the number of clients released from psychiatric inpatient care that do not receive necessary services within two weeks of requesting them and to conduct a fire drill.

A review of clients who had psychiatric hospital stays in the past twelve months was conducted. There were 39 incidents involving 29 clients being psychiatrically hospitalized; this is an increase from 25 incidents for the same time frame last year. There were twenty-two adults (75% of the clients) including 11 females and 11 males and seven children (24% of the clients) including 3 females and 4 males hospitalized. Three of the hospitalizations were in a state facility; all others were in community hospitals. On average (mean) the client's hospitalization lasted 17 days. The median length of stay was 6 days.

Two of the clients hospitalized on three separate occasions were children who do not have a diagnosis that would qualify as severely mentally disabled, however the hospitalizations may have occurred due to the lack of availability of placement in another setting such as foster care.

There were a total of 29 clients hospitalized, 17 (59%) of the clients were diagnosed with an affective disorder and 15 (52%) were diagnosed with a thought disorder. Fourteen (48%) of the clients who were hospitalized had co-occurring substance abuse issues and mental health issues.

Clients had an average of five contacts with the agency and missed one scheduled appointment in the ten days before admission to the hospital. All clients received services within 14 days of discharge. Clients had an average of five contacts with the agency in the ten days following their release from the hospital. They missed an average of one scheduled appointment in the same time period.

A fire drill was conducted on October 28, 2004 at 11:50 a.m. The drill message was delivered using the intercom on the phone system. Both buildings were evacuated in 1 minute 31 seconds.

The focused area of review for November is to invite members of a consumer advocacy group to the agency for a services review. Historically the committee has not been able to get members to participate in these activities, so the committee created a short survey to send to Fairfield County Children Services. As of this time, no surveys have been responded to.

The focused area of review for December was to review the policy and procedure manual for the agency. During the past year the agency has been preparing for a CARF Survey, so many of the policy and procedures have been reviewed and updated recently. The QA Committee only reviewed those policy and procedures that had not been reviewed as part of the CARF preparation. There were nine areas reviewed including; Abuse and Neglect, Accessibility, Affirmative Action, Client Rights, Informed Consent, Internet Usage, Records Control, Seclusion and Restraint, and Travel. There were some changes suggested due to language content, however after review with the Executive Director, it was decided that the language was required by accreditation sources (ODADAS and ODMH).

### **CLIENT RIGHTS AND GRIEVANCES**

There were no client rights or grievance issues for the second quarter of 2005.

cc: Fairfield County Mental Health and Recovery Services Board  
MOPS Board of Directors  
MOPS Staff  
QA Minutes Logbook

# MOPS General Program Summary Statistics

04-08-2005

## *Age of Clients:*

*For clients with a start date between 10/01/2004 and 12/31/2004*

<i>Average</i>	25.52
<i>Minimum</i>	4.00
<i>Maximum</i>	70.00
<i>Standard Deviation</i>	15.98
<i>Variance</i>	255.44

## *Gender of Clients:*

*For clients with a start date between 10/01/2004 and 12/31/2004*

<i>Gender</i>	<i># of People</i>
F	123
M	82
U	1

## *Number of People by City*

*With referral dates between 10/01/2004 and 12/31/2004*

Albany	1
Amanda	6
Ashville	1
Athens	1
Baltimore	6
Bremen	5
Canal Winchester	4
Chillicothe	1
Columbus	18

# MOPS General Program Summary Statistics

04-08-2005

Corning	1
Crooksville	1
Glenford	1
Glouster	1
Grove City	1
Hideaway Hills	1
Jackson	1
Kingston	3
Lancaaster	1
Lancaster	104
Lancaster,	2
Laurelville	2
Logan	11
Malta	1
Millersport	3
Moundsville	1
New Lexington	2
New Straitsville	1
Pickerington	3
Pleasantville	2
Pleasantville	1
Portsmouth	1
Rarden	1
Reynoldsburg	1
Roseville	2
Shawnee	2
So. Bloomingville	1
Springfield	1

# MOPS General Program Summary Statistics

04-08-2005

Sugar Grove	2
Thornville	1
Thurston	1
Union Furnace	1
Woodsfield	1
Zanesville	4

# MOPS General Program Summary Statistics

04-08-2005

## *Diagnosis per client:*

*For clients with a start date between 10/01/2004 and 12/31/2004*

---

<i>Average</i>	3.12
<i>Minimum</i>	1.00
<i>Maximum</i>	7.00
<i>Standard Deviation</i>	1.17
<i>Variance</i>	1.37

# MOPS General

## Program Summary Statistics

04-08-2005

### *Diagnosis*

*For clients with a start date between 10/01/2004 and 12/31/2004*

<i>Diagnostic Group</i>	<i>Diagnosis</i>	<i>Code</i>	<i># of People with Diagnosis</i>
Adjustment	Adjustment Disorder Unspecified	309.90	2
	Adjustment Disorder Unspecified	R/O309.9	1
	Adjustment Disorder Unspecified	309.9	8
	Adjustment Disorder With Anxiety	309.24	3
	Adjustment Disorder With Depressed Affect	R/O309.00	1
	Adjustment Disorder With Depressed Affect	309.00	6
	Adjustment Disorder With Depressed Mood	309.0	12
	Adjustment Disorder With Depressed Mood	R/O309.0	1
	Adjustment Disorder With Disturbance Of Conduct	309.30	1
	Adjustment Disorder With Disturbance Of Conduct	309.3	2
	Adjustment Disorder With Mixed Anxiety and Depressed Mood	309.28	13
	Adjustment Disorder With Mixed Disturbance of Emotions and Conduct	309.4	4
	Adjustment Disorder With Mixed Disturbance of Emotions and Conduct	309.40	6
	<b>Sum</b>		
Anxiety	Anxiety Disorder NOS	R/O300.00	1
	Anxiety Disorder NOS	300.00	4
	Generalized Anxiety Disorder	R/O300.02	1
	Generalized Anxiety Disorder	300.02	2
	Obsessive-Compulsive Disorder	R/O300.3	2
	Obsessive-Compulsive Disorder	300.3	1
	Panic Disorder With Agoraphobia	300.21	4
	Panic Disorder Without Agoraphobia	300.01	2
	Panic Disorder Without Agoraphobia	R/O300.01	1
	Posttraumatic Stress Disorder	R/O309.81	7
	Posttraumatic Stress Disorder	309.81	10
	Social Phobia	300.23	1
<b>Sum</b>			<b>36</b>
Behavioral	Attention Deficit Hyperactivity Disorder By History	314.02	12
	Attention-Deficit/Hyperactivity Disorder Combined Type	R/O314.01	4
	Attention-Deficit/Hyperactivity Disorder Combined Type	314.01	3
	Attention-Deficit/Hyperactivity Disorder Combined Type		

# MOPS General

## Program Summary Statistics

04-08-2005

	Attention-Deficit/Hyperactivity Disorder NOS	314.9	1
	Attention-Deficit/Hyperactivity Disorder NOS	R/O314.9	1
	Attention-Deficit/Hyperactivity Disorder Predominantly Hyperactive-Impulsive Type	R/O314.011	1
	Attention-Deficit/Hyperactivity Disorder Predominantly Hyperactive-Impulsive Type	314.011	4
	Attention-Deficit/Hyperactivity Disorder Predominantly Inattentive Type	R/O314.00	2
	Attention-Deficit/Hyperactivity Disorder Predominantly Inattentive Type	314.00	3
	Conduct Disorder	R/O312.8	1
	Conduct Disorder	312.8	2
	Conduct Disorder	312.80	1
	Conduct Disorder NEC	R/O312	1
	Disruptive Behavior Disorder NOS	312.9	3
	Encopresis,wo Constipation & Overflow Incontinence	307.7	3
	Enuresis(Not Due to a General Medical Condition)	307.6	2
	Impulse-Control Disorder NOS	312.30	1
	Neglect of Child	V61.212	2
	Oppositional Defiant Disorder	313.81	18
	Oppositional Defiant Disorder	R/O313.81	2
	Physical Abuse of Adult	V61.13	1
	Physical Abuse of Child	V61.211	1
	Separation Anxiety Disorder	R/O309.21	1
	Separation Anxiety Disorder	309.21	1
	Trichotillomania	312.39	2
		<b>Sum</b>	<b>73</b>
Cognitive/Organic	Borderline Intellectual Functioning	R/OV62.89	3
	Borderline Intellectual Functioning	V62.89	9
	Cognitive Disorder NOS	294.9	1
	Cognitive Disorder NOS	R/O294.9	1
	Learning Disorder Not Otherwise Specified	315.9	6
	Learning Disorder Not Otherwise Specified	R/O315.9	3
	Mental Retardation, Severity Unspecified,	319	2
	Mild Mental Retardation	317	3
	Mild Mental Retardation	R/O317	3
	Moderate Mental Retardation	318.0	2
	Moderate Mental Retardation	R/O318.0	1
	Mood Disorder Due to a General Medical Condition	293.83	1
	Phonological Disorder	315.39	2
	Reading Disorder	315.00	1
	Severe Mental Retardation	318.1	1

# MOPS General

## Program Summary Statistics

04-08-2005

			Sum	39
Mood	Bipolar Disorder NOS	R/O296.80		1
	Bipolar Disorder NOS	296.80		3
	Bipolar I Disorder, Most Recent Episode Depressed Moderate	R/O296.52		1
	Bipolar I Disorder, Most Recent Episode Unspecified	296.7		1
	Depressive Disorder NOS	R/O311		6
	Depressive Disorder NOS	311.		3
	Depressive Disorder NOS	311		19
	Dysthymic Disorder	300.4		7
	Major Depressive Disorder, Recurrent Mild	R/O296.31		2
	Major Depressive Disorder, Recurrent Mild	296.31		1
	Major Depressive Disorder, Recurrent Moderate	296.32		6
	Major Depressive Disorder, Recurrent Severe Without Psychotic Features	296.33		3
	Major Depressive Disorder, Single Episode Moderate	296.22		1
	Mood Disorder NOS	296.90		4
	Mood Disorder NOS	R/O296.90		2
			<b>Sum</b>	<b>60</b>
Other V-Codes	Academic Problem	V62.3		2
	Bereavement	V62.82		2
	Diagnosis Deferred on Axis II	R/O799.92		4
	Diagnosis Deferred on Axis II	799.92		10
	Neglect of Child(focus of attention is on victim)	995.53		8
	No Diagnosis on Axis II	R/OV71.092		25
	No Diagnosis on Axis II	V71.092		68
	No Diagnosis or Condition on Axis I	V71.091		6
	No Diagnosis or Condition on Axis I	R/OV71.091		1
	Parent-Child Relational Problem	R/OV61.20		5
	Parent-Child Relational Problem	V61.20		10
	Partner Relational Problem	V61.11		13
	Partner Relational Problem	R/OV61.11		1
	Phase of Life Problem	V62.892		1
	Physical Abuse of Adult(attention focus on victim)	995.811		7
	Physical Abuse of Child(attention focus on victim)	R/O995.52		1
	Physical Abuse of Child(attention focus on victim)	995.52		13
	Relational Problem NOS	R/OV62.81		1
	Relational Problem NOS	V62.81		5
	Sexual Abuse of Adult (attention focus on victim)	995.81		2
	Sexual Abuse of Child (attention focus on victim)	R/O995.51		2

# MOPS General

## Program Summary Statistics

04-08-2005

	Sexual Abuse of Child (attention focus on victim)	995.51	24
	Sibling Relational Problem	V61.8	2
			<b>Sum</b> 213
Paraphilias	Paraphilia NOS	302.9	2
	Pedophilia	302.2	1
	Pedophilia	R/O302.2	1
	Sexual Abuse of Adult	V61.12	2
	Sexual Abuse of Child	R/OV61.21	1
	Sexual Abuse of Child	V61.21	8
			<b>Sum</b> 15
Personality	Antisocial Personality Disorder	301.7	2
	Avoidant Personality Disorder	301.82	1
	Borderline Personality Disorder	R/O301.83	1
	Borderline Personality Disorder	301.83	2
	Dependent Personality Disorder	R/O301.6	1
	Personality Disorder NOS	301.9	7
	Personality Disorder NOS	R/O301.9	8
			<b>Sum</b> 22
Psychosis	Psychotic Disorder NOS	R/O298.9	1
	Schizophrenia Paranoid Type	295.30	1
			<b>Sum</b> 2
Substance Use	Alcohol Abuse	R/O305.00	1
	Alcohol Abuse	305.00	4
	Alcohol Dependence	303.90	6
	Amphetamine (or Amphetamine-Like) Dependence	304.40	1
	Cannabis Abuse	305.20	4
	Cannabis Dependence	304.30	4
	Cocaine Dependence	304.20	1
	Polysubstance Dependence	304.80	5
	Polysubstance Dependence	R/O304.80	2
	Sedative, Hypnotic, or Anxiolytic Dependence	304.10	1
			<b>Sum</b> 29

# Scioto County Program Summary Statistics

04-08-2005

## *Age of Clients:*

*For clients with a start date between 10/01/2004 and 12/31/2004*

<i>Average</i>	25.52
<i>Minimum</i>	4.00
<i>Maximum</i>	70.00
<i>Standard Deviation</i>	15.98
<i>Variance</i>	255.44

## *Gender of Clients:*

*For clients with a start date between 10/01/2004 and 12/31/2004*

<i>Gender</i>	<i># of People</i>
F	123
M	82
U	1

## *Number of People by City*

*With referral dates between 10/01/2004 and 12/31/2004*

Albany	1
Amanda	6
Ashville	1
Athens	1
Baltimore	6
Bremen	5
Canal Winchester	4
Chillicothe	1
Columbus	18

# Scioto County Program Summary Statistics

04-08-2005

Corning	1
Crooksville	1
Glenford	1
Glouster	1
Grove City	1
Hideaway Hills	1
Jackson	1
Kingston	3
Lancaaster	1
Lancaster	104
Lancaster,	2
Laurelville	2
Logan	11
Malta	1
Millersport	3
Moundsville	1
New Lexington	2
New Straitsville	1
Pickerington	3
Pleasantville	2
Pleasantville	1
Portsmouth	1
Rarden	1
Reynoldsburg	1
Roseville	2
Shawnee	2
So. Bloomingville	1
Springfield	1

# Scioto County Program Summary Statistics

04-08-2005

Sugar Grove	2
Thornville	1
Thurston	1
Union Furnace	1
Woodsfield	1
Zanesville	4

# Scioto County Program Summary Statistics

04-08-2005

## *Diagnosis per client:*

*For clients with a start date between 10/01/2004 and 12/31/2004*

---

<i>Average</i>	3.12
<i>Minimum</i>	1.00
<i>Maximum</i>	7.00
<i>Standard Deviation</i>	1.17
<i>Variance</i>	1.37

# Scioto County Program Summary Statistics

04-08-2005

## *Diagnosis*

*For clients with a start date between 10/01/2004 and 12/31/2004*

<i>Diagnostic Group</i>	<i>Diagnosis</i>	<i>Code</i>	<i># of People with Diagnosis</i>
Adjustment	Adjustment Disorder Unspecified	309.90	2
	Adjustment Disorder Unspecified	R/O309.9	1
	Adjustment Disorder Unspecified	309.9	8
	Adjustment Disorder With Anxiety	309.24	3
	Adjustment Disorder With Depressed Affect	R/O309.00	1
	Adjustment Disorder With Depressed Affect	309.00	6
	Adjustment Disorder With Depressed Mood	309.0	12
	Adjustment Disorder With Depressed Mood	R/O309.0	1
	Adjustment Disorder With Disturbance Of Conduct	309.30	1
	Adjustment Disorder With Disturbance Of Conduct	309.3	2
	Adjustment Disorder With Mixed Anxiety and Depressed Mood	309.28	13
	Adjustment Disorder With Mixed Disturbance of Emotions and Conduct	309.4	4
	Adjustment Disorder With Mixed Disturbance of Emotions and Conduct	309.40	6
	<b>Sum</b>		
Anxiety	Anxiety Disorder NOS	R/O300.00	1
	Anxiety Disorder NOS	300.00	4
	Generalized Anxiety Disorder	R/O300.02	1
	Generalized Anxiety Disorder	300.02	2
	Obsessive-Compulsive Disorder	R/O300.3	2
	Obsessive-Compulsive Disorder	300.3	1
	Panic Disorder With Agoraphobia	300.21	4
	Panic Disorder Without Agoraphobia	300.01	2
	Panic Disorder Without Agoraphobia	R/O300.01	1
	Posttraumatic Stress Disorder	R/O309.81	7
	Posttraumatic Stress Disorder	309.81	10
Social Phobia	300.23	1	
<b>Sum</b>			<b>36</b>
Behavioral	Attention Deficit Hyperactivity Disorder By History	314.02	12
	Attention-Deficit/Hyperactivity Disorder Combined Type	R/O314.01	4
	Attention-Deficit/Hyperactivity Disorder Combined Type	314.01	3

# Scioto County

## Program Summary Statistics

04-08-2005

	Attention-Deficit/Hyperactivity Disorder NOS	314.9	1
	Attention-Deficit/Hyperactivity Disorder NOS	R/O314.9	1
	Attention-Deficit/Hyperactivity Disorder Predominantly Hyperactive-Impulsive Type	R/O314.011	1
	Attention-Deficit/Hyperactivity Disorder Predominantly Hyperactive-Impulsive Type	314.011	4
	Attention-Deficit/Hyperactivity Disorder Predominantly Inattentive Type	R/O314.00	2
	Attention-Deficit/Hyperactivity Disorder Predominantly Inattentive Type	314.00	3
	Conduct Disorder	R/O312.8	1
	Conduct Disorder	312.8	2
	Conduct Disorder	312.80	1
	Conduct Disorder NEC	R/O312	1
	Disruptive Behavior Disorder NOS	312.9	3
	Encopresis,wo Constipation & Overflow Incontinence	307.7	3
	Enuresis(Not Due to a General Medical Condition)	307.6	2
	Impulse-Control Disorder NOS	312.30	1
	Neglect of Child	V61.212	2
	Oppositional Defiant Disorder	313.81	18
	Oppositional Defiant Disorder	R/O313.81	2
	Physical Abuse of Adult	V61.13	1
	Physical Abuse of Child	V61.211	1
	Separation Anxiety Disorder	R/O309.21	1
	Separation Anxiety Disorder	309.21	1
	Trichotillomania	312.39	2
		<b>Sum</b>	<b>73</b>
Cognitive/Organic	Borderline Intellectual Functioning	R/OV62.89	3
	Borderline Intellectual Functioning	V62.89	9
	Cognitive Disorder NOS	294.9	1
	Cognitive Disorder NOS	R/O294.9	1
	Learning Disorder Not Otherwise Specified	315.9	6
	Learning Disorder Not Otherwise Specified	R/O315.9	3
	Mental Retardation, Severity Unspecified,	319	2
	Mild Mental Retardation	317	3
	Mild Mental Retardation	R/O317	3
	Moderate Mental Retardation	318.0	2
	Moderate Mental Retardation	R/O318.0	1
	Mood Disorder Due to a General Medical Condition	293.83	1
	Phonological Disorder	315.39	2
	Reading Disorder	315.00	1
	Severe Mental Retardation	318.1	1

# Scioto County

## Program Summary Statistics

04-08-2005

			Sum	39
Mood	Bipolar Disorder NOS	R/O296.80		1
	Bipolar Disorder NOS	296.80		3
	Bipolar I Disorder, Most Recent Episode Depressed Moderate	R/O296.52		1
	Bipolar I Disorder, Most Recent Episode Unspecified	296.7		1
	Depressive Disorder NOS	R/O311		6
	Depressive Disorder NOS	311.		3
	Depressive Disorder NOS	311		19
	Dysthymic Disorder	300.4		7
	Major Depressive Disorder, Recurrent Mild	R/O296.31		2
	Major Depressive Disorder, Recurrent Mild	296.31		1
	Major Depressive Disorder, Recurrent Moderate	296.32		6
	Major Depressive Disorder, Recurrent Severe Without Psychotic Features	296.33		3
	Major Depressive Disorder, Single Episode Moderate	296.22		1
	Mood Disorder NOS	296.90		4
	Mood Disorder NOS	R/O296.90		2
				<b>Sum</b>
Other V-Codes	Academic Problem	V62.3		2
	Bereavement	V62.82		2
	Diagnosis Deferred on Axis II	R/O799.92		4
	Diagnosis Deferred on Axis II	799.92		10
	Neglect of Child(focus of attention is on victim)	995.53		8
	No Diagnosis on Axis II	R/OV71.092		25
	No Diagnosis on Axis II	V71.092		68
	No Diagnosis or Condition on Axis I	V71.091		6
	No Diagnosis or Condition on Axis I	R/OV71.091		1
	Parent-Child Relational Problem	R/OV61.20		5
	Parent-Child Relational Problem	V61.20		10
	Partner Relational Problem	V61.11		13
	Partner Relational Problem	R/OV61.11		1
	Phase of Life Problem	V62.892		1
	Physical Abuse of Adult(attention focus on victim)	995.811		7
	Physical Abuse of Child(attention focus on victim)	R/O995.52		1
	Physical Abuse of Child(attention focus on victim)	995.52		13
	Relational Problem NOS	R/OV62.81		1
	Relational Problem NOS	V62.81		5
	Sexual Abuse of Adult (attention focus on victim)	995.81		2
	Sexual Abuse of Child (attention focus on victim)	R/O995.51		2

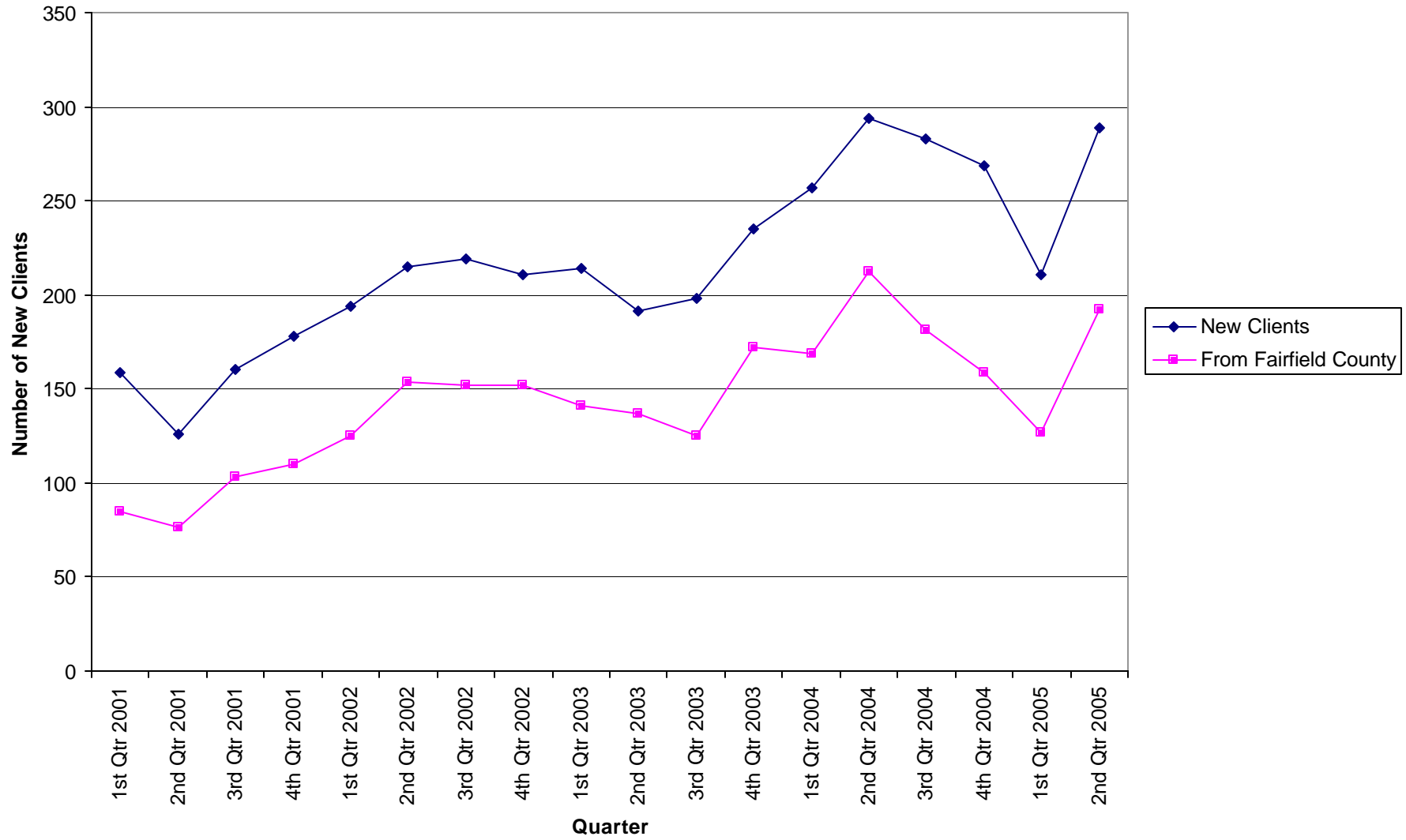
# Scioto County

## Program Summary Statistics

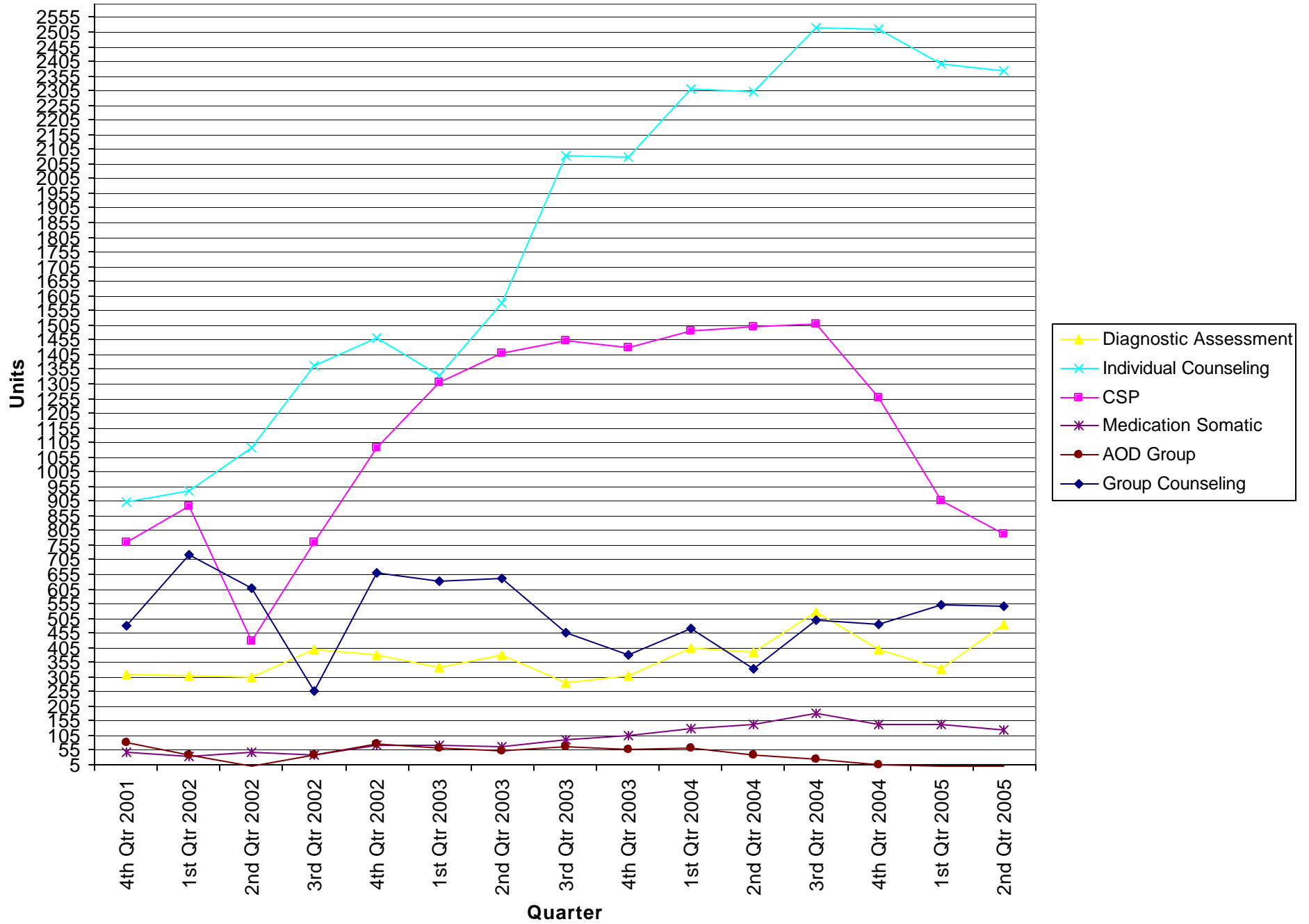
04-08-2005

	Sexual Abuse of Child (attention focus on victim)	995.51	24
	Sibling Relational Problem	V61.8	2
			<b>Sum</b> 213
Paraphilias	Paraphilia NOS	302.9	2
	Pedophilia	302.2	1
	Pedophilia	R/O302.2	1
	Sexual Abuse of Adult	V61.12	2
	Sexual Abuse of Child	R/OV61.21	1
	Sexual Abuse of Child	V61.21	8
			<b>Sum</b> 15
Personality	Antisocial Personality Disorder	301.7	2
	Avoidant Personality Disorder	301.82	1
	Borderline Personality Disorder	R/O301.83	1
	Borderline Personality Disorder	301.83	2
	Dependent Personality Disorder	R/O301.6	1
	Personality Disorder NOS	301.9	7
	Personality Disorder NOS	R/O301.9	8
			<b>Sum</b> 22
Psychosis	Psychotic Disorder NOS	R/O298.9	1
	Schizophrenia Paranoid Type	295.30	1
			<b>Sum</b> 2
Substance Use	Alcohol Abuse	R/O305.00	1
	Alcohol Abuse	305.00	4
	Alcohol Dependence	303.90	6
	Amphetamine (or Amphetamine-Like) Dependence	304.40	1
	Cannabis Abuse	305.20	4
	Cannabis Dependence	304.30	4
	Cocaine Dependence	304.20	1
	Polysubstance Dependence	304.80	5
	Polysubstance Dependence	R/O304.80	2
	Sedative, Hypnotic, or Anxiolytic Dependence	304.10	1
			<b>Sum</b> 29

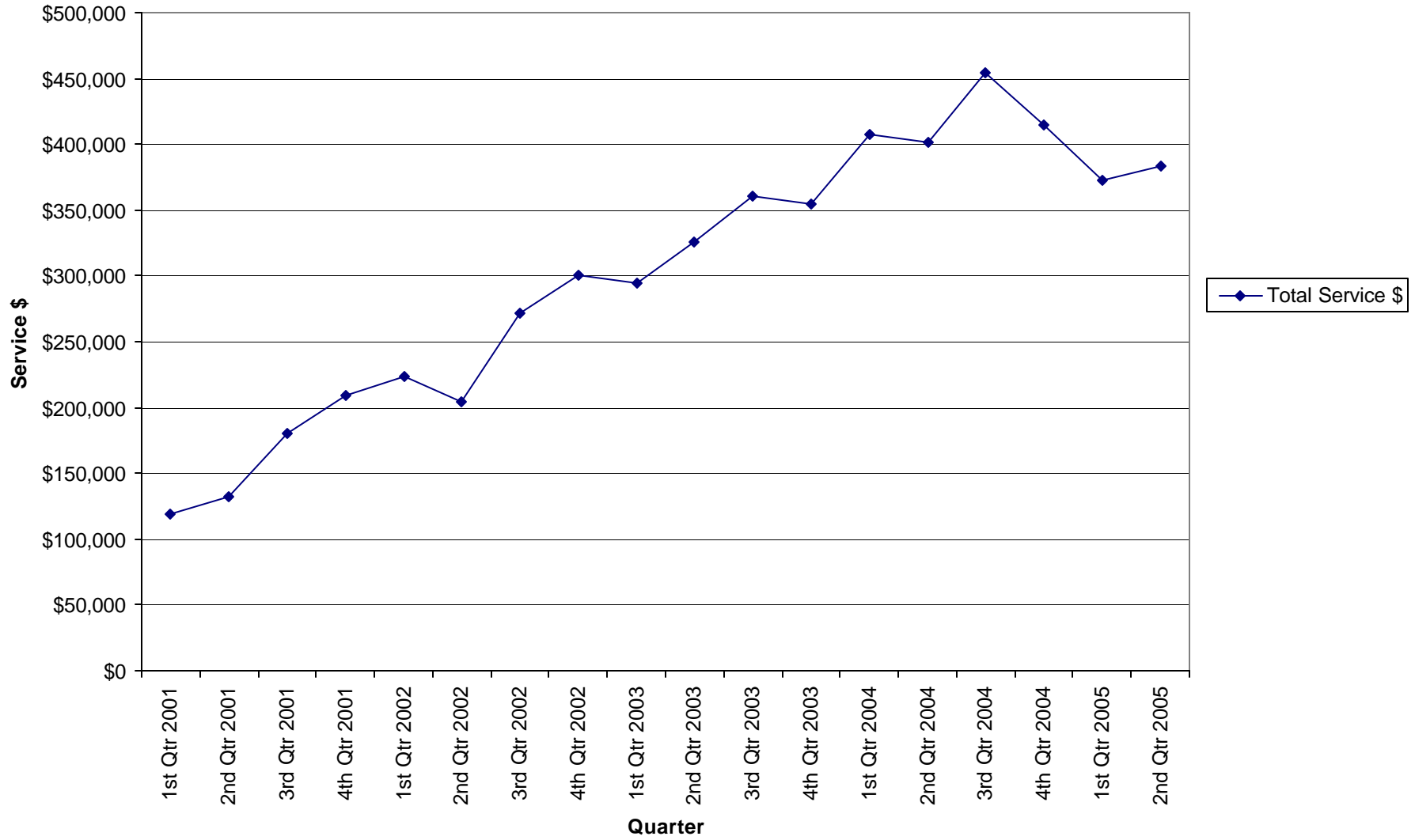
# New Clients



Quarterly Units of Service



### Total Quarterly \$'s of Service



### Quarterly Compliance Review

