

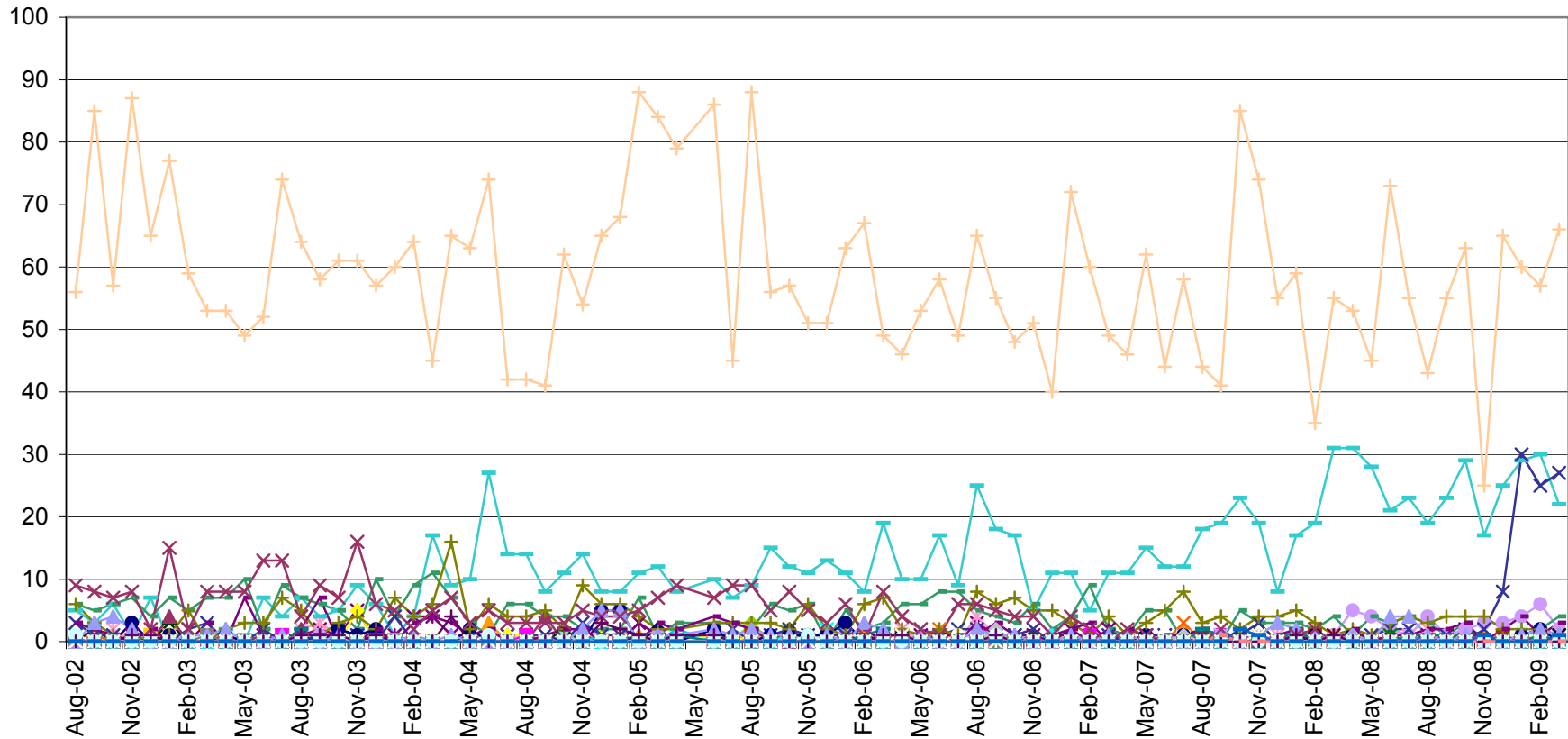
MARCH 2009

UTILIZATION REVIEW

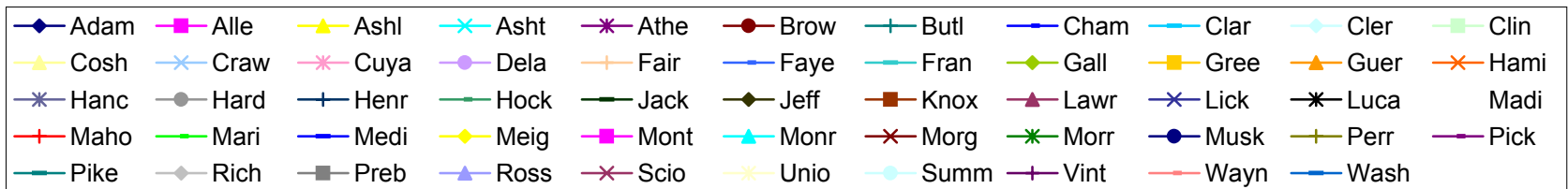
Clinician	Number of Clients Assigned	Number of Clients Seen	Number of Services Rendered	Average Number of Contacts Per Client Seen
Dean Bachelor, M.Div.	21	15	49	3.27
Kimberly Blair, M.A., PC	75	35	118	3.37
Misty Coleman, MSW, LISW	96	41	91	2.22
Janet Crabtree, BA, CT	17	18	79	4.39
Scott Craft, Ph.D.	56	29	96	3.31
Rachel Cranmer, MA, PC	54	27	70	2.59
Jennifer DiBlasio, MA	123	51	103	2.02
Daniel DiSalvo, CNP	20	12	12	1.00
Joe Dunson, M.Ed., PC	142	56	91	1.63
Will Froilan, MA	55	33	55	1.72
Helka Gienapp, B.A.	54	19	67	3.53
Dan Goodwin, BA, LSW	14	23	91	3.96
Jodie Grafmiller, BA	7	4	14	3.50
Joni Grim, Ph.D., PCC	68	24	48	2.00
Brad Hedges, Ph.D., PCC	53	10	12	1.20
Stacy Ingraham, BA	114	51	85	1.67
Emily Joseph, BA	64	28	74	2.64
Amanda Martin, M.Ed. PC	71	34	131	3.85
Amynda Martin, PsyD	74	14	29	2.07
Jessica Mitchell, MA, PC	114	20	42	2.10
Tricia Ostrander, Ph.D.	104	33	64	1.94
Robin Rippeth Ph.D., PCC	57	7	10	1.43
Kelly Roberts, MA	47	24	49	2.04
Claire Robitaille, M.S., LSW	75	38	74	1.95
Allisha Rone, BA	13	13	28	2.15
Jennifer Schwind, M.A.	132	40	97	2.43
Mike Selegue, MSW, LISW	128	59	96	1.63
Samantha Skoczylas, MA	61	32	70	2.19
Sonya Slater, PsyD	31	15	43	2.87
Sheridan Smith, M.D.	80	94	102	1.09
Heather Stevens, MSW, LSW	75	45	131	2.91
Cara Sussman, B.A.	35	16	31	1.94
Caleb Tipple, B.S.	13	31	104	3.35
Miranda Zircher, MS, PC	112	32	94	2.94
Average	68.33	31.00	71.21	2.51

The No Show rate for March was 19%. When considering both the no show rate and the cancellation rate, this figure is 34%.

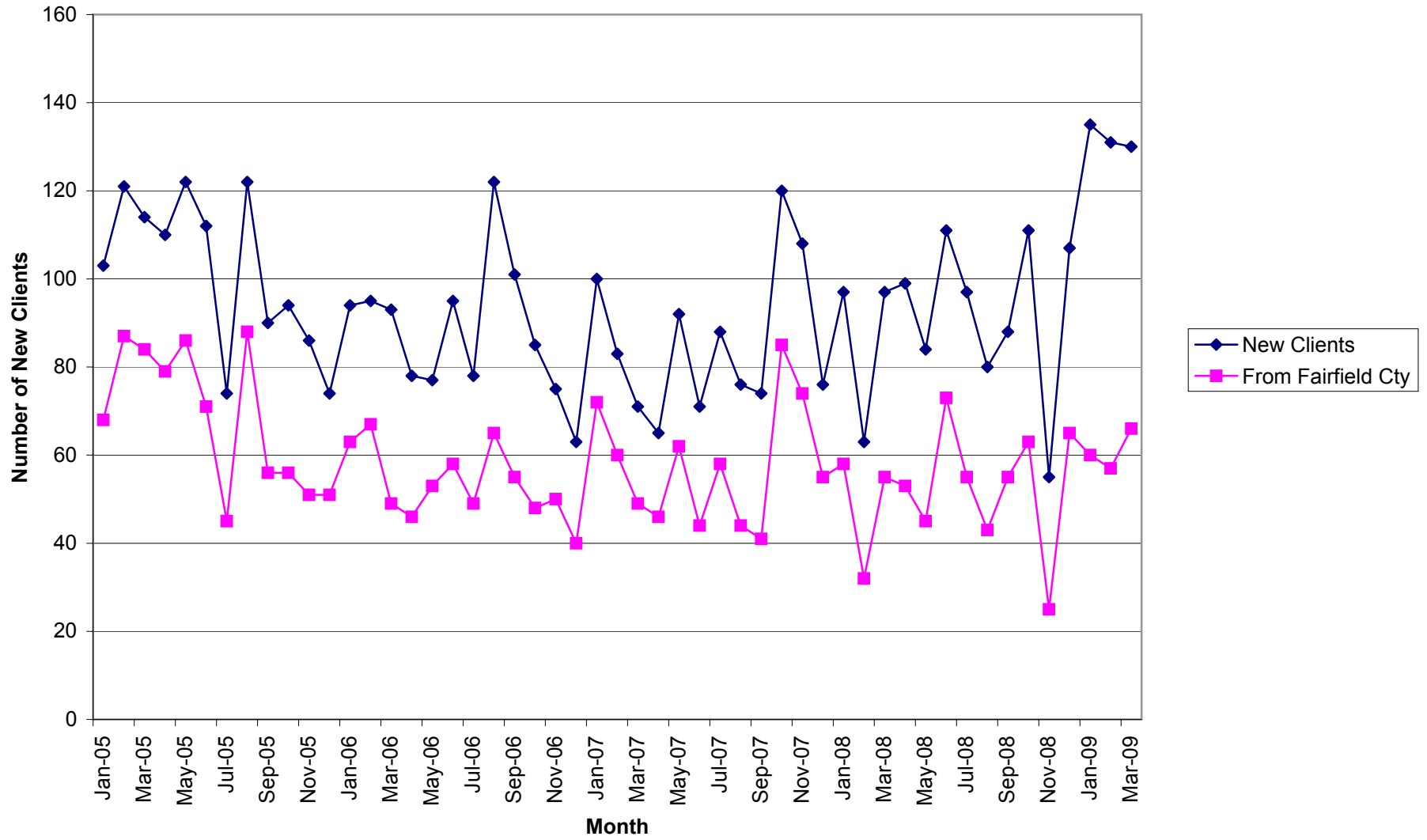
Number of Intakes by County



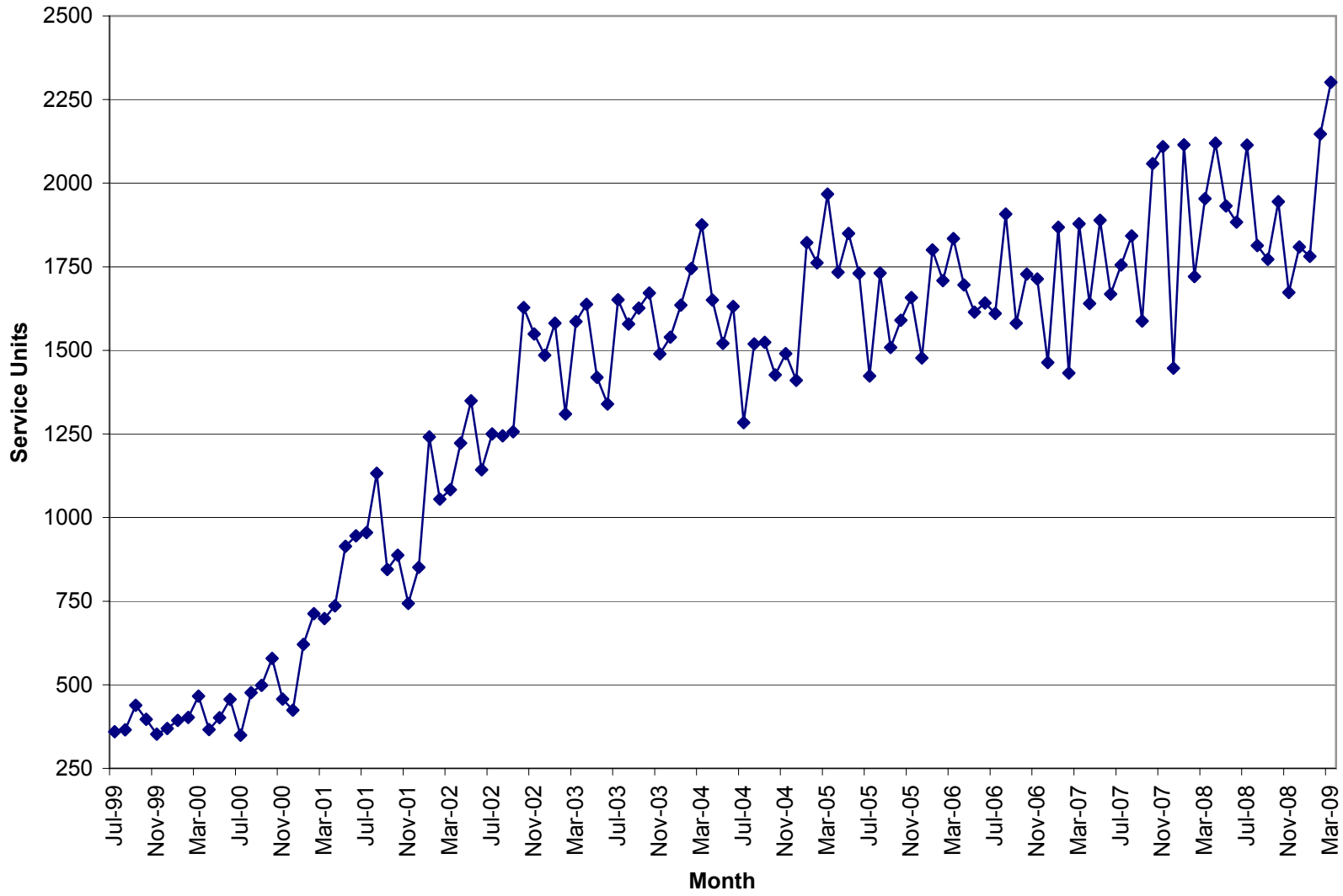
Prior to 9/05 the numbers reported were somewhat inflated due to a report issue that has been corrected.



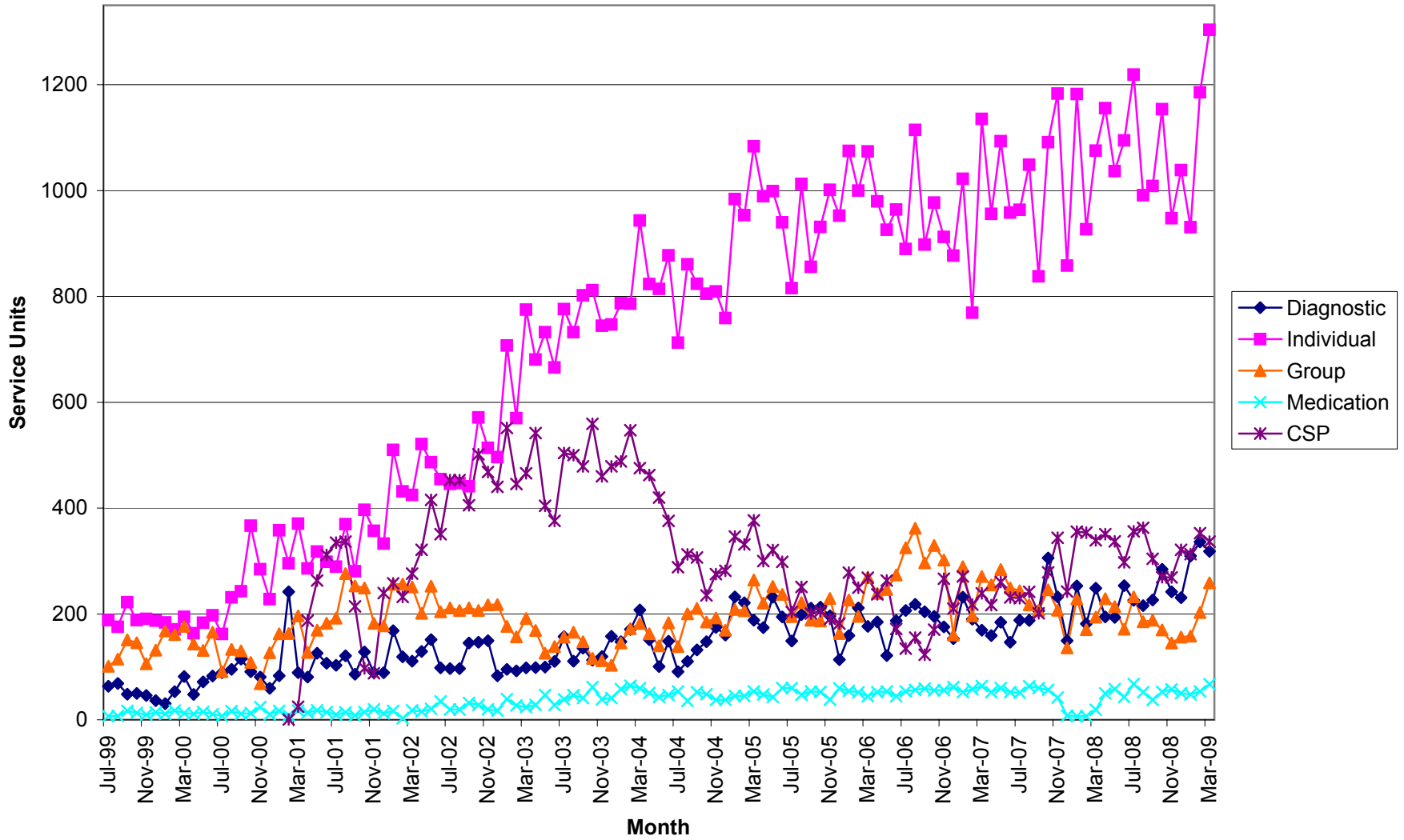
New Clients



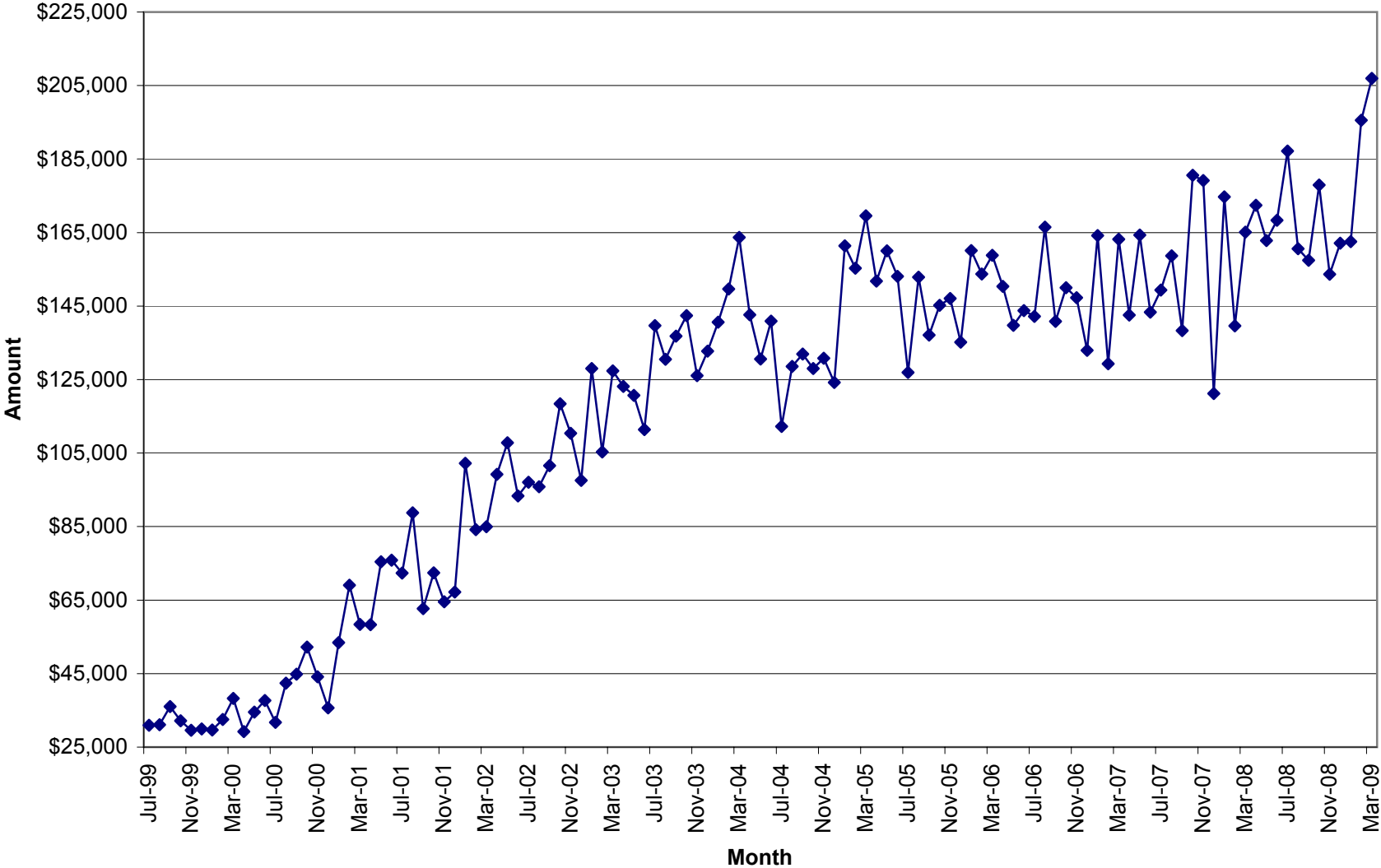
Total Units of Service



Units of Service



Total Units \$



March 2009

Unit Production & Scheduling Proficiency by Clinician
Mid Ohio Psychological Services

	Cancellations	Missed	Diagnostics	Evaluations	AOD Assessments	Individual	Group	Community Support	Medication	Other Units	Total Units	Billable Units	Units Billed+ Missed	Schedule Proficiency	% Canceled	% Missed	Lost Units due to C & M	% of Total Billable Units
Unit Rate			129.99	129.99	96.24	90	39.48	65	195	35								
Dean Bachelor	3	8	2.00	0.00	0.00	9.00	72.00	0.00	0.0		94.00	83.00	91.00	91%	3%	9%	12%	3.61%
Kimberly Blair	14	10	0.00	8.50	0.00	78.50	0.00	19.30	0.0		130.30	106.30	116.30	82%	11%	8%	18%	4.62%
Misty Coleman	39	31	17.50	0.00	0.00	60.50	0.00	5.60	0.0		153.60	83.60	114.60	54%	25%	20%	46%	3.63%
Janet Crabtree	0	0	0.00	0.00	0.00	0.00	0.00	80.90	0.0		80.90	80.90	80.90					3.51%
Scott Craft	7	15	1.00	0.00	0.00	39.80	66.50	5.00	0.0	4.0	138.30	116.30	131.30	84%	5%	11%	16%	5.05%
Rachel Cramner	25	14	11.60	0.00	0.00	55.00	0.00	5.90	0.0		111.50	72.50	86.50	65%	22%	13%	35%	3.15%
Jennifer DiBlasio	62	44	8.50	0.00	0.00	56.20	19.80	4.30	0.0		194.80	88.80	132.80	46%	32%	23%	54%	3.86%
Daniel DiSalvo	2	8	0.00	0.00	0.00	0.00	0.00	0.00	7.0		17.00	7.00	15.00	41%	12%	47%	59%	0.30%
Joe Dunson	16	39	28.00	0.00	0.00	70.50	0.00	4.50	0.0		158.00	103.00	142.00	65%	10%	25%	35%	4.47%
Will Froilan	18	28	35.30	0.00	0.00	26.40	0.00	0.90	0.0		108.60	62.60	90.60	58%	17%	26%	42%	2.72%
Helka Gienapp	14	16	3.30	0.00	0.00	32.90	28.00	6.10	0.0		100.30	70.30	86.30	70%	14%	16%	30%	3.05%
Dan Goodwin*	0	0	0.00	0.00	0.00	0.00	0.00	72.90	0.0		72.90	72.90	72.90					3.17%
Joni Grim	12	9	7.90	0.00	0.00	36.20	5.90	1.20	0.0		72.20	51.20	60.20	71%	17%	12%	29%	2.22%
Jodi Grafmiller	9	2	0.00	0.00	0.00	12.40	0.00	0.50	0.0		23.90	12.90	14.90	54%	38%	8%	46%	0.56%
Brad Hedges	0	0	0.00	12.50	0.00	1.50	0.00	0.00	0.0		14.00	14.00	14.00	100%	0%	0%	0%	0.61%
Stacy Ingraham	22	26	20.30	0.00	0.00	63.00	0.00	3.80	0.0		135.10	87.10	113.10	64%	16%	19%	36%	3.78%
Emily Joseph	13	21	14.40	0.00	0.00	53.60	0.00	3.00	0.0		105.00	71.00	92.00	68%	12%	20%	32%	3.08%
Amanda Martin	32	24	2.00	0.50	0.00	98.70	0.00	17.00	0.0		174.20	118.20	142.20	68%	18%	14%	32%	5.14%
Amynda Martin	1	4	6.30	0.00	0.00	10.10	0.00	0.60	0.0	13.1	35.10	30.10	34.10	86%	3%	11%	14%	1.31%
Jessica Mitchell	16	16	13.10	0.00	0.00	28.00	0.00	2.90	0.0		76.00	44.00	60.00	58%	21%	21%	42%	1.91%
Tricia Ostrander	13	18	12.30	0.00	0.00	55.00	0.00	2.00	0.0		100.30	69.30	87.30	69%	13%	18%	31%	3.01%
Robin Rippeth	6	5	5.60	8.40	0.00	1.60	0.00	0.30	0.0		26.90	15.90	20.90	59%	22%	19%	41%	0.69%
Kelly Roberts	15	18	12.80	0.00	0.00	37.30	0.00	1.70	0.0		84.80	51.80	69.80	61%	18%	21%	39%	2.25%
Claire Robitaille	26	20	15.00	0.00	0.00	62.40	0.00	2.40	0.0		125.80	79.80	99.80	63%	21%	16%	37%	3.47%
Allisha Rone	8	9	0.00	0.00	0.00	23.80	0.00	0.00	0.0		40.80	23.80	32.80	58%	20%	22%	42%	1.03%
Jennifer Schwind	14	43	10.30	0.00	0.00	79.90	0.00	2.00	0.0		149.20	92.20	135.20	62%	9%	29%	38%	4.01%
Mike Selegue	30	49	20.00	0.00	0.00	71.00	0.00	0.80	0.0		170.80	91.80	140.80	54%	18%	29%	46%	3.99%
Samantha Skoczylas	9	40	13.70	1.00	0.00	31.40	32.50	1.20	0.0		128.80	79.80	119.80	62%	7%	31%	38%	3.47%
Sonya Slater	1	9	7.00	3.80	0.00	24.90	0.00	5.50	0.0		51.20	41.20	50.20	80%	2%	18%	20%	1.79%
Sheridan Smith	18	25	0.00	0.00	0.00	0.00	0.00	0.00	60.1		103.10	60.10	85.10	58%	17%	24%	42%	2.61%
Heather Stevens	33	33	9.80	0.00	0.00	82.00	34.00	6.70	0.0		198.50	132.50	165.50	67%	17%	17%	33%	5.76%
Cara Sussman	15.00	11.00	0.00	0.00	0.00	34.80	0.00	0.00	0.00		60.8	34.80	45.80	57%	25%	18%	43%	1.51%
Caleb Tipple	0.00	0.00	0.00	0.00	0.00	0.00	0.00	75.60	0.00		75.6	75.60	75.60					3.28%
Miranda Zircher	32	19	5.90	0.00	0.00	67.40	0.00	4.10	0.0		128.40	77.40	96.40	60%	25%	15%	40%	3.36%
Sum Totals	525.00	614.00	283.60	34.70	0.00	1303.80	258.70	336.70	67.10	17.10	3440.70	2301.70	2915.70					
Average														66%	15%	19%	34%	2.93%

* These clinicians do not have a daily scheduler therefore their totals are not reported in the missed or cancelled sessions.

% of Agency \$ Billed by Clinician

March	2009								Tot Units	% of Tot
	DA	Eval	AOD	IND	Group	CSP	MED	Other		
Unit Rate	\$ 129.99	\$ 129.99	\$ 96.24	\$ 90	\$ 39.48	\$ 65	\$ 195	\$ 35		
Dean Bachelor	2.00	0.00	0.00	9.00	72.00	0.00	0.00	0.00		
	\$260	\$0	\$0	\$810	\$2,843	\$0	\$0	\$0	\$ 3,912.54	1.92%
Kimberly Blair	0.00	8.50	0.00	78.50	0.00	19.30	0.00	0.00		
	\$0.00	\$1,104.92	\$0.00	\$7,065.00	\$0.00	\$1,254.50	\$0.00	\$0.00	\$ 9,424.42	4.63%
Misty Coleman	17.50	0.00	0.00	60.50	0.00	5.60	0.00	0.00		
	\$2,274.83	\$0.00	\$0.00	\$5,445.00	\$0.00	\$364.00	\$0.00	\$0.00	\$ 8,083.83	3.98%
Janet Crabtree	0.00	0.00	0.00	0.00	0.00	80.90	0.00	0.00		
	\$0.00	\$0.00	\$0.00	\$0.00	\$0.00	\$5,258.50	\$0.00	\$0.00	\$ 5,258.50	2.59%
Scott Craft	1.00	0.00	0.00	39.80	66.50	5.00	0.00	4.00		
	\$129.99	\$0.00	\$0.00	\$3,582.00	\$2,625.42	\$325.00	\$0.00	\$140.00	\$ 6,802.41	3.35%
Rachel Cranmer	11.60	0.00	0.00	55.00	0.00	5.90	0.00	0.00		
	\$1,507.88	\$0.00	\$0.00	\$4,950.00	\$0.00	\$383.50	\$0.00	\$0.00	\$ 6,841.38	3.36%
Jennifer DiBlasio	8.50	0.00	0.00	56.20	19.80	4.30	0.00	0.00		
	\$1,104.92	\$0.00	\$0.00	\$5,058.00	\$781.70	\$279.50	\$0.00	\$0.00	\$ 7,224.12	3.55%
Daniel DiSalvo	0.00	0.00	0.00	0.00	0.00	0.00	7.00	0.00		
	\$0.00	\$0.00	\$0.00	\$0.00	\$0.00	\$0.00	\$1,365.00	\$0.00	\$ 1,365.00	0.67%
Joe Dunson	28.00	0.00	0.00	70.50	0.00	4.50	0.00	0.00		
	\$3,639.72	\$0.00	\$0.00	\$6,345.00	\$0.00	\$292.50	\$0.00	\$0.00	\$ 10,277.22	5.05%
Will Froilan	35.30	0.00	0.00	26.40	0.00	0.90	0.00	0.00		
	\$4,588.65	\$0.00	\$0.00	\$2,376.00	\$0.00	\$58.50	\$0.00	\$0.00	\$ 7,023.15	3.45%
Helka Gienapp	3.30	0.00	0.00	32.90	28.00	6.10	0.00	0.00		
	\$428.97	\$0.00	\$0.00	\$2,961.00	\$1,105.44	\$396.50	\$0.00	\$0.00	\$ 4,891.91	2.41%
Dan Goodwin	0.00	0.00	0.00	0.00	0.00	72.90	0.00	0.00		
	\$0.00	\$0.00	\$0.00	\$0.00	\$0.00	\$4,738.50	\$0.00	\$0.00	\$ 4,738.50	2.33%
Joni Grim	7.90	0.00	0.00	36.20	5.90	1.20	0.00	0.00		
	\$1,026.92	\$0.00	\$0.00	\$3,258.00	\$232.93	\$78.00	\$0.00	\$0.00	\$ 4,595.85	2.26%
Brad Hedges	0.00	12.50	0.00	1.50	0.00	0.00	0.00	0.00		
	\$0.00	\$1,624.88	\$0.00	\$135.00	\$0.00	\$0.00	\$0.00	\$0.00	\$ 1,759.88	0.87%
Stacy Ingraham	20.30	0.00	0.00	63.00	0.00	3.80	0.00	0.00		
	\$2,638.80	\$0.00	\$0.00	\$5,670.00	\$0.00	\$247.00	\$0.00	\$0.00	\$ 8,555.80	4.21%
Emily Joseph	14.40	0.00	0.00	53.60	0.00	3.00	0.00	0.00		
	\$1,871.86	\$0.00	\$0.00	\$4,824.00	\$0.00	\$195.00	\$0.00	\$0.00	\$ 6,890.86	3.39%
Amanda Martin	2.00	0.50	0.00	98.70	0.00	17.00	0.00	0.00		
	259.98	\$65.00	\$0.00	\$8,883.00	\$0.00	\$1,105.00	\$0.00	\$0.00	\$ 10,312.98	5.07%
Amynda Martin	6.30	0.00	0.00	10.10	0.00	0.60	0.00	13.10		
	\$818.94	\$0.00	\$0.00	\$909.00	\$0.00	\$39.00	\$0.00	\$458.50	\$ 2,225.44	1.09%
Jessica Mitchell	13.10	0.00	0.00	28.00	0.00	2.90	0.00	0.00		
	\$1,702.87	\$0.00	\$0.00	\$2,520.00	\$0.00	\$188.50	\$0.00	\$0.00	\$ 4,411.37	2.17%
Tricia Ostrander	12.30	0.00	0.00	55.00	0.00	2.00	0.00	0.00		
	\$1,598.88	\$0.00	\$0.00	\$4,950.00	\$0.00	\$130.00	\$0.00	\$0.00	\$ 6,678.88	3.28%
Robin Rippeth	5.60	8.40	0.00	1.60	0.00	0.30	0.00	0.00		
	\$727.94	\$1,091.92	\$0.00	\$144.00	\$0.00	\$19.50	\$0.00	\$0.00	\$ 1,983.36	0.98%
Kelly Roberts	12.80	0.00	0.00	37.30	0.00	1.70	0.00	0.00		
	\$1,663.87	\$0.00	\$0.00	\$3,357.00	\$0.00	\$110.50	\$0.00	\$0.00	\$ 5,131.37	2.52%
Claire Robitaille	15.00	0.00	0.00	62.40	0.00	2.40	0.00	0.00		
	\$1,949.85	\$0.00	\$0.00	\$5,616.00	\$0.00	\$156.00	\$0.00	\$0.00	\$ 7,721.85	3.80%
Allisha Rone	0.00	0.00	0.00	23.80	0.00	0.00	0.00	0.00		
	\$0.00	\$0.00	\$0.00	\$2,142.00	\$0.00	\$0.00	\$0.00	\$0.00	\$ 2,142.00	1.05%
Jennifer Schwind	10.30	0.00	0.00	79.90	0.00	2.00	0.00	0.00		
	\$1,338.90	\$0.00	\$0.00	\$7,191.00	\$0.00	\$130.00	\$0.00	\$0.00	\$ 8,659.90	4.26%
Mike Selegue	20.00	0.00	0.00	71.00	0.00	0.80	0.00	0.00		
	\$2,599.80	\$0.00	\$0.00	\$6,390.00	\$0.00	\$52.00	\$0.00	\$0.00	\$ 9,041.80	4.45%
Samantha Skoczylas	13.70	1.00	0.00	31.40	32.50	1.20	0.00	0.00		
	\$1,780.86	\$129.99	\$0.00	\$2,826.00	\$1,283.10	\$78.00	\$0.00	\$0.00	\$ 6,097.95	3.00%
Sonya Slater	7.00	3.80	0.00	24.90	0.00	5.50	0.00	0.00		
	\$909.93	\$493.96	\$0.00	\$2,241.00	\$0.00	\$357.50	\$0.00	\$0.00	\$ 4,002.39	1.97%
Sheridan Smith	0.00	0.00	0.00	0.00	0.00	0.00	60.10	0.00		
	\$0.00	\$0.00	\$0.00	\$0.00	\$0.00	\$0.00	\$11,719.50	\$0.00	\$ 11,719.50	5.76%
Heather Stevens	9.80	0.00	0.00	82.00	34.00	6.70	0.00	0.00		
	\$1,273.90	\$0.00	\$0.00	\$7,380.00	\$1,342.32	\$435.50	\$0.00	\$0.00	\$ 10,431.72	5.13%
Cara Sussman	0.00	0.00	0.00	34.80	0.00	0.00	0.00	0.00		
	\$0.00	\$0.00	\$0.00	\$3,132.00	\$0.00	\$0.00	\$0.00	\$0.00	\$ 3,132.00	1.54%
Caleb Tipple	0.00	0.00	0.00	0.00	0.00	75.60	0.00	0.00		
	\$0.00	\$0.00	\$0.00	\$0.00	\$0.00	\$4,914.00	\$0.00	\$0.00	\$ 4,914.00	2.42%
Miranda Zircher	5.90	0.00	0.00	67.40	0.00	4.10	0.00	0.00		
	\$766.94	\$0.00	\$0.00	\$6,066.00	\$0.00	\$266.50	\$0.00	\$0.00	\$ 7,099.44	3.49%
Sum Totals	\$36,865.16	\$4,315.67	\$0.00	\$114,084.00	\$7,915.74	\$16,213.90	\$13,084.50	\$598.50	\$ 203,351.29	

This chart represents the percentage of the total dollars billed by clinician.