

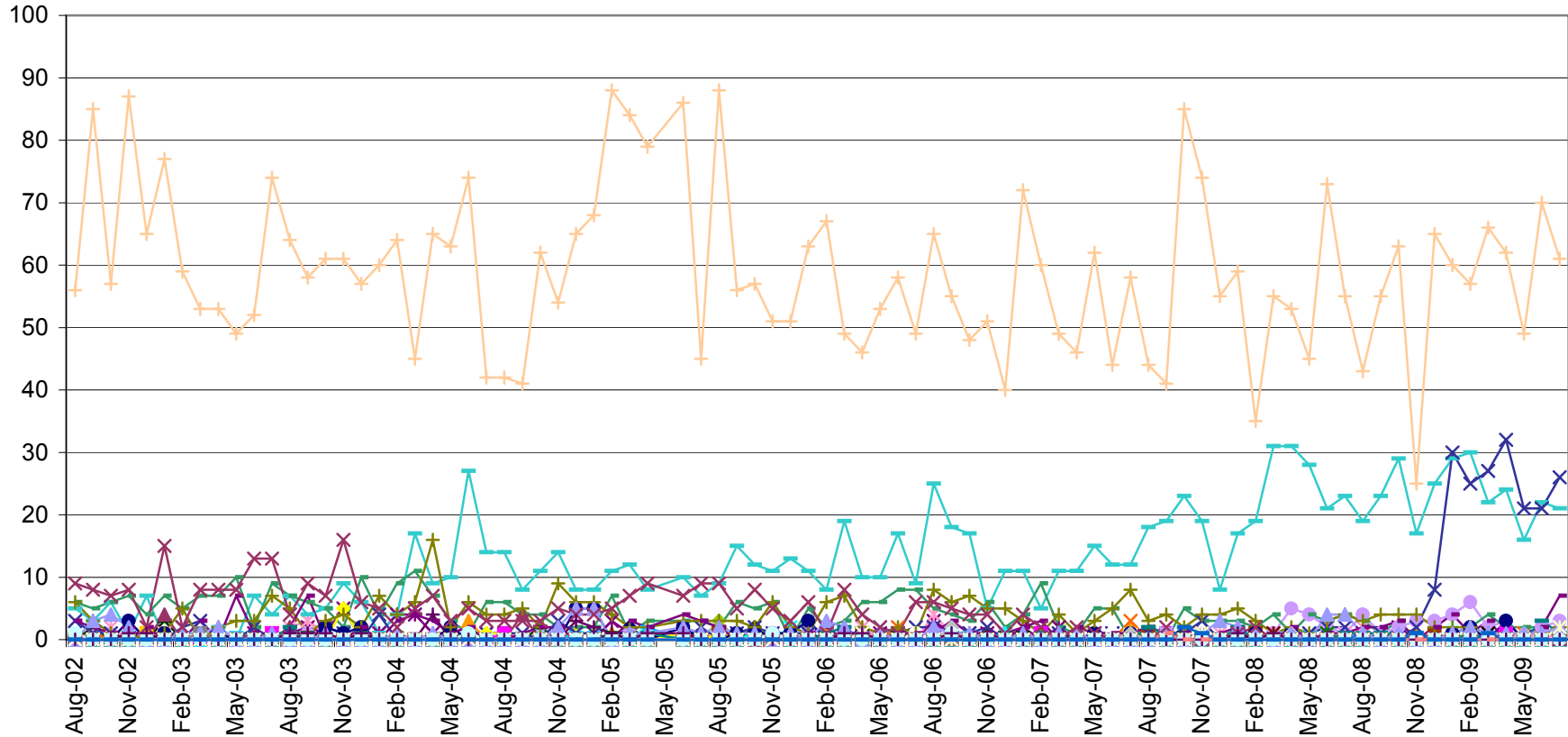
JULY 2009

UTILIZATION REVIEW

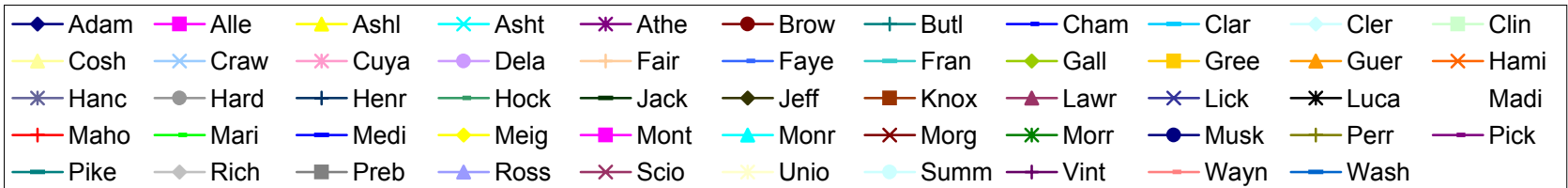
Clinician	Number of Clients Assigned	Number of Clients Seen	Number of Services Rendered	Average Number of Contacts Per Client Seen
Dean Bachelor, M.Div.	21	18	59	3.28
Kimberly Blair, M.A., PC	75	34	87	2.56
Misty Coleman, MSW, LISW	96	39	98	2.51
Janet Crabtree, BA, CT	15	21	84	4.00
Scott Craft, Ph.D.	56	27	53	1.96
Rachel Cranmer, MA, PC	54	27	57	2.11
Daniel DiSalvo, CNP	20	14	16	1.14
Joe Dunson, M.Ed., PC	142	43	69	1.60
Tricia Foster, Ph.D.	104	36	87	2.42
Will Froilan, MA	55	47	94	2.00
Helka Gienapp, B.A.	54	16	60	3.75
Jodie Grafmiller, BA	36	13	36	2.77
Hope Gray	26	9	11	1.22
Brad Hedges, Ph.D., PCC	53	15	16	1.07
Stacy Ingraham, BA	114	44	82	1.86
Emily Joseph, BA	64	31	76	2.45
Joni Krzycki, Ph.D., PCC	68	22	31	1.41
Amanda Martin, M.Ed. PC	71	36	110	3.06
Amynda Martin, PsyD	74	8	16	2.00
Jessica Mitchell, MA, PC	114	14	19	1.36
Arianna Profato, BA	5	4	6	1.50
Robin Rippeth Ph.D., PCC	57	6	11	1.83
Kelly Roberts, MA	47	17	26	1.53
Claire Robitaille, M.S., LSW	75	30	58	1.93
Allisha Rone, BA	13	37	67	1.81
Jennifer Schwind, M.A.	132	45	78	1.73
Mike Selegue, MSW, LISW	128	59	76	1.29
Ashley Shoemaker	12	1	3	3.00
Samantha Skoczylas, MA	61	36	79	2.19
Sonya Slater, PsyD	31	15	26	1.73
Beth Sleeper	45	42	106	2.52
Sheridan Smith, M.D.	80	70	90	
Sarah Sohar, MA, PC	66	26	56	2.15
Heather Stevens, MSW, LSW	75	39	125	3.21
Cara Sussman, B.A.	35	35	87	1.91
Caleb Tipple, B.S.	26	35	100	2.86
Thomas Vajen	28	25	25	1.00
Miranda Zircher, MS, PC	112	38	116	3.05
Average	62	29	60	2.16

The No Show rate for July was 21%. When considering both the no show rate and the cancellation rate, this figure is 38%.

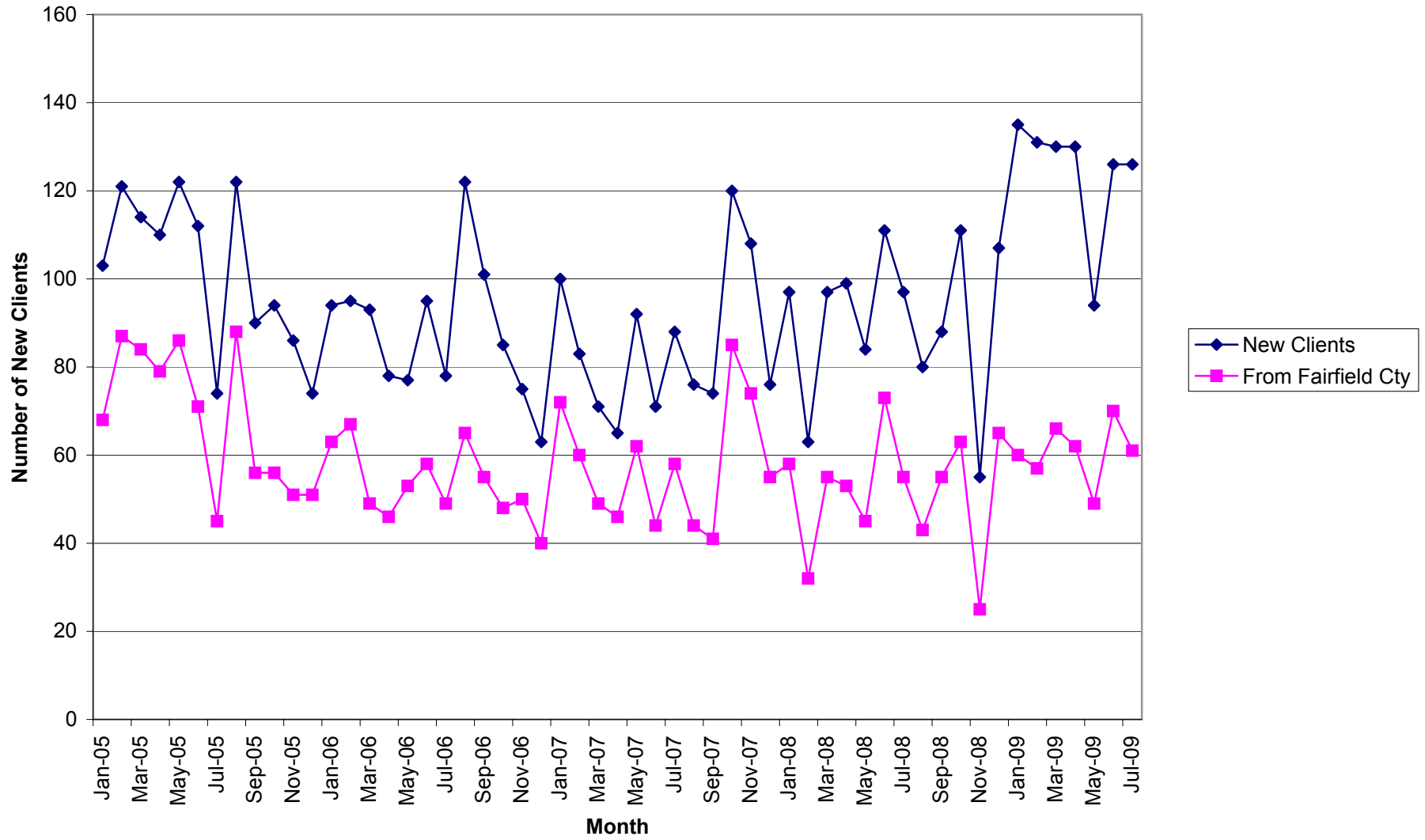
Number of Intakes by County



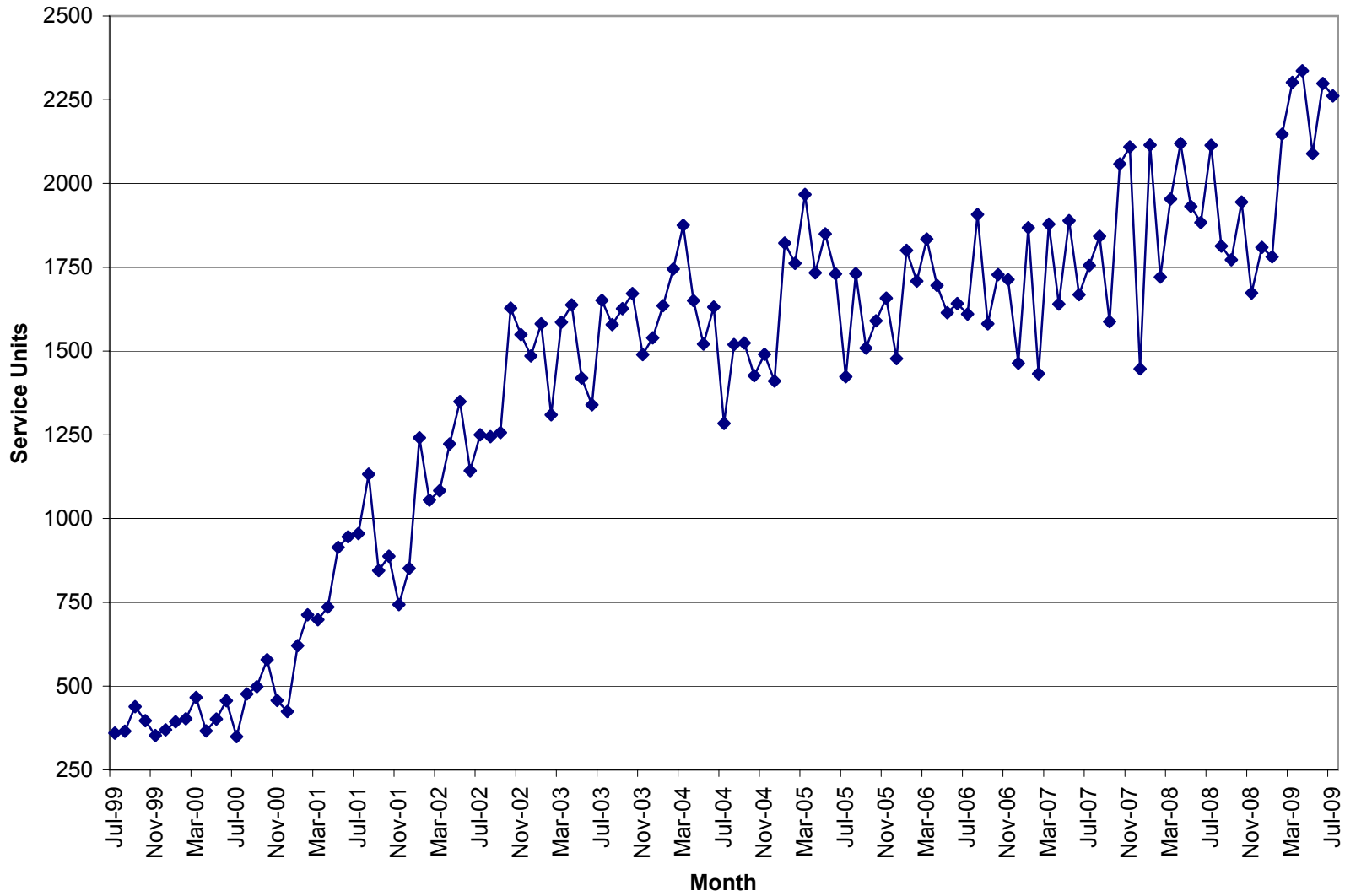
Prior to 9/05 the numbers reported were somewhat inflated due to a report issue that has been corrected.



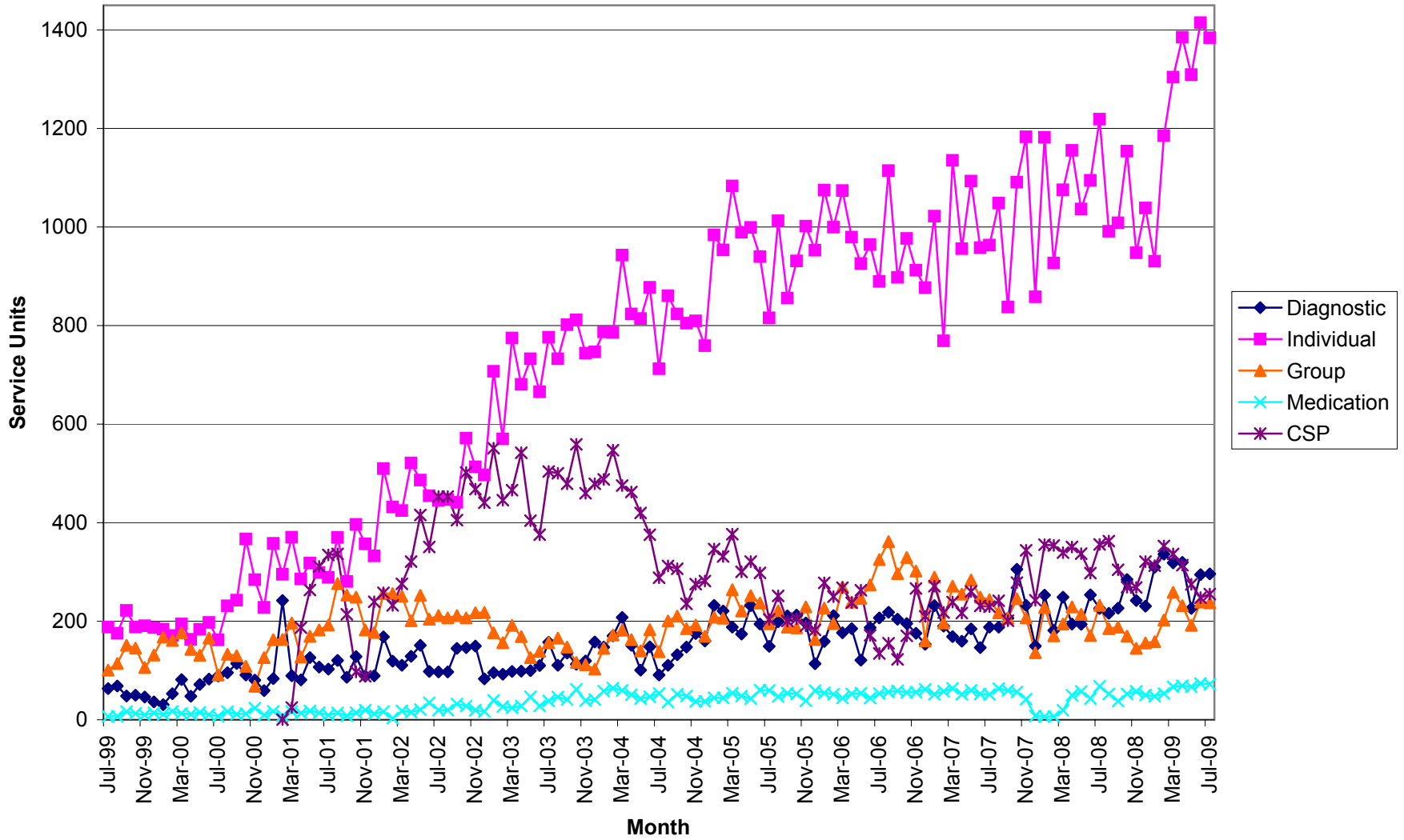
New Clients



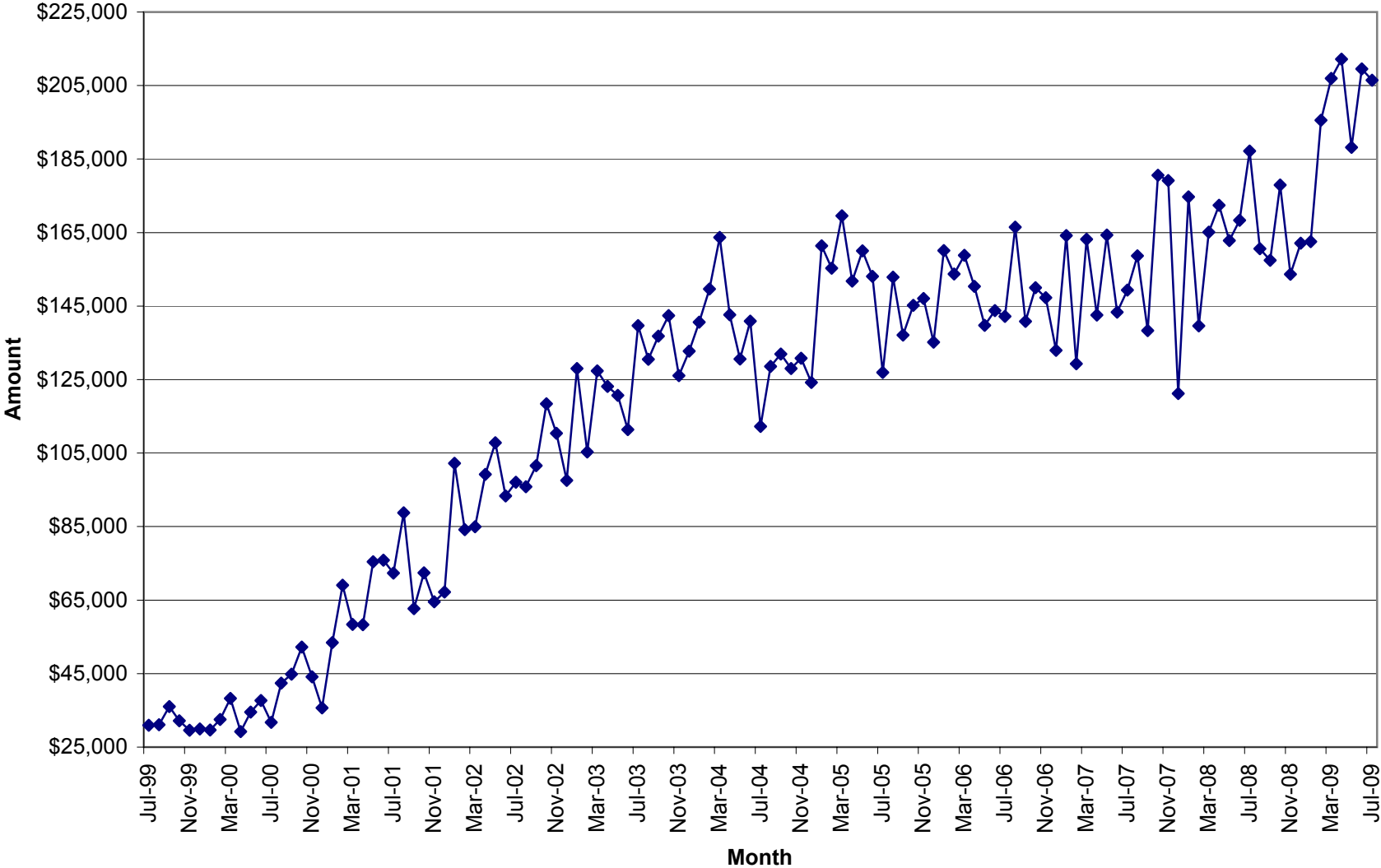
Total Units of Service



Units of Service



Total Units \$



July 2009

Unit Production & Scheduling Proficiency by Clinician
Mid Ohio Psychological Services

	Cancellations	Missed	Diagnostics	Evaluations	AOD Assessments	Individual	Group	Community Support	Medication	Other Units	Total Units	Billable Units	Units Billed+ Missed	Schedule Proficiency	% Canceled	% Missed	Lost Units due to C & M	% of Total Billable Units	High Scheduling Proficiency	Significantly Low Scheduling Proficiency
Unit Rate			129.99	129.99	96.24	90	39.48	65	195	35										
Dean Bachelor	3	8	0.00	0.00	0.00	11.00	96.00	0.00	0.0		118.00	107.00	115.00	93%	3%	7%	9%	4.73%	Yes	No
Kimberly Blair	11	11	4.00	17.30	0.00	62.60	0.00	9.90	0.0		115.80	93.80	104.80	81%	9%	9%	19%	4.15%	Yes	No
Misty Coleman	35	26	19.50	0.00	0.00	80.50	0.00	3.90	0.0		164.90	103.90	129.90	63%	21%	16%	37%	4.59%	No	No
Janet Crabtree	0	0	0.00	0.00	0.00	0.00	0.00	88.50	0.0		88.50	88.50	88.50					3.91%		
Scott Craft	8	17	3.00	0.00	0.00	30.00	4.00	1.20	0.0	4.0	67.20	42.20	59.20	63%	12%	25%	37%	1.87%	No	No
Rachel Cramner	20	16	4.40	0.00	0.00	43.90	0.00	2.90	0.0		87.20	51.20	67.20	59%	23%	18%	41%	2.26%	No	No
Daniel DiSalvo	0	9	0.00	0.00	0.00	0.00	0.00	0.00	6.8		15.80	6.80	15.80	43%	0%	57%	57%	0.30%	No	Yes
Joe Dunson	24	30	24.00	0.00	0.00	53.60	0.00	0.30	0.0		131.90	77.90	107.90	59%	18%	23%	41%	3.44%	No	No
Tricia Foster	13	19	11.70	0.00	0.00	77.30	0.00	1.30	0.0		122.30	90.30	109.30	74%	11%	16%	26%	3.99%	No	No
Will Froilan	24	25	20.70	0.00	0.00	75.90	0.00	0.90	0.0		146.50	97.50	122.50	67%	16%	17%	33%	4.31%	No	No
Helka Gienapp	11	10	1.80	0.00	0.00	37.10	28.00	3.10	0.0		91.00	70.00	80.00	77%	12%	11%	23%	3.10%	No	No
Jodi Grafmiller	16	10	0.00	0.00	0.00	32.40	0.00	2.00	0.0		60.40	34.40	44.40	57%	26%	17%	43%	1.52%	No	No
Hope Gray	1	5	0.00	0.00	0.00	10.50	0.00	0.00	0.0		16.50	10.50	15.50	64%	6%	30%	36%	0.46%	No	No
Brad Hedges	5	1	0.00	11.80	0.00	2.80	0.00	0.00	0.0		20.60	14.60	15.60	71%	24%	5%	29%	0.65%	No	No
Stacy Ingraham	21	43	6.00	0.00	0.00	66.40	0.00	3.20	0.0		139.60	75.60	118.60	54%	15%	31%	46%	3.34%	No	Yes
Emily Joseph	15	21	11.20	0.00	0.00	56.00	0.00	2.80	0.0		106.00	70.00	91.00	66%	14%	20%	34%	3.10%	No	No
Joni Krzycki	7	18	8.60	0.00	0.00	22.40	0.00	0.70	0.0		56.70	31.70	49.70	56%	12%	32%	44%	1.40%	No	No
Amanda Martin	17	12	1.50	0.00	0.00	89.90	0.00	10.70	0.0		131.10	102.10	114.10	78%	13%	9%	22%	4.51%	No	No
Amynda Martin	2	2	2.50	0.00	0.00	5.70	0.00	0.00	0.0	6.0	18.20	14.20	16.20	78%	11%	11%	22%	0.63%	No	No
Jessica Mitchell	20	4	3.00	0.00	0.00	18.30	0.00	0.00	0.0		45.30	21.30	25.30	47%	44%	9%	53%	0.94%	No	Yes
Arianna Profato	3	4	0.00	0.00	0.00	4.00	0.00	0.50	0.0		11.50	4.50	8.50	39%	26%	35%	61%	0.20%	No	Yes
Robin Rippeth	6	7	2.00	6.50	0.00	2.00	0.00	2.00	0.0		25.50	12.50	19.50	49%	24%	27%	51%	0.55%	No	Yes
Kelly Roberts	5	13	2.00	0.00	0.00	22.80	0.00	0.50	0.0		43.30	25.30	38.30	58%	12%	30%	42%	1.12%	No	No
Claire Robitaille	13	22	13.40	0.00	0.00	42.10	0.00	2.40	0.0		92.90	57.90	79.90	62%	14%	24%	38%	2.56%	No	No
Allisha Rone	19	20	0.00	0.00	0.00	58.90	0.00	0.50	0.0		98.40	59.40	79.40	60%	19%	20%	40%	2.63%	No	No
Jennifer Schwind	16	28	11.40	0.00	0.00	52.20	0.00	3.40	0.0		111.00	67.00	95.00	60%	14%	25%	40%	2.96%	No	No
Mike Selegue	29	42	7.00	0.00	0.00	57.00	7.60	0.50	0.0		143.10	72.10	114.10	50%	20%	29%	50%	3.19%	No	Yes
Ashley Shoemaker	1	1	0.00	0.00	0.00	2.20	0.00	0.40	0.0		4.60	2.60	3.60	57%	22%	22%	43%	0.11%	No	No
Samantha Skoczylas	20	28	17.40	1.30	0.00	36.50	22.50	1.40	0.0		127.10	79.10	107.10	62%	16%	22%	38%	3.50%	No	No
Sonya Slater	12	8	3.90	8.00	0.00	15.90	0.00	1.50	0.0		49.30	29.30	37.30	59%	24%	16%	41%	1.30%	No	No
Beth Sleeper	23	62	8.80	0.00	0.00	74.20	8.00	5.40	0.0		181.40	96.40	158.40	53%	13%	34%	47%	4.26%	No	Yes
Sheridan Smith	38	19	0.00	0.00	0.00	0.00	0.00	0.00	53.3		110.30	53.30	72.30	48%	34%	17%	52%	2.36%	No	Yes
Sarah Sohar	7	23	45.30	0.00	0.00	25.60	0.00	0.80	0.0		101.70	71.70	94.70	71%	7%	23%	29%	3.17%	No	No
Heather Stevens	28	36	9.00	0.00	0.00	67.60	47.30	7.70	0.0		195.60	131.60	167.60	67%	14%	18%	33%	5.82%	No	No
Cara Sussman	14.00	17.00	9.00	0.00	0.00	71.60	0.00	5.10	0.00		116.7	85.70	102.70	73%	12%	15%	27%	3.79%	No	No
Caleb Tipple	0.00	0.00	0.00	0.00	0.00	0.00	0.00	85.40	0.00		85.4	85.40	85.40					3.78%		
Thomas Vajen	6.00	5.00	0.00	0.00	0.00	0.00	0.00	0.00	11.90		22.9	11.90	16.90	52%	26%	22%	48%	0.53%	No	Yes
Miranda Zircher	18	27	7.50	0.00	0.00	74.90	24.00	6.00	0.0		157.40	112.40	139.40	71%	11%	17%	29%	4.97%	No	No
Sum Totals	511.00	649.00	258.60	44.90	0.00	1383.80	237.40	254.90	72.00	10.00	3421.60	2261.60	2910.60							
Average														62%	17%	21%	38%	2.63%		

* These clinicians do not have a daily scheduler therefore their totals are not reported in the missed or cancelled sessions.

% of Agency \$ Billed by Clinician

July	2009								Tot Units	% of Tot
	DA	EVAL	AOD	IND	Group	CSP	MED	Other		
Unit Rate	\$ 129.99	\$ 129.99	\$ 96.24	\$ 90	\$ 39.48	\$ 65	\$ 195	\$ 35		
Dean Bachelor	0.00	0.00	0.00	11.00	96.00	0.00	0.00	0.00		
	\$0	\$0	\$0	\$990	\$3,790	\$0	\$0	\$0	\$ 4,780.08	2.35%
Kimberly Blair	4.00	17.30	0.00	62.60	0.00	9.90	0.00	0.00		
	\$519.96	\$2,248.83	\$0.00	\$5,634.00	\$0.00	\$643.50	\$0.00	\$0.00	\$ 9,046.29	4.45%
Misty Coleman	19.50	0.00	0.00	80.50	0.00	3.90	0.00	0.00		
	\$2,534.81	\$0.00	\$0.00	\$7,245.00	\$0.00	\$253.50	\$0.00	\$0.00	\$ 10,033.31	4.94%
Janet Crabtree	0.00	0.00	0.00	0.00	0.00	88.50	0.00	0.00		
	\$0.00	\$0.00	\$0.00	\$0.00	\$0.00	\$5,752.50	\$0.00	\$0.00	\$ 5,752.50	2.83%
Scott Craft	3.00	0.00	0.00	30.00	4.00	1.20	0.00	4.00		
	\$389.97	\$0.00	\$0.00	\$2,700.00	\$157.92	\$78.00	\$0.00	\$140.00	\$ 3,465.89	1.71%
Rachel Cranmer	4.40	0.00	0.00	43.90	0.00	2.90	0.00	0.00		
	\$571.96	\$0.00	\$0.00	\$3,951.00	\$0.00	\$188.50	\$0.00	\$0.00	\$ 4,711.46	2.32%
Daniel DiSalvo	0.00	0.00	0.00	0.00	0.00	0.00	6.80	0.00		
	\$0.00	\$0.00	\$0.00	\$0.00	\$0.00	\$0.00	\$1,326.00	\$0.00	\$ 1,326.00	0.65%
Joe Dunson	24.00	0.00	0.00	53.60	0.00	0.30	0.00	0.00		
	\$3,119.76	\$0.00	\$0.00	\$4,824.00	\$0.00	\$19.50	\$0.00	\$0.00	\$ 7,963.26	3.92%
Tricia Foster	11.70	0.00	0.00	77.30	0.00	1.30	0.00	0.00		
	\$1,520.88	\$0.00	\$0.00	\$6,957.00	\$0.00	\$84.50	\$0.00	\$0.00	\$ 8,562.38	4.21%
Will Froilan	20.70	0.00	0.00	75.90	0.00	0.90	0.00	0.00		
	\$2,690.79	\$0.00	\$0.00	\$6,831.00	\$0.00	\$58.50	\$0.00	\$0.00	\$ 9,580.29	4.71%
Helka Gienapp	1.80	0.00	0.00	37.10	28.00	3.10	0.00	0.00		
	\$233.98	\$0.00	\$0.00	\$3,339.00	\$1,105.44	\$201.50	\$0.00	\$0.00	\$ 4,879.92	2.40%
Jodie Grafmiller	0.00	0.00	0.00	26.70	0.00	0.30	0.00	0.00		
	\$0.00	\$0.00	\$0.00	\$2,403.00	\$0.00	\$19.50	\$0.00	\$0.00	\$ 2,422.50	1.19%
Hope Gray	0.00	0.00	0.00	10.50	0.00	0.00	0.00	0.00		
	\$0.00	\$0.00	\$0.00	\$10,395.00	\$0.00	\$0.00	\$0.00	\$0.00	\$ 10,395.00	5.11%
Brad Hedges	0.00	11.80	0.00	2.80	0.00	0.00	0.00	0.00		
	\$0.00	\$1,533.88	\$0.00	\$252.00	\$0.00	\$0.00	\$0.00	\$0.00	\$ 1,785.88	0.88%
Stacy Ingraham	6.00	0.00	0.00	66.40	0.00	3.20	0.00	0.00		
	\$779.94	\$0.00	\$0.00	\$5,976.00	\$0.00	\$208.00	\$0.00	\$0.00	\$ 6,963.94	3.43%
Emily Joseph	11.20	0.00	0.00	56.00	0.00	2.80	0.00	0.00		
	\$1,455.89	\$0.00	\$0.00	\$5,040.00	\$0.00	\$182.00	\$0.00	\$0.00	\$ 6,677.89	3.29%
Joni Krzycki	8.60	0.00	0.00	22.40	0.00	0.70	0.00	0.00		
	\$1,117.91	\$0.00	\$0.00	\$2,016.00	\$0.00	\$45.50	\$0.00	\$0.00	\$ 3,179.41	1.56%
Amanda Martin	1.50	0.00	0.00	89.90	0.00	10.70	0.00	0.00		
	\$195	\$0.00	\$0.00	\$8,091.00	\$0.00	\$695.50	\$0.00	\$0.00	\$ 8,981.49	4.42%
Amynda Martin	2.50	0.00	0.00	5.70	0.00	0.00	0.00	6.00		
	\$324.98	\$0.00	\$0.00	\$513.00	\$0.00	\$0.00	\$0.00	\$210.00	\$ 1,047.98	0.52%
Jessica Mitchell	3.00	0.00	0.00	18.30	0.00	0.00	0.00	0.00		
	\$389.97	\$0.00	\$0.00	\$1,647.00	\$0.00	\$0.00	\$0.00	\$0.00	\$ 2,036.97	1.00%
Arianna Profato	0.00	0.00	0.00	1.00	0.00	0.00	0.00	0.00		
	\$0.00	\$0.00	\$0.00	\$90.00	\$0.00	\$0.00	\$0.00	\$0.00	\$ 90.00	0.04%
Robin Rippeth	2.00	6.50	0.00	2.00	0.00	2.00	0.00	0.00		
	\$259.98	\$844.94	\$0.00	\$180.00	\$0.00	\$130.00	\$0.00	\$0.00	\$ 1,414.92	0.70%
Kelly Roberts	2.00	0.00	0.00	22.80	0.00	0.50	0.00	0.00		
	\$259.98	\$0.00	\$0.00	\$2,052.00	\$0.00	\$32.50	\$0.00	\$0.00	\$ 2,344.48	1.15%
Claire Robitaille	13.40	0.00	0.00	42.10	0.00	2.40	0.00	0.00		
	\$1,741.87	\$0.00	\$0.00	\$3,789.00	\$0.00	\$156.00	\$0.00	\$0.00	\$ 5,686.87	2.80%
Allisha Rone	0.00	0.00	0.00	58.90	0.00	0.50	0.00	0.00		
	\$0.00	\$0.00	\$0.00	\$5,301.00	\$0.00	\$32.50	\$0.00	\$0.00	\$ 5,333.50	2.62%
Jennifer Schwind	11.40	0.00	0.00	52.20	0.00	3.40	0.00	0.00		
	\$1,481.89	\$0.00	\$0.00	\$4,698.00	\$0.00	\$221.00	\$0.00	\$0.00	\$ 6,400.89	3.15%
Mike Selegue	7.00	0.00	0.00	57.00	7.60	0.50	0.00	0.00		
	\$909.93	\$0.00	\$0.00	\$5,130.00	\$300.05	\$32.50	\$0.00	\$0.00	\$ 6,372.48	3.14%
Ashley Shoemaker	0.00	0.00	0.00	2.20	0.00	0.40	0.00	0.00		
	\$0.00	\$0.00	\$0.00	\$2,178.00	\$0.00	\$0.00	\$0.00	\$0.00	\$ 2,178.00	1.07%
Samantha Skoczylas	17.40	1.30	0.00	36.50	22.50	1.40	0.00	0.00		
	\$2,261.83	\$168.99	\$0.00	\$3,285.00	\$888.30	\$91.00	\$0.00	\$0.00	\$ 6,695.11	3.29%
Sonya Slater	3.90	8.00	0.00	15.90	0.00	1.50	0.00	0.00		
	\$506.96	\$1,039.92	\$0.00	\$1,431.00	\$0.00	\$97.50	\$0.00	\$0.00	\$ 3,075.38	1.51%
Beth Sleeper	16.60	0.00	0.00	34.80	0.00	1.20	0.00	0.00		
	\$2,157.83	\$0.00	\$0.00	\$3,132.00	\$0.00	\$78.00	\$0.00	\$0.00	\$ 5,367.83	2.64%
Sheridan Smith	0.00	0.00	0.00	0.00	0.00	0.00	53.30	0.00		
	\$0.00	\$0.00	\$0.00	\$0.00	\$0.00	\$0.00	\$10,393.50	\$0.00	\$ 10,393.50	5.11%
Sarah Sohar	8.90	0.00	0.00	0.00	0.00	0.00	0.00	0.00		
	\$1,156.91	\$0.00	\$0.00	\$0.00	\$0.00	\$0.00	\$0.00	\$0.00	\$ 1,156.91	0.57%
Heather Stevens	9.00	0.00	0.00	67.60	47.30	7.70	0.00	0.00		
	\$1,169.91	\$0.00	\$0.00	\$6,084.00	\$1,867.40	\$500.50	\$0.00	\$0.00	\$ 9,621.81	4.73%
Cara Sussman	9.00	0.00	0.00	71.60	0.00	5.10	0.00	0.00		
	\$1,169.91	\$0.00	\$0.00	\$6,444.00	\$0.00	\$331.50	\$0.00	\$0.00	\$ 7,945.41	3.91%
Caleb Tipple	0.00	0.00	0.00	0.00	0.00	85.40	0.00	0.00		
	\$0.00	\$0.00	\$0.00	\$0.00	\$0.00	\$5,551.00	\$0.00	\$0.00	\$ 5,551.00	2.73%
Thomas Vajen	\$0.00	\$0.00	\$0.00	\$0.00	\$0.00	\$0.00	\$5.10	\$0.00		
	\$0.00	\$0.00	\$0.00	\$0.00	\$0.00	\$0.00	\$994.50	\$0.00	\$ 994.50	0.49%
Miranda Zircher	7.50	0.00	0.00	74.90	24.00	6.00	0.00	0.00		
	\$974.93	\$0.00	\$0.00	\$6,741.00	\$947.52	\$390.00	\$0.00	\$0.00	\$ 9,053.45	4.45%
Sum Totals	\$29,897.70	\$5,836.55	\$0.00	\$129,339.00	\$9,056.71	\$16,074.50	\$12,714.00	\$350.00	\$203,268.46	

This chart represents the percentage of the total dollars billed by clinician.