

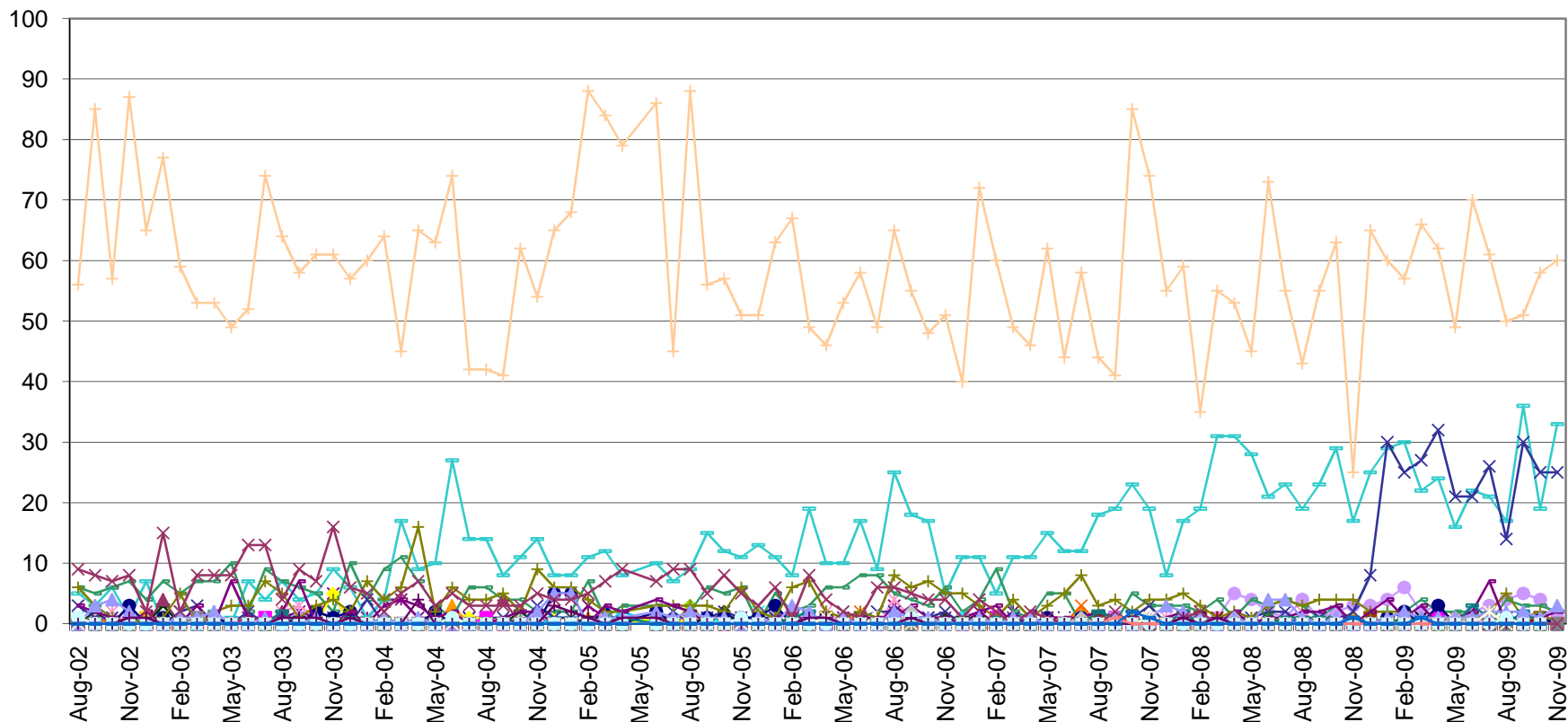
NOVEMBER 2009

UTILIZATION REVIEW

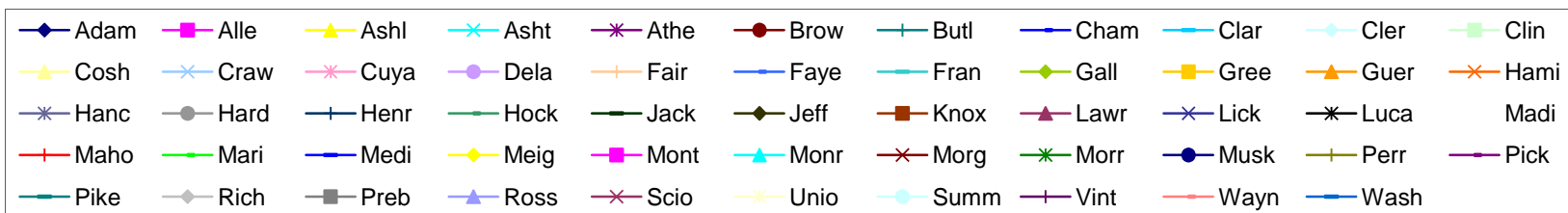
Clinician	Number of Clients Assigned	Number of Clients Seen	Number of Services Rendered	Average Number of Contacts Per Client Seen
Dean Bachelor, M.Div.	60	29	64	2.21
Kimberly Blair, M.A., PC	84	31	73	2.35
Misty Coleman, MSW, LISW	117	32	73	2.28
Janet Crabtree, BA, CT	17	26	78	3.00
Scott Craft, Ph.D.	64	29	54	1.86
Rachel Cranmer, MA, PC	49	30	64	2.13
Daniel DiSalvo, CNP	20	17	18	1.06
Joe Dunson, M.Ed., PC	201	43	78	1.81
Tricia Foster, Ph.D.	135	41	85	2.07
Helka Gienapp, B.A.	70	15	44	2.93
Jodie Grafmiller, BA	43	16	39	2.44
Hope Gray	42	25	41	1.64
Brad Hedges, Ph.D., PCC	42	18	19	1.06
Stacy Ingraham, BA	93	36	76	2.11
Jennifer Jones	68	30	47	1.57
Kalinda Jones	55	29	104	3.59
Emily Joseph, BA	117	42	80	1.90
Joni Krzycki, Ph.D., PCC	69	20	35	1.75
Amanda Martin, M.Ed. PC	89	39	155	3.97
Amynda Martin, PsyD	56	11	23	2.09
Jessica Mitchell, MA, PC	45	12	24	2.00
Arianna Profato, BA	46	12	33	2.75
Robin Rippeth Ph.D., PCC	92	10	12	1.20
Kelly Roberts, MA	63	31	67	2.16
Claire Robitaille, M.S., LSW	91	24	55	2.29
Jennifer Schwind, M.A.	150	51	82	1.61
Mike Selegue, MSW, LISW	119	49	109	2.22
Ronak Shariati	82	24	53	2.20
Ashley Shoemaker	37	15	28	1.87
Sonya Slater, PsyD	24	14	22	1.57
Beth Sleeper	127	44	95	2.16
Sarah Sohar, MA, PC	93	40	92	2.30
Heather Stevens, MSW, LSW	86	37	117	3.16
Cara Sussman, B.A.	79	37	71	1.92
Caleb Tipple, B.S.	24	30	90	3.00
Thomas Vajen	45	39	40	1.03
Miranda Zircher, MS, PC	98	38	86	2.26
Average	75	29	63	2.15

The No Show rate for November was 19%. When considering both the no show rate and the cancellation rate, this figure is 35%.

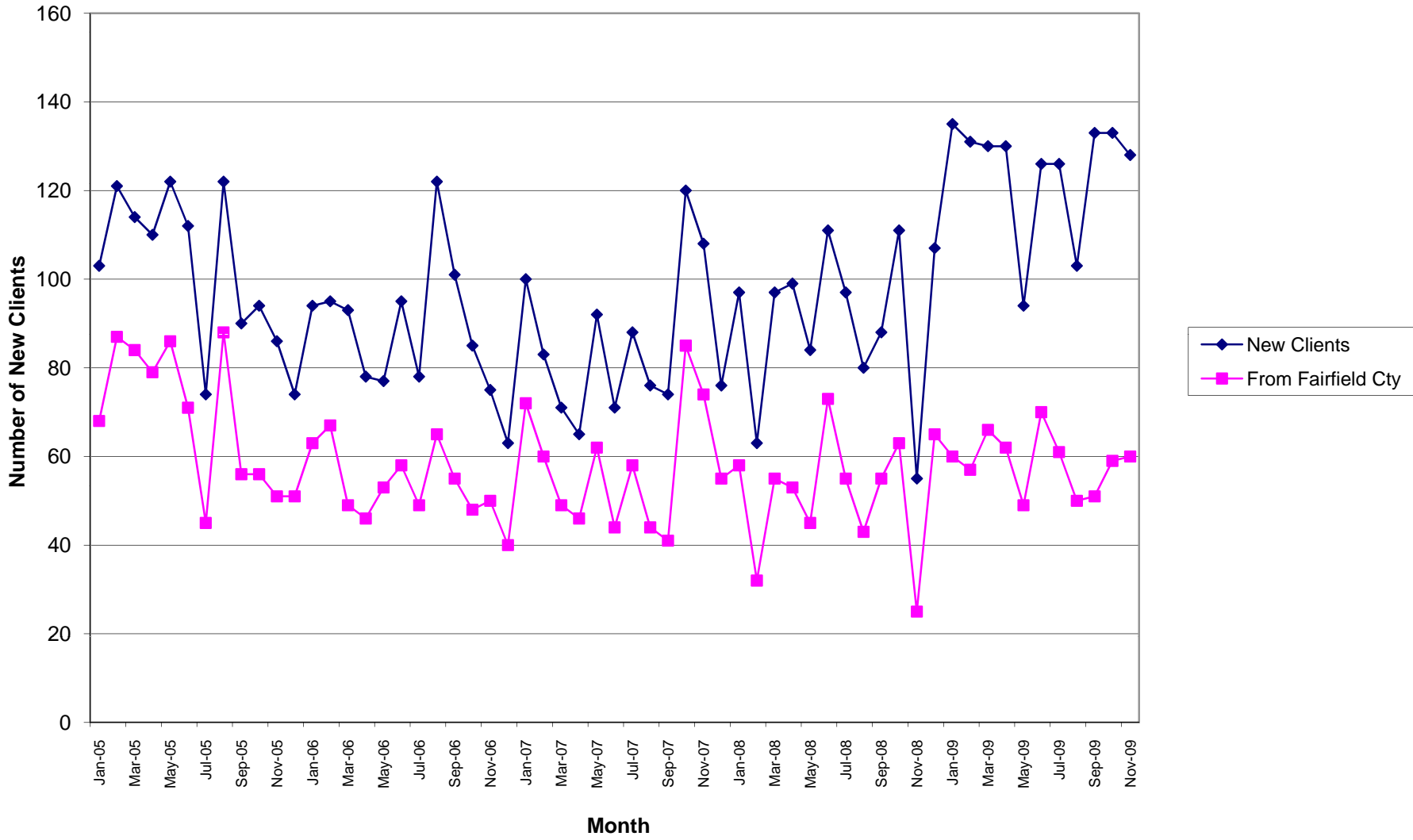
Number of Intakes by County



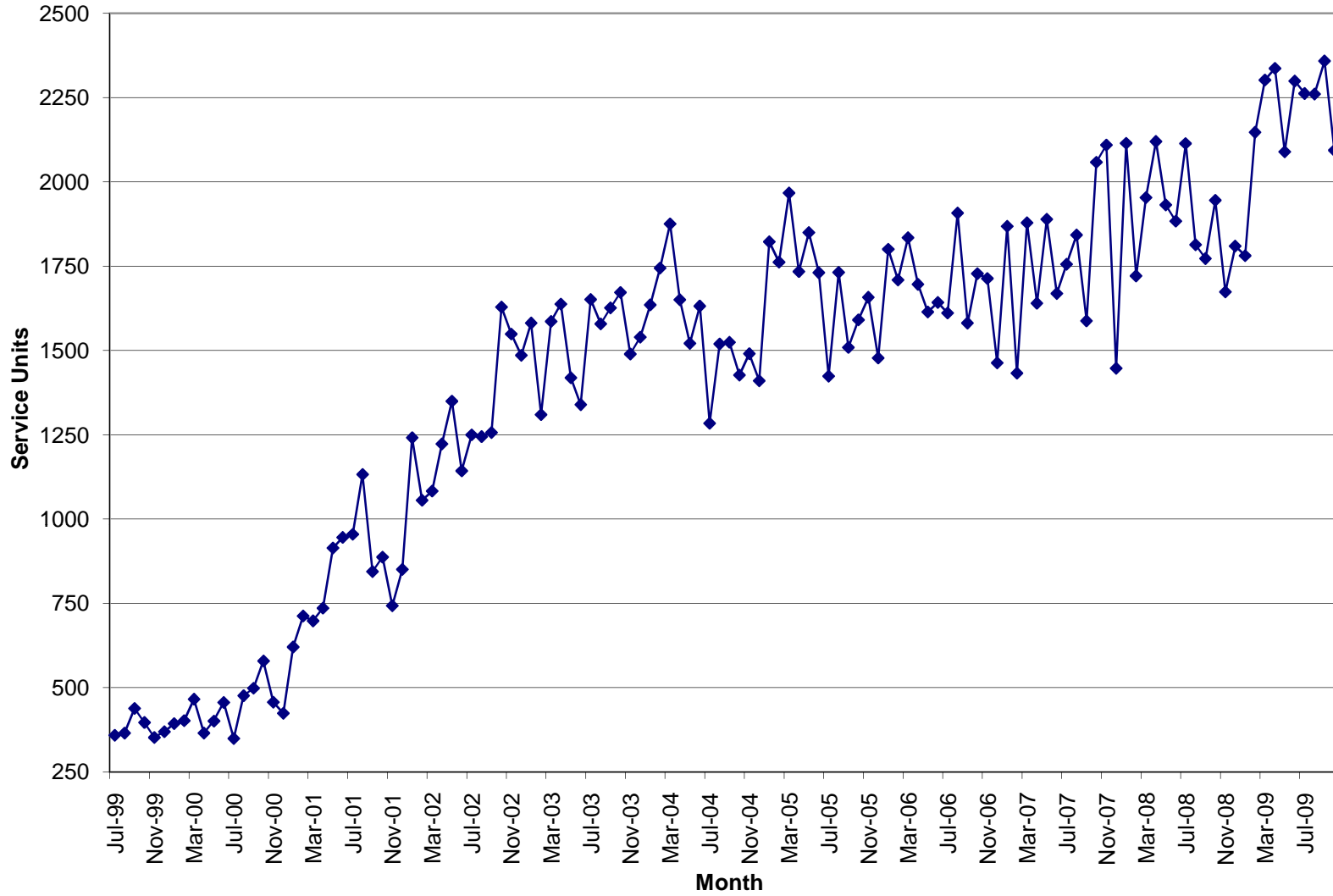
Prior to 9/05 the numbers reported were somewhat inflated due to a report issue that has been corrected.



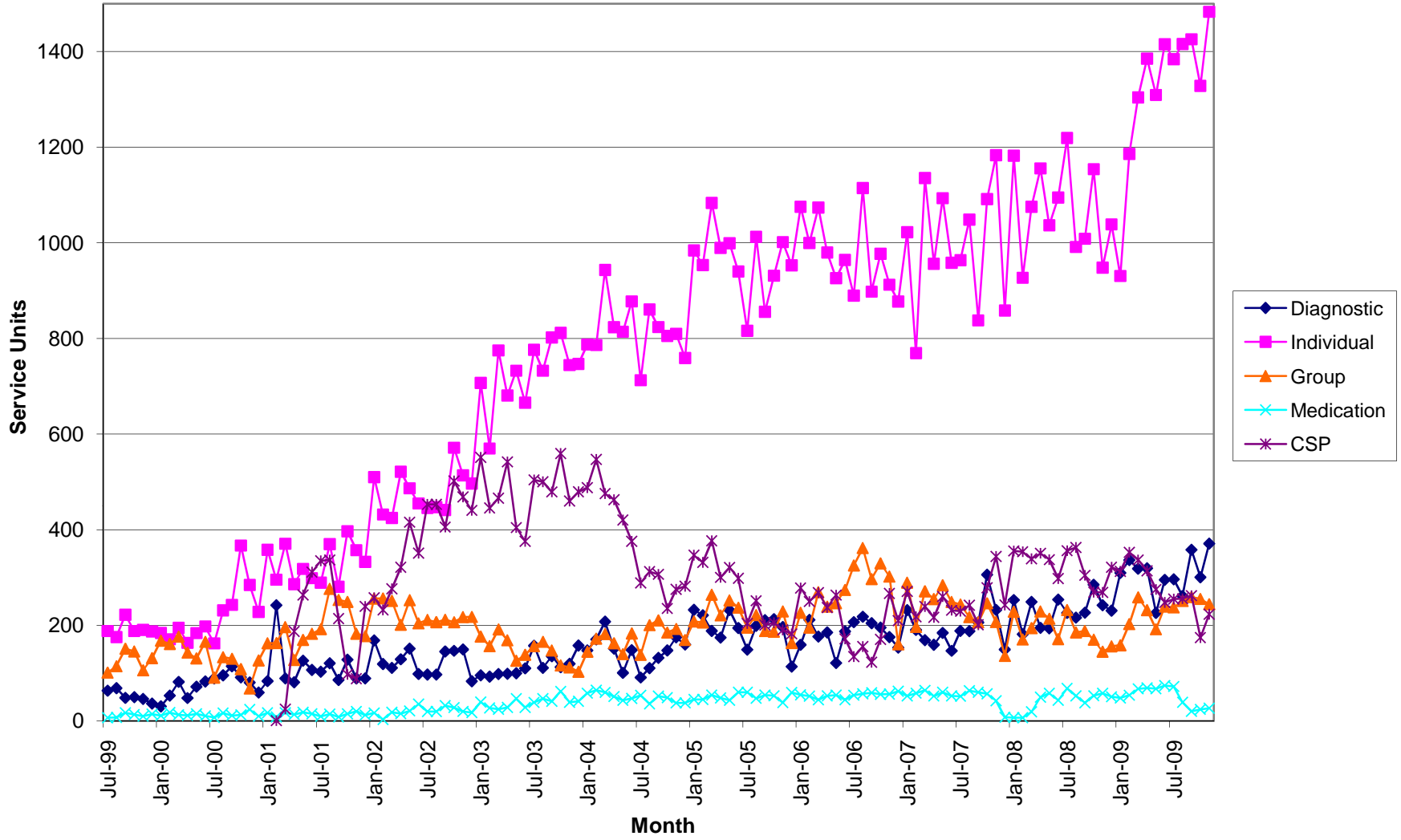
New Clients



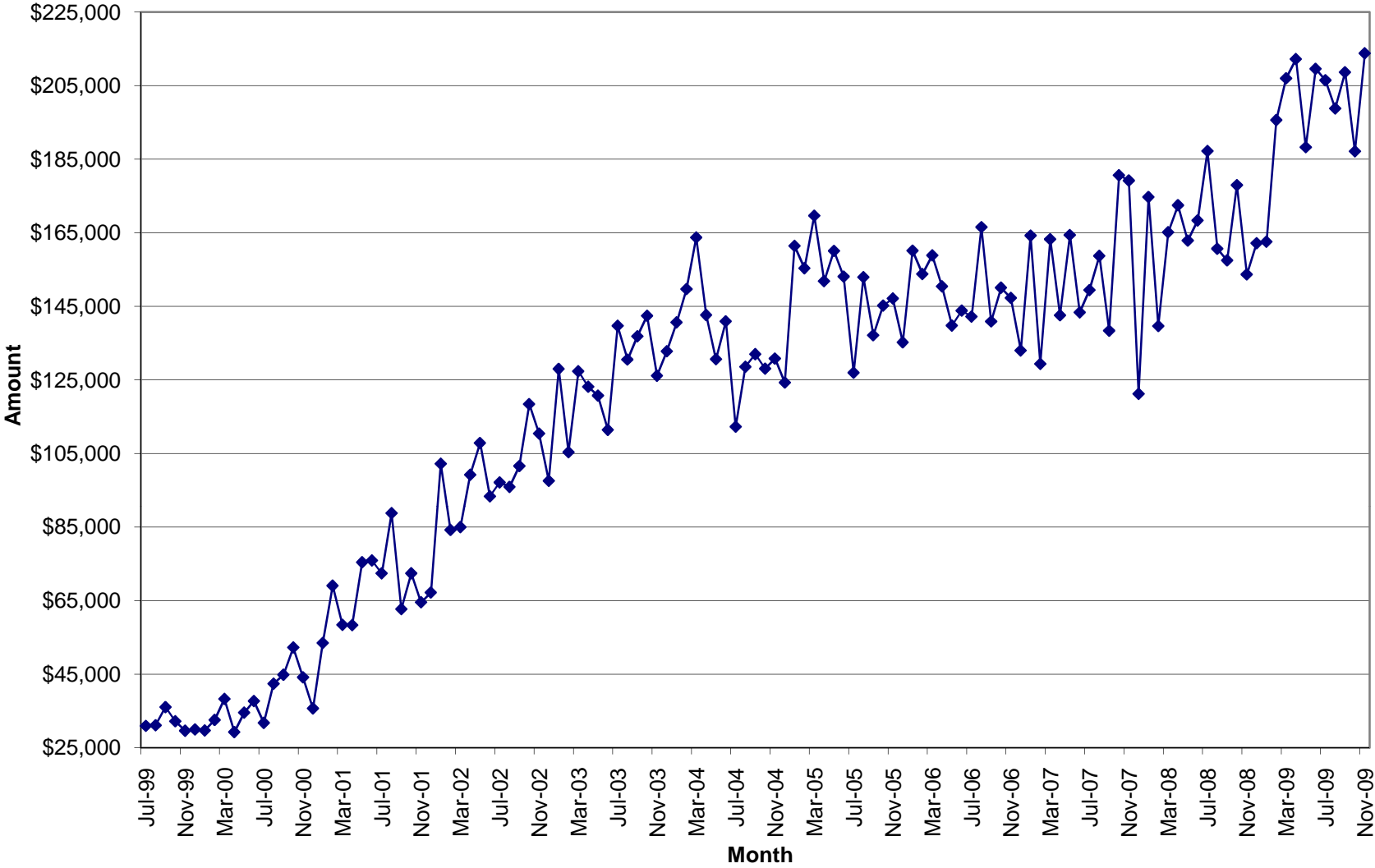
Total Units of Service



Units of Service



Total Units \$



November 2009

Unit Production & Scheduling Proficiency by Clinician
Mid Ohio Psychological Services

	Cancellations	Missed	Diagnostics	Evaluations	AOD Assessments	Individual	Group	Community Support	Medication	Other Units	Total Units	Billable Units	Units Billed+ Missed	Schedule Proficiency	% Canceled	% Missed	Lost Units due to C & M	% of Total Billable Units	High Scheduling Proficiency	Significantly Low Scheduling Proficiency
Unit Rate			129.99	129.99	96.24	90	39.48	65	195	35										
Dean Bachelor	9	13	21.00	0.00	0.00	20.50	62.00	0.00	0.0		125.50	103.50	116.50	89%	7%	10%	18%	4.36%	Yes	No
Kimberly Blair	21	10	0.00	11.80	0.00	58.00	0.00	3.90	0.0		104.70	73.70	83.70	70%	20%	10%	30%	3.10%	No	No
Misty Coleman	27	27	7.50	0.00	0.00	66.00	0.00	0.90	0.0		128.40	74.40	101.40	58%	21%	21%	42%	3.13%	No	No
Janet Crabtree	0	0	0.00	0.00	0.00	0.00	0.00	76.30	0.0		76.30	76.30	76.30					3.21%		
Scott Craft	13	8	0.00	0.00	0.00	34.10	3.00	0.60	0.0	10.0	68.70	47.70	55.70	69%	19%	12%	31%	2.01%	No	No
Rachel Cramner	12	16	7.80	0.00	0.00	47.60	0.00	2.70	0.0		86.10	58.10	74.10	67%	14%	19%	33%	2.44%	No	No
Daniel DiSalvo	5	6	0.00	0.00	0.00	0.00	0.00	0.00	9.7		20.70	9.70	15.70	47%	24%	29%	53%	0.41%	No	Yes
Joe Dunson	22	27	15.50	0.00	0.00	62.50	0.00	1.20	0.0		128.20	79.20	106.20	62%	17%	21%	38%	3.33%	No	No
Tricia Foster	13	10	20.10	0.00	0.00	72.00	0.00	0.30	0.0		115.40	92.40	102.40	80%	11%	9%	20%	3.89%	Yes	No
Helka Gienapp	1	14	6.30	0.00	0.00	22.00	33.40	0.20	0.0		76.90	61.90	75.90	80%	1%	18%	20%	2.60%	Yes	No
Jodi Grafmiller	8	8	0.00	0.00	0.00	36.60	0.00	0.20	0.0		52.80	36.80	44.80	70%	15%	15%	30%	1.55%	No	No
Hope Gray	16	23	0.00	0.00	0.00	36.30	0.00	0.00	0.0		75.30	36.30	59.30	48%	21%	31%	52%	1.53%	No	Yes
Brad Hedges	15	0	0.00	21.00	0.00	0.00	0.00	0.00	0.0		36.00	21.00	21.00	58%	42%	0%	42%	0.88%	No	No
Stacy Ingraham	14	19	10.60	0.00	0.00	67.20	0.00	1.40	0.0		112.20	79.20	98.20	71%	12%	17%	29%	3.33%	No	No
Jennifer Jones	8	31	6.80	2.60	0.00	38.70	0.00	0.00	0.0		87.10	48.10	79.10	55%	9%	36%	45%	2.02%	No	No
Kalinda Jones	14	13	11.00	0.00	0.00	66.10	22.50	5.90	0.0		132.50	105.50	118.50	80%	11%	10%	20%	4.44%	Yes	No
Emily Joseph	11	33	14.60	0.00	0.00	62.20	0.00	2.60	0.0		123.40	79.40	112.40	64%	9%	27%	36%	3.34%	No	No
Joni Krzycki	13	6	4.80	5.20	0.00	24.00	0.00	1.20	0.0		54.20	35.20	41.20	65%	24%	11%	35%	1.48%	No	No
Amanda Martin	26	18	4.00	0.00	0.00	117.90	0.00	15.80	0.0		181.70	137.70	155.70	76%	14%	10%	24%	5.79%	No	No
Amynda Martin	11	2	7.00	0.00	0.00	5.00	0.00	0.90	0.0	19.0	44.90	31.90	33.90	71%	24%	4%	29%	1.34%	No	No
Jessica Mitchell	4	8	11.80	0.00	0.00	17.70	0.00	0.30	0.0		41.80	29.80	37.80					1.25%	No	Yes
Arianna Profato	3	15	0.00	0.00	0.00	26.60	0.00	3.30	0.0		47.90	29.90	44.90	62%	6%	31%	38%	1.26%	No	No
Robin Rippeth	2	4	1.00	13.60	0.00	0.00	0.00	1.20	0.0		21.80	15.80	19.80	72%	9%	18%	28%	0.66%	No	No
Kelly Roberts	20	21	30.30	0.00	0.00	58.10	0.00	2.00	0.0		131.40	90.40	111.40	69%	15%	16%	31%	3.80%	No	No
Claire Robitaille	22	12	6.00	0.00	0.00	48.20	0.00	2.00	0.0		90.20	56.20	68.20	62%	24%	13%	38%	2.36%	No	No
Jennifer Schwind	20	20	27.70	0.00	0.00	51.50	0.00	1.40	0.0		120.60	80.60	100.60	67%	17%	17%	33%	3.39%	No	No
Mike Selegue	17	36	16.70	0.00	0.00	75.40	12.00	2.20	0.0		159.30	106.30	142.30	67%	11%	23%	33%	4.47%	No	No
Ronak Shariati	15	23	23.40	0.00	0.00	20.70	13.30	0.30	0.0		95.70	57.70	80.70	60%	16%	24%	40%	2.43%	No	No
Ashley Shoemaker	10	13	0.00	0.00	0.00	27.70	0.00	0.00	0.0		50.70	27.70	40.70	55%	20%	26%	45%	1.17%	No	Yes
Sonya Slater	8	5	1.80	3.00	0.00	14.10	0.00	1.30	0.0		33.20	20.20	25.20	61%	24%	15%	39%	0.85%	No	No
Beth Sleeper	19	40	12.80	8.50	0.00	62.60	16.70	3.10	0.0		162.70	103.70	143.70	64%	12%	25%	36%	4.36%	No	No
Sarah Sohar	15	38	18.10	0.00	0.00	66.40	0.00	4.60	0.0		142.10	89.10	127.10	63%	11%	27%	37%	3.75%	No	No
Heather Stevens	16	27	7.00	0.00	0.00	51.00	78.30	2.40	0.0		181.70	138.70	165.70	76%	9%	15%	24%	5.84%	No	No
Cara Sussman	13.00	22.00	10.40	0.00	0.00	59.20	0.00	1.80	0.00		106.4	71.40	93.40	67%	12%	21%	33%	3.00%	No	No
Caleb Tipple	0.00	0.00	0.00	0.00	0.00	0.00	0.00	80.80	0.00		80.8	80.80	80.80					3.40%		
Thomas Vajen	4.00	12.00	0.00	0.00	0.00	0.00	0.00	0.00	16.90		32.9	16.90	28.90	51%	12%	36%	49%	0.71%	No	Yes
Miranda Zircher	46	25	1.00	0.00	0.00	67.10	3.00	2.20	0.0		144.30	73.30	98.30	51%	32%	17%	49%	3.08%	No	Yes
Sum Totals	493.00	605.00	305.00	65.70	0.00	1483.00	244.20	223.00	26.60	29.00	3474.50	2376.50	2981.50	66%	16%	19%	35%	2.70%		
Average																				

* These clinicians do not have a daily scheduler therefore their totals are not reported in the missed or cancelled sessions.

% of Agency \$ Billed by Clinician

November	2009								Tot Units	% of Tot
	DA	Eval	AOD	IND	Group	CSP	MED	Other		
Unit Rate	\$ 129.99	\$ 129.99	\$ 96.24	\$ 90	\$ 39.48	\$ 65	\$ 195	\$ 35		
Dean Bachelor	21.00	0.00	0.00	20.50	62.00	0.00	0.00	0.00		
	\$2,730	\$0	\$0	\$1,845	\$2,448	\$0	\$0	\$0	\$ 7,022.55	2.78%
Kimberly Blair	0.00	11.80	0.00	58.00	0.00	3.90	0.00	0.00		
	\$0.00	\$1,533.88	\$0.00	\$5,220.00	\$0.00	\$253.50	\$0.00	\$0.00	\$ 7,007.38	2.78%
Misty Coleman	7.50	0.00	0.00	66.00	0.00	0.90	0.00	0.00		
	\$974.93	\$0.00	\$0.00	\$5,940.00	\$0.00	\$58.50	\$0.00	\$0.00	\$ 6,973.43	2.76%
Janet Crabtree	0.00	0.00	0.00	0.00	0.00	76.30	0.00	0.00		
	\$0.00	\$0.00	\$0.00	\$0.00	\$0.00	\$4,959.50	\$0.00	\$0.00	\$ 4,959.50	1.97%
Scott Craft	0.00	0.00	0.00	34.10	3.00	0.60	0.00	10.00		
	\$0.00	\$0.00	\$0.00	\$3,069.00	\$118.44	\$39.00	\$0.00	\$350.00	\$ 3,576.44	1.42%
Rachel Cranmer	7.80	0.00	0.00	47.60	0.00	2.70	0.00	0.00		
	\$1,013.92	\$0.00	\$0.00	\$4,284.00	\$0.00	\$175.50	\$0.00	\$0.00	\$ 5,473.42	2.17%
Daniel DiSalvo	0.00	0.00	0.00	0.00	0.00	0.00	9.70	0.00		
	\$0.00	\$0.00	\$0.00	\$0.00	\$0.00	\$0.00	\$1,891.50	\$0.00	\$ 1,891.50	0.75%
Joe Dunson	15.50	0.00	0.00	62.50	0.00	1.20	0.00	0.00		
	\$2,014.85	\$0.00	\$0.00	\$5,625.00	\$0.00	\$78.00	\$0.00	\$0.00	\$ 7,717.85	3.06%
Tricia Foster	20.10	0.00	0.00	72.00	0.00	0.30	0.00	0.00		
	\$2,612.80	\$0.00	\$0.00	\$6,480.00	\$0.00	\$19.50	\$0.00	\$0.00	\$ 9,112.30	3.61%
Helka Gienapp	6.30	0.00	0.00	22.00	33.40	0.20	0.00	0.00		
	\$818.94	\$0.00	\$0.00	\$1,980.00	\$1,318.63	\$13.00	\$0.00	\$0.00	\$ 4,130.57	1.64%
Jodie Grafmiller	0.00	0.00	0.00	26.70	0.00	0.30	0.00	0.00		
	\$0.00	\$0.00	\$0.00	\$2,403.00	\$0.00	\$19.50	\$0.00	\$0.00	\$ 2,422.50	0.96%
Hope Gray	0.00	0.00	0.00	10.50	0.00	0.00	0.00	0.00		
	\$0.00	\$0.00	\$0.00	\$19,372.50	\$0.00	\$0.00	\$0.00	\$0.00	\$ 19,372.50	7.68%
Brad Hedges	0.00	21.00	0.00	0.00	0.00	0.00	0.00	0.00		
	\$0.00	\$2,729.79	\$0.00	\$0.00	\$0.00	\$0.00	\$0.00	\$0.00	\$ 2,729.79	1.08%
Stacy Ingraham	10.60	0.00	0.00	67.20	0.00	1.40	0.00	0.00		
	\$1,377.89	\$0.00	\$0.00	\$6,048.00	\$0.00	\$91.00	\$0.00	\$0.00	\$ 7,516.89	2.98%
Emily Joseph	14.60	0.00	0.00	62.20	0.00	2.60	0.00	0.00		
	\$1,897.85	\$0.00	\$0.00	\$5,598.00	\$0.00	\$169.00	\$0.00	\$0.00	\$ 7,664.85	3.04%
Joni Krzycki	4.80	5.20	0.00	24.00	0.00	1.20	0.00	0.00		
	\$623.95	\$675.95	\$0.00	\$2,160.00	\$0.00	\$78.00	\$0.00	\$0.00	\$ 3,537.90	1.40%
Amanda Martin	4.00	0.00	0.00	117.90	0.00	15.80	0.00	0.00		
	\$19.96	\$0.00	\$0.00	\$10,611.00	\$0.00	\$1,027.00	\$0.00	\$0.00	\$ 12,157.96	4.82%
Amynda Martin	7.00	0.00	0.00	5.00	0.00	0.90	0.00	19.00		
	\$909.93	\$0.00	\$0.00	\$450.00	\$0.00	\$58.50	\$0.00	\$665.00	\$ 2,083.43	0.83%
Jessica Mitchell	11.80	0.00	0.00	17.70	0.00	0.30	0.00	0.00		
	\$1,533.88	\$0.00	\$0.00	\$1,593.00	\$0.00	\$19.50	\$0.00	\$0.00	\$ 3,146.38	1.25%
Arianna Profato	0.00	0.00	0.00	1.00	0.00	0.00	0.00	0.00		
	\$0.00	\$0.00	\$0.00	\$90.00	\$0.00	\$0.00	\$0.00	\$0.00	\$ 90.00	0.04%
Robin Rippeth	1.00	13.60	0.00	0.00	0.00	1.20	0.00	0.00		
	\$129.99	\$1,767.86	\$0.00	\$0.00	\$0.00	\$78.00	\$0.00	\$0.00	\$ 1,975.85	0.78%
Kelly Roberts	30.30	0.00	0.00	58.10	0.00	2.00	0.00	0.00		
	\$3,938.70	\$0.00	\$0.00	\$5,229.00	\$0.00	\$130.00	\$0.00	\$0.00	\$ 9,297.70	3.69%
Claire Robitaille	6.00	0.00	0.00	48.20	0.00	2.00	0.00	0.00		
	\$779.94	\$0.00	\$0.00	\$4,338.00	\$0.00	\$130.00	\$0.00	\$0.00	\$ 5,247.94	2.08%
Jennifer Schwind	27.70	0.00	0.00	51.50	0.00	1.40	0.00	0.00		
	\$3,600.72	\$0.00	\$0.00	\$4,635.00	\$0.00	\$91.00	\$0.00	\$0.00	\$ 8,326.72	3.30%
Mike Selegue	16.70	0.00	0.00	75.40	12.00	2.20	0.00	0.00		
	\$2,170.83	\$0.00	\$0.00	\$6,786.00	\$473.76	\$143.00	\$0.00	\$0.00	\$ 9,573.59	3.80%
Ashley Shoemaker	0.00	0.00	0.00	27.70	0.00	0.00	0.00	0.00		
	\$0.00	\$0.00	\$0.00	\$51,106.50	\$0.00	\$0.00	\$0.00	0	\$ 51,106.50	20.26%
Sonya Slater	1.80	3.00	0.00	14.10	0.00	1.30	0.00	0.00		
	\$233.98	\$389.97	\$0.00	\$1,269.00	\$0.00	\$84.50	\$0.00	\$0.00	\$ 1,977.45	0.78%
Beth Sleeper	12.80	8.50	0.00	62.60	16.70	3.10	0.00	0.00		
	\$1,663.87	\$1,104.92	\$0.00	\$5,634.00	\$659.32	\$201.50	\$0.00	\$0.00	\$ 9,263.60	3.67%
Sarah Sohar	18.10	0.00	0.00	66.40	0.00	4.60	0.00	0.00		
	\$2,352.82	\$0.00	\$0.00	\$5,976.00	\$0.00	\$299.00	\$0.00	\$0.00	\$ 8,627.82	3.42%
Heather Stevens	7.00	0.00	0.00	51.00	78.30	2.40	0.00	0.00		
	\$909.93	\$0.00	\$0.00	\$4,590.00	\$3,091.28	\$156.00	\$0.00	\$0.00	\$ 8,747.21	3.47%
Cara Sussman	10.40	0.00	0.00	59.20	0.00	1.80	0.00	0.00		
	\$1,351.90	\$0.00	\$0.00	\$5,328.00	\$0.00	\$117.00	\$0.00	\$0.00	\$ 6,796.90	2.69%
Caleb Tipple	0.00	0.00	0.00	0.00	0.00	80.80	0.00	0.00		
	\$0.00	\$0.00	\$0.00	\$0.00	\$0.00	\$5,252.00	\$0.00	\$0.00	\$ 5,252.00	2.08%
Thomas Vajen	\$0.00	\$0.00	\$0.00	\$0.00	\$0.00	\$0.00	\$5.10	\$0.00		
	\$0.00	\$0.00	\$0.00	\$0.00	\$0.00	\$0.00	\$994.50	\$0.00	\$ 994.50	0.39%
Miranda Zircher	1.00	0.00	0.00	67.10	3.00	2.20	0.00	0.00		
	\$129.99	\$0.00	\$0.00	\$6,039.00	\$118.44	\$143.00	\$0.00	\$0.00	\$ 6,430.43	2.55%
Sum Totals	\$34,291.36	\$8,202.37	\$0.00	\$183,699.00	\$8,227.63	\$13,884.00	\$2,886.00	\$1,015.00	\$252,205.36	

This chart represents the percentage of the total dollars billed by clinician.