

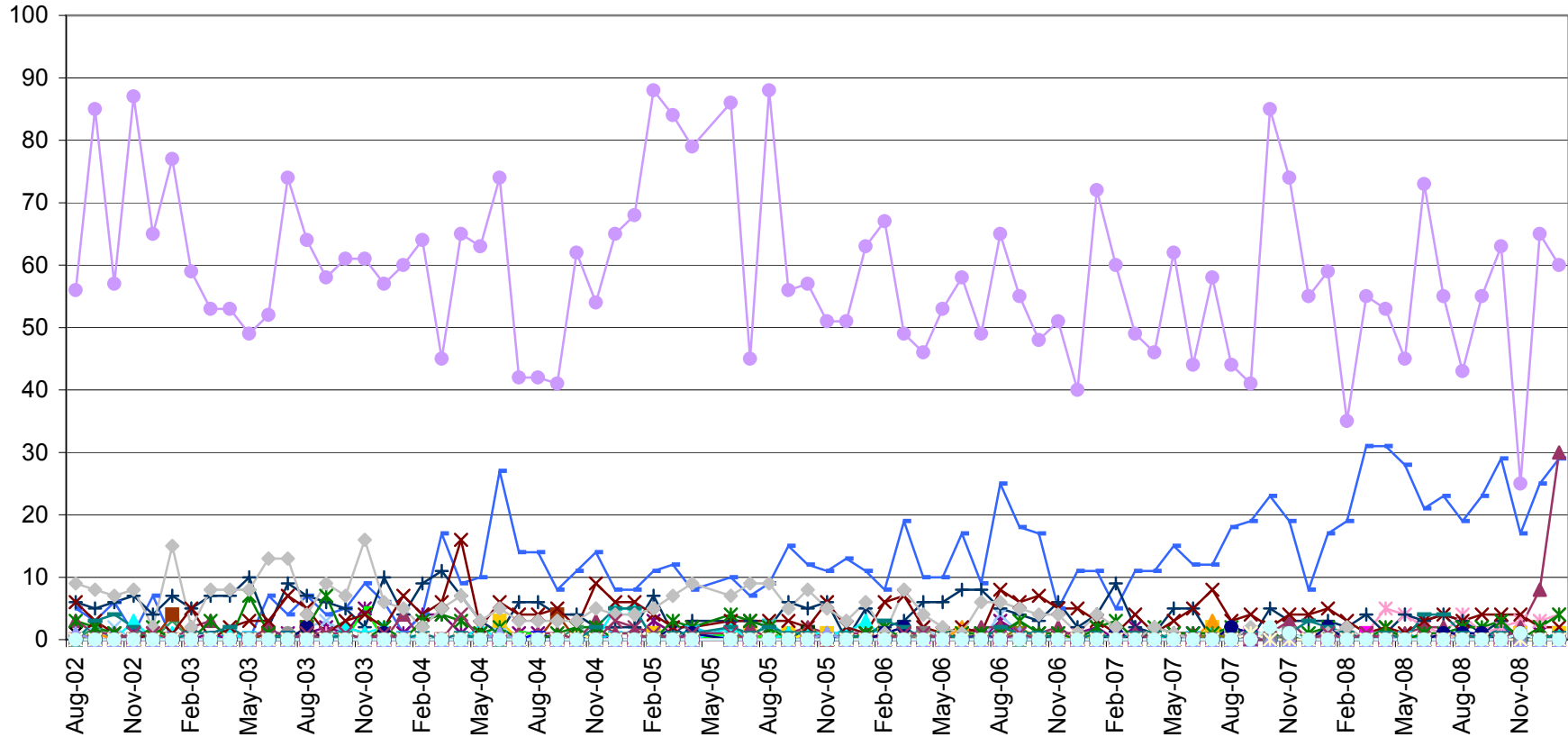
JANUARY 2009

UTILIZATION REVIEW

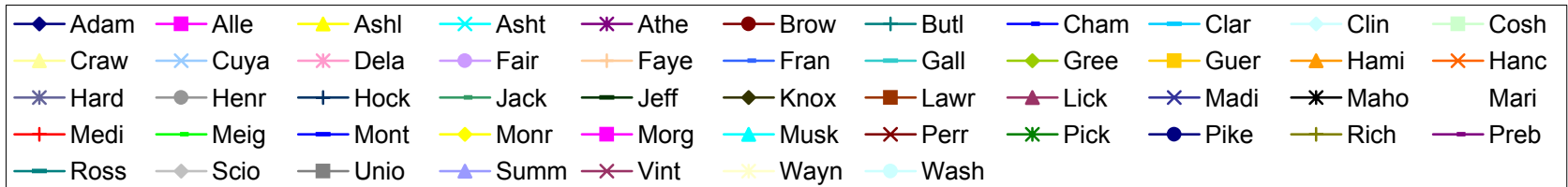
Clinician	Number of Clients Assigned	Number of Clients Seen	Number of Services Rendered	Average Number of Contacts Per Client Seen
Dean Bachelor, M.Div.	21	12	37	3.08
Kimberly Blair, M.A., PC	73	31	85	2.74
Misty Coleman, MSW, LISW	60	33	63	1.91
Janet Crabtree, BA, CT	12	17	77	4.53
Scott Craft, Ph.D.	72	29	62	2.14
Rachel Cranmer, MA, PC	38	23	38	1.65
Jennifer DiBlasio, MA	102	49	98	2.00
Daniel DiSalvo, CNP	20	9	9	1.00
Joe Dunson, M.Ed., PC	147	35	59	1.69
Will Froilan, MA	44	15	31	2.07
Helka Gienapp, B.A.	52	16	45	2.81
Dan Goodwin, BA, LSW	6	16	78	4.88
Joni Grim, Ph.D., PCC	66	15	32	2.13
Brad Hedges, Ph.D., PCC	57	8	8	1.00
Stacy Ingraham, BA	100	36	55	1.53
Emily Joseph, BA	53	24	52	2.17
Amanda Martin, M.Ed. PC	68	36	123	3.42
Amynda Martin, PsyD	74	12	24	2.00
Jessica Mitchell, MA, PC	108	25	36	1.44
Tricia Ostrander, Ph.D.	99	37	56	1.51
Robin Rippeth Ph.D., PCC	57	10	18	1.80
Kelly Roberts, MA	39	25	53	2.12
Claire Robitaille, M.S., LSW	52	27	43	1.59
Allisha Rone, BA	8	6	10	1.67
Jennifer Schwind, M.A.	140	41	88	2.15
Mike Selegue, MSW, LISW	130	46	84	1.83
Samantha Skoczylas, MA	44	23	42	1.83
Sonya Slater, PsyD	28	7	9	1.29
Sheridan Smith, M.D.	70	61	71	1.16
Heather Stevens, MSW, LSW	77	35	114	3.26
Cara Sussman, B.A.	29	17	28	1.65
Caleb Tipple, B.S.	8	31	98	3.16
Miranda Zircher, MS, PC	117	32	89	2.78
Average	62.75	23.61	55.00	2.18

The No Show rate for January was 23%. When considering both the no show rate and the cancellation rate, this figure is 42%.

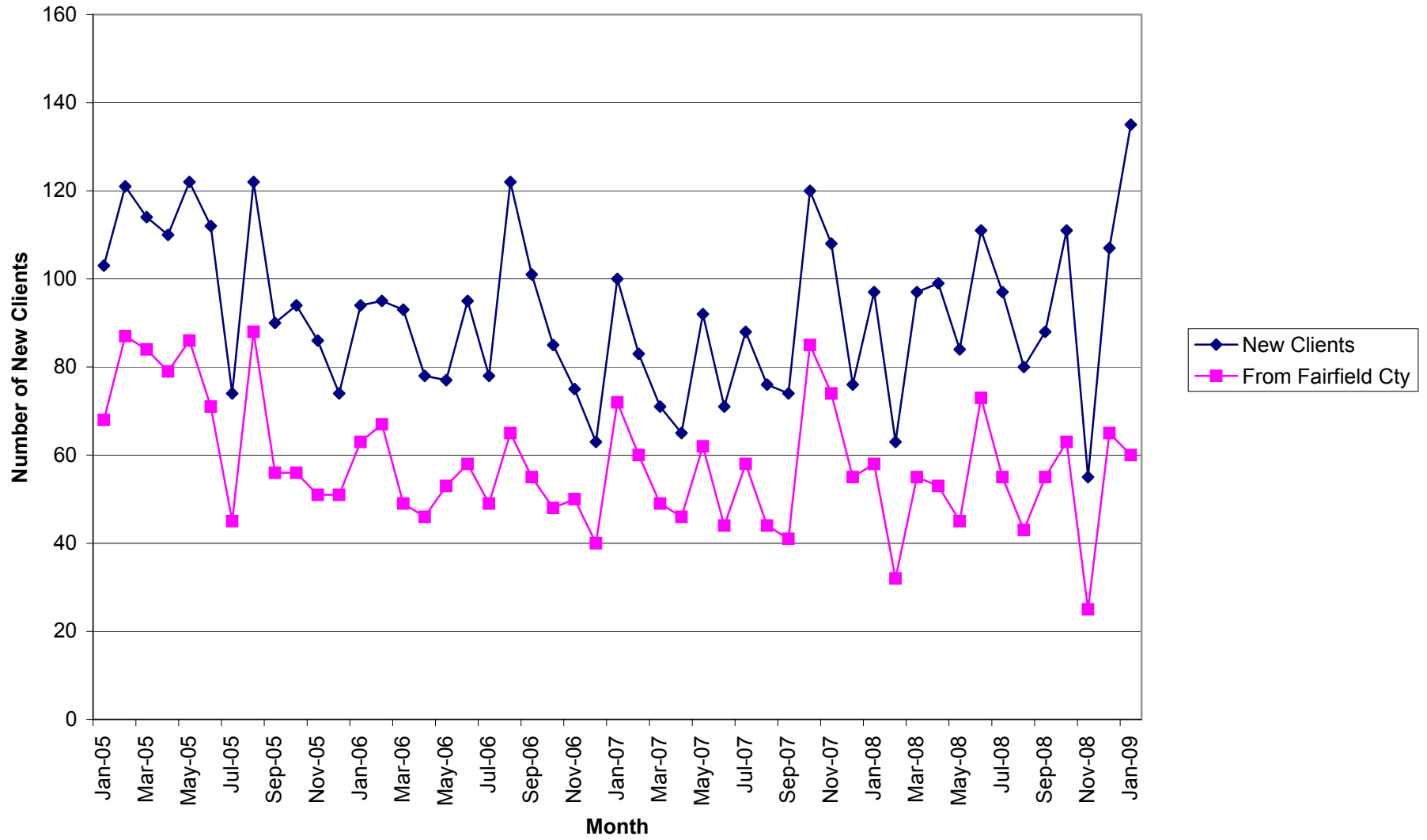
Number of Intakes by County



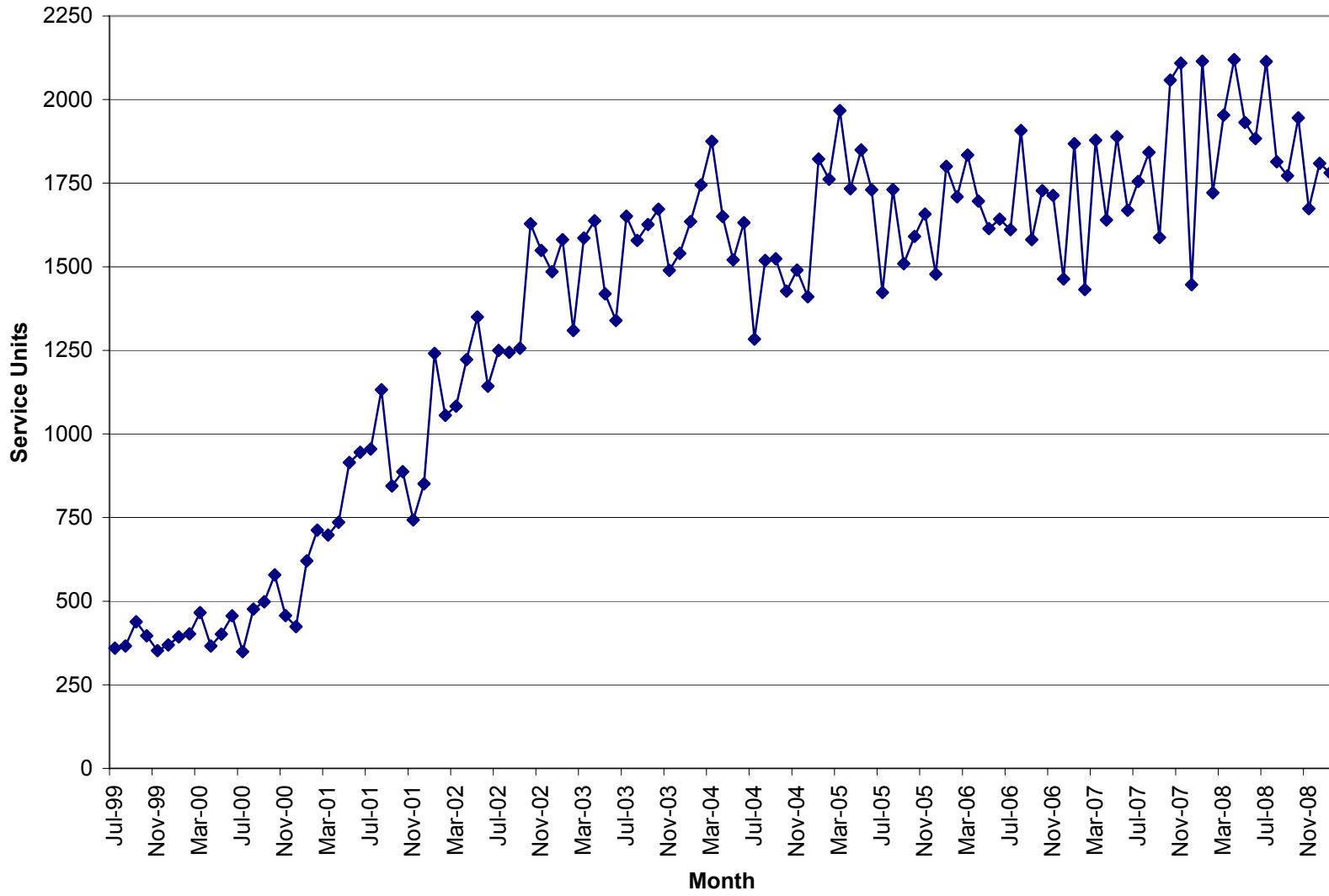
Prior to 9/05 the numbers reported were somewhat inflated due to a report issue that has been corrected.



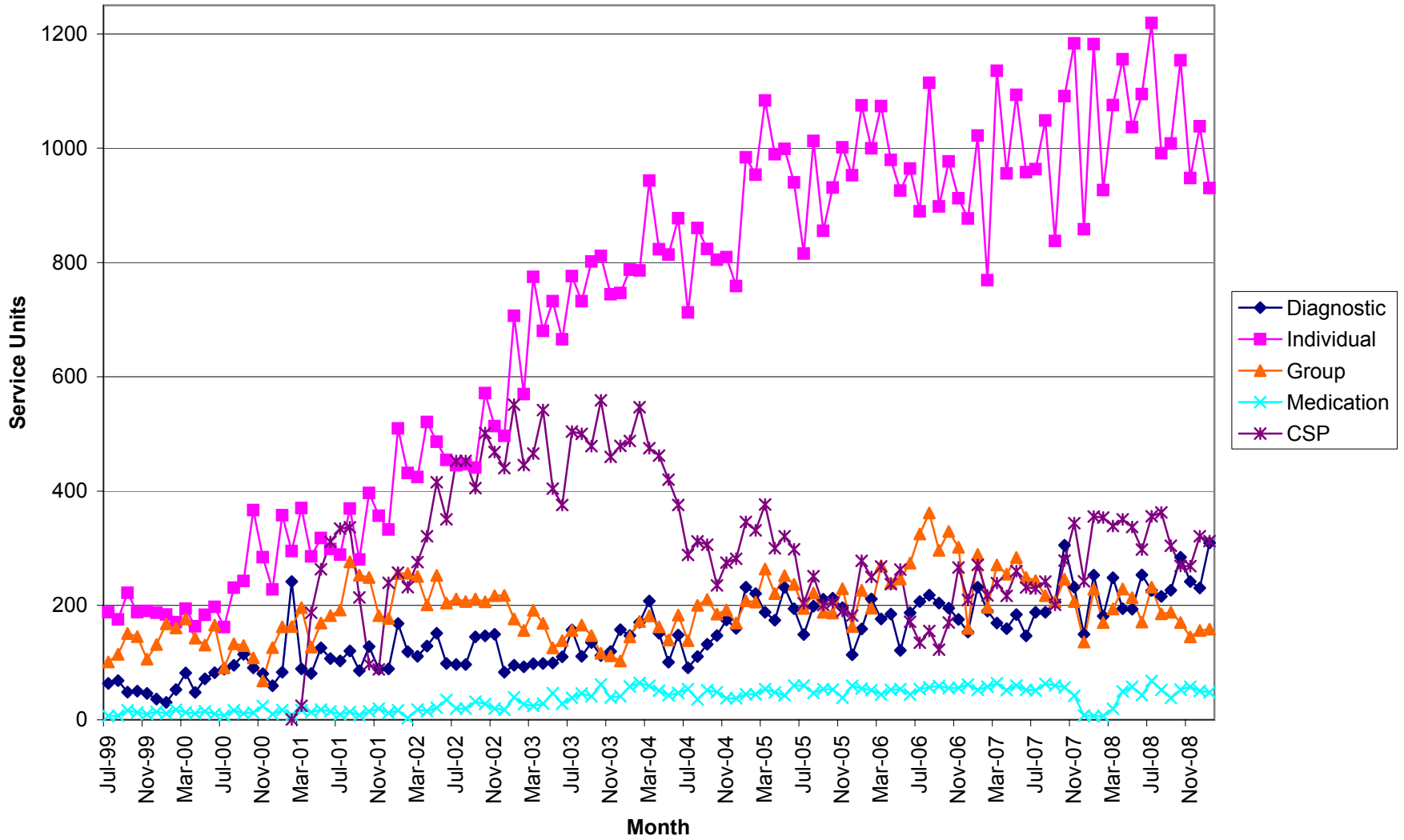
New Clients



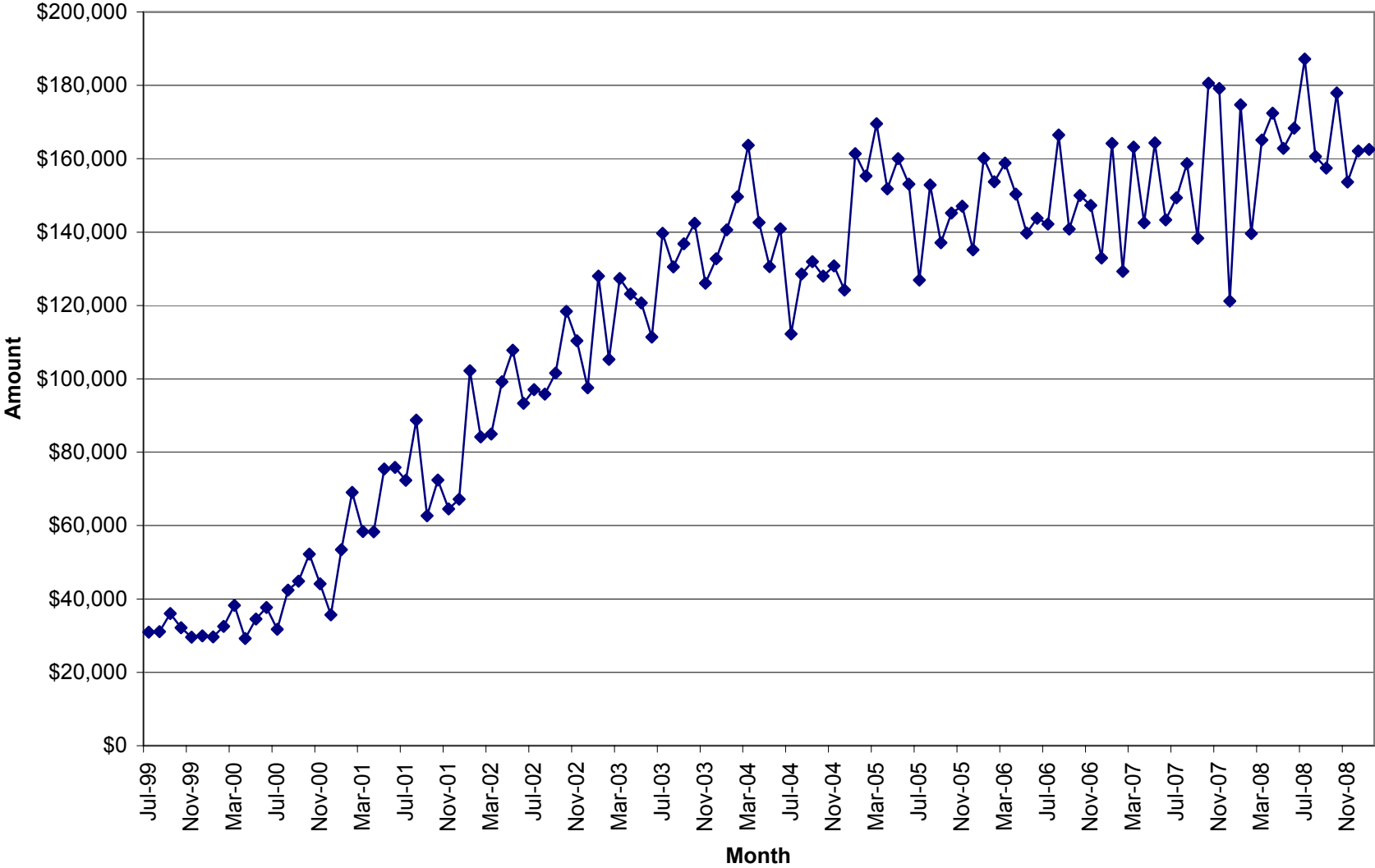
Total Units of Service



Units of Service



Total Units \$



**Unit Production & Scheduling Proficiency by Clinician
Mid Ohio Psychological Services**

January 2009

	Cancellations	Missed	Diagnostics	Evaluations	AOD Assessments	Individual	Group	Community Support	Medication	Other Units	Total Units	Billable Units	Units Billed+ Missed	Schedule Proficiency	% Canceled	% Missed	Lost Units due to C & M	% of Total Billable Units
Unit Rate			129.99	129.99	96.24	90	39.48	65	195	35								
Dean Bachelor	2	5	0.00	0.00	0.00	5.00	60.00	0.30	0.0		72.30	65.30	70.30	93%	3%	7%	10%	3.67%
Kimberly Blair	12	12	1.50	13.00	0.00	47.20	0.00	17.00	0.0		102.70	78.70	90.70	77%	12%	12%	23%	4.42%
Misty Coleman	23	36	13.10	0.00	0.00	35.30	0.00	8.80	0.0		116.20	57.20	93.20	49%	20%	31%	51%	3.21%
Janet Crabtree	0	0	0.00	0.00	0.00	0.00	0.00	76.00	0.0		76.00	76.00	76.00					4.27%
Scott Craft	19	25	0.00	0.00	0.00	28.80	33.50	3.50	0.0	4.0	113.80	69.80	94.80	61%	17%	22%	39%	3.92%
Rachel Cramner	20	18	9.30	0.00	0.00	27.80	0.00	2.60	0.0		77.70	39.70	57.70	51%	26%	23%	49%	2.23%
Jennifer DiBlasio	29	52	14.90	0.00	0.00	60.00	7.90	10.50	0.0		174.30	93.30	145.30	54%	17%	30%	46%	5.24%
Daniel DiSalvo	6	5	0.00	0.00	0.00	0.00	0.00	0.00	5.0		16.00	5.00	10.00	31%	38%	31%	69%	0.28%
Joe Dunson	24	27	9.00	0.00	0.00	43.00	0.00	3.90	0.0		106.90	55.90	82.90	52%	22%	25%	48%	3.14%
Will Froilan	12	27	14.30	6.70	0.00	11.10	0.00	2.50	0.0		73.60	34.60	61.60	47%	16%	37%	53%	1.94%
Helka Gienapp	13	15	2.00	0.00	0.00	26.10	20.20	2.70	0.0		79.00	51.00	66.00	65%	16%	19%	35%	2.86%
Dan Goodwin*	0	0	0.00	0.00	0.00	0.00	0.00	54.00	0.0		54.00	54.00	54.00					3.03%
Joni Grim	21	10	5.20	4.80	0.00	22.00	0.00	2.50	0.0		65.50	34.50	44.50	53%	32%	15%	47%	1.94%
Brad Hedges	1	0	0.00	11.40	0.00	0.00	0.00	0.00	0.0		12.40	11.40	11.40	92%	8%	0%	8%	0.64%
Stacy Ingraham	18	46	15.40	0.00	0.00	38.90	0.00	1.70	0.0		120.00	56.00	102.00	47%	15%	38%	53%	3.14%
Emily Joseph	16	15	10.50	0.00	0.00	33.20	0.00	2.90	0.0		77.60	46.60	61.60	60%	21%	19%	40%	2.62%
Amanda Martin	31	16	2.00	0.00	0.00	104.60	0.00	17.10	0.0		170.70	123.70	139.70	72%	18%	9%	28%	6.95%
Amynda Martin	8	3	8.00	0.00	0.00	9.30	0.00	0.30	0.0	18.0	46.60	35.60	38.60	76%	17%	6%	24%	2.00%
Jessica Mitchell	19	11	21.00	0.00	0.00	16.40	0.00	1.50	0.0		68.90	38.90	49.90	56%	28%	16%	44%	2.18%
Tricia Ostrander	26	17	19.30	0.00	0.00	42.00	0.00	0.80	0.0		105.10	62.10	79.10	59%	25%	16%	41%	3.49%
Robin Rippeth	1	5	0.00	19.10	0.00	4.30	0.00	1.70	0.0		31.10	25.10	30.10	81%	3%	16%	19%	1.41%
Kelly Roberts	19	25	17.90	0.20	0.00	38.60	0.00	2.70	0.0		103.40	59.40	84.40	57%	18%	24%	43%	3.34%
Claire Robitaille	13	21	25.60	0.00	0.00	27.80	0.00	1.00	0.0		88.40	54.40	75.40	62%	15%	24%	38%	3.05%
Allisha Rone	4	6	0.00	0.00	0.00	9.30	0.00	0.00	0.0		19.30	9.30	15.30	48%	21%	31%	52%	0.52%
Jennifer Schwind	14	41	14.90	0.00	0.00	63.50	0.00	2.30	0.0		135.70	80.70	121.70	59%	10%	30%	41%	4.53%
Mike Selegue	25	47	8.00	0.00	0.00	67.40	0.00	1.50	0.0		148.90	76.90	123.90	52%	17%	32%	48%	4.32%
Samantha Skoczylas	10	28	19.20	4.90	0.00	23.90	0.00	0.00	0.0		86.00	48.00	76.00	56%	12%	33%	44%	2.70%
Sonya Slater	6	9	2.00	0.00	0.00	6.50	0.00	0.20	0.0		23.70	8.70	17.70	37%	25%	38%	63%	0.49%
Sheridan Smith	41	37	0.00	0.00	0.00	0.00	0.00	0.00	42.8		120.80	42.80	79.80	35%	34%	31%	65%	2.40%
Heather Stevens	31	36	9.30	0.00	0.00	51.30	36.80	7.60	0.0		172.00	105.00	141.00	61%	18%	21%	39%	5.90%
Cara Sussman	11.00	26.00	0.00	0.00	0.00	26.60	0.00	0.70	0.00		64.3	27.30	53.30	42%	17%	40%	58%	1.53%
Caleb Tipple	0.00	0.00	0.00	0.00	0.00	0.00	0.00	80.10	0.00		80.1	80.10	80.10					4.50%
Miranda Zircher	32	24	7.00	0.00	0.00	60.50	0.00	6.40	0.0		129.90	73.90	97.90	57%	25%	18%	43%	4.15%
Sum Totals	507.00	645.00	249.40	60.10	0.00	930.40	158.40	312.80	47.80	22.00	2932.90	1780.90	2425.90					
Average														58%	19%	23%	42%	3.03%

* These clinicians do not have a daily scheduler therefore their totals are not reported in the missed or cancelled sessions.

% of Agency \$ Billed by Clinician

January	2009								Tot Units	% of Tot
	DA	Eval	AOD	IND	Group	CSP	MED	Other		
Unit Rate	\$ 129.99	\$ 129.99	\$ 96.24	\$ 90	\$ 39.48	\$ 65	\$ 195	\$ 35		
Dean Bachelor	0.00	0.00	0.00	5.00	60.00	0.30	0.00	0.00		
	\$0	\$0	\$0	\$450	\$2,369	\$20	\$0	\$0	\$ 2,838.30	1.77%
Kimberly Blair	1.50	13.00	0.00	47.20	0.00	17.00	0.00	0.00		
	\$194.99	\$1,689.87	\$0.00	\$4,248.00	\$0.00	\$1,105.00	\$0.00	\$0.00	\$ 7,237.86	4.51%
Misty Coleman	13.10	0.00	0.00	35.30	0.00	8.80	0.00	0.00		
	\$1,702.87	\$0.00	\$0.00	\$3,177.00	\$0.00	\$572.00	\$0.00	\$0.00	\$ 5,451.87	3.39%
Janet Crabtree	0.00	0.00	0.00	0.00	0.00	76.00	0.00	0.00		
	\$0.00	\$0.00	\$0.00	\$0.00	\$0.00	\$4,940.00	\$0.00	\$0.00	\$ 4,940.00	3.08%
Scott Craft	0.00	0.00	0.00	28.80	33.50	3.50	0.00	4.00		
	\$0.00	\$0.00	\$0.00	\$2,592.00	\$1,322.58	\$227.50	\$0.00	\$140.00	\$ 4,282.08	2.67%
Rachel Cranmer	9.30	0.00	0.00	27.80	0.00	2.60	0.00	0.00		
	\$1,208.91	\$0.00	\$0.00	\$2,502.00	\$0.00	\$169.00	\$0.00	\$0.00	\$ 3,879.91	2.42%
Jennifer DiBlasio	14.90	0.00	0.00	60.00	7.90	10.50	0.00	0.00		
	\$1,936.85	\$0.00	\$0.00	\$5,400.00	\$311.89	\$682.50	\$0.00	\$0.00	\$ 8,331.24	5.19%
Daniel DiSalvo	0.00	0.00	0.00	0.00	0.00	0.00	5.00	0.00		
	\$0.00	\$0.00	\$0.00	\$0.00	\$0.00	\$0.00	\$975.00	\$0.00	\$ 975.00	0.61%
Joe Dunson	9.00	0.00	0.00	43.00	0.00	3.90	0.00	0.00		
	\$1,169.91	\$0.00	\$0.00	\$3,870.00	\$0.00	\$253.50	\$0.00	\$0.00	\$ 5,293.41	3.30%
Will Froilan	14.30	6.70	0.00	11.10	0.00	2.50	0.00	0.00		
	\$1,858.86	\$870.93	\$0.00	\$999.00	\$0.00	\$162.50	\$0.00	\$0.00	\$ 3,891.29	2.42%
Helka Gienapp	2.00	0.00	0.00	26.10	20.20	2.70	0.00	0.00		
	\$259.98	\$0.00	\$0.00	\$2,349.00	\$797.50	\$175.50	\$0.00	\$0.00	\$ 3,581.98	2.23%
Dan Goodwin	0.00	0.00	0.00	0.00	0.00	54.00	0.00	0.00		
	\$0.00	\$0.00	\$0.00	\$0.00	\$0.00	\$3,510.00	\$0.00	\$0.00	\$ 3,510.00	2.18%
Joni Grim	5.20	4.80	0.00	22.00	0.00	2.50	0.00	0.00		
	\$675.95	\$623.95	\$0.00	\$1,980.00	\$0.00	\$162.50	\$0.00	\$0.00	\$ 3,442.40	2.14%
Brad Hedges	0.00	11.40	0.00	0.00	0.00	0.00	0.00	0.00		
	\$0.00	\$1,481.89	\$0.00	\$0.00	\$0.00	\$0.00	\$0.00	\$0.00	\$ 1,481.89	0.92%
Stacy Ingraham	15.40	0.00	0.00	38.90	0.00	1.70	0.00	0.00		
	\$2,001.85	\$0.00	\$0.00	\$3,501.00	\$0.00	\$110.50	\$0.00	\$0.00	\$ 5,613.35	3.49%
Emily Joseph	10.50	0.00	0.00	33.20	0.00	2.90	0.00	0.00		
	\$1,364.90	\$0.00	\$0.00	\$2,988.00	\$0.00	\$188.50	\$0.00	\$0.00	\$ 4,541.40	2.83%
Amanda Martin	2.00	0.00	0.00	104.60	0.00	17.10	0.00	0.00		
	259.98	\$0.00	\$0.00	\$9,414.00	\$0.00	\$1,111.50	\$0.00	\$0.00	\$ 10,785.48	6.71%
Amynda Martin	8.00	0.00	0.00	9.30	0.00	0.30	0.00	18.00		
	\$1,039.92	\$0.00	\$0.00	\$837.00	\$0.00	\$19.50	\$0.00	\$630.00	\$ 2,526.42	1.57%
Jessica Mitchell	21.00	0.00	0.00	16.40	0.00	1.50	0.00	0.00		
	\$2,729.79	\$0.00	\$0.00	\$1,476.00	\$0.00	\$97.50	\$0.00	\$0.00	\$ 4,303.29	2.68%
Tricia Ostrander	19.30	0.00	0.00	42.00	0.00	0.80	0.00	0.00		
	\$2,508.81	\$0.00	\$0.00	\$3,780.00	\$0.00	\$52.00	\$0.00	\$0.00	\$ 6,340.81	3.95%
Robin Rippeth	0.00	19.10	0.00	4.30	0.00	1.70	0.00	0.00		
	\$0.00	\$2,482.81	\$0.00	\$387.00	\$0.00	\$110.50	\$0.00	\$0.00	\$ 2,980.31	1.86%
Kelly Roberts	17.90	0.20	0.00	38.60	0.00	2.70	0.00	0.00		
	\$2,326.82	\$26.00	\$0.00	\$3,474.00	\$0.00	\$175.50	\$0.00	\$0.00	\$ 6,002.32	3.74%
Claire Robitaille	25.60	0.00	0.00	27.80	0.00	1.00	0.00	0.00		
	\$3,327.74	\$0.00	\$0.00	\$2,502.00	\$0.00	\$65.00	\$0.00	\$0.00	\$ 5,894.74	3.67%
Allisha Rone	0.00	0.00	0.00	9.30	0.00	0.00	0.00	0.00		
	\$0.00	\$0.00	\$0.00	\$837.00	\$0.00	\$0.00	\$0.00	\$0.00	\$ 837.00	0.52%
Jennifer Schwind	14.90	0.00	0.00	63.50	0.00	2.30	0.00	0.00		
	\$1,936.85	\$0.00	\$0.00	\$5,715.00	\$0.00	\$149.50	\$0.00	\$0.00	\$ 7,801.35	4.86%
Mike Selegue	8.00	0.00	0.00	67.40	0.00	1.50	0.00	0.00		
	\$1,039.92	\$0.00	\$0.00	\$6,066.00	\$0.00	\$97.50	\$0.00	\$0.00	\$ 7,203.42	4.48%
Samantha Skoczylas	19.20	4.90	0.00	23.90	0.00	0.00	0.00	0.00		
	\$2,495.81	\$636.95	\$0.00	\$2,151.00	\$0.00	\$0.00	\$0.00	\$0.00	\$ 5,283.76	3.29%
Sonya Slater	2.00	0.00	0.00	6.50	0.00	0.20	0.00	0.00		
	\$259.98	\$0.00	\$0.00	\$585.00	\$0.00	\$13.00	\$0.00	\$0.00	\$ 857.98	0.53%
Sheridan Smith	0.00	0.00	0.00	0.00	0.00	0.00	42.80	0.00		
	\$0.00	\$0.00	\$0.00	\$0.00	\$0.00	\$0.00	\$8,346.00	\$0.00	\$ 8,346.00	5.20%
Heather Stevens	9.30	0.00	0.00	51.30	36.80	7.60	0.00	0.00		
	\$1,208.91	\$0.00	\$0.00	\$4,617.00	\$1,452.86	\$494.00	\$0.00	\$0.00	\$ 7,772.77	4.84%
Cara Sussman	0.00	0.00	0.00	26.60	0.00	0.70	0.00	0.00		
	\$0.00	\$0.00	\$0.00	\$2,394.00	\$0.00	\$45.50	\$0.00	\$0.00	\$ 2,439.50	1.52%
Caleb Tipple	0.00	0.00	0.00	0.00	0.00	80.10	0.00	0.00		
	\$0.00	\$0.00	\$0.00	\$0.00	\$0.00	\$5,206.50	\$0.00	\$0.00	\$ 5,206.50	3.24%
Miranda Zircher	7.00	0.00	0.00	60.50	0.00	6.40	0.00	0.00		
	\$909.93	\$0.00	\$0.00	\$5,445.00	\$0.00	\$416.00	\$0.00	\$0.00	\$ 6,770.93	4.21%
Sum Totals	\$32,419.51	\$6,525.50	\$0.00	\$82,899.00	\$5,941.74	\$15,279.50	\$9,321.00	\$770.00	\$ 160,644.54	

This chart represents the percentage of the total dollars billed by clinician in November 2008.