

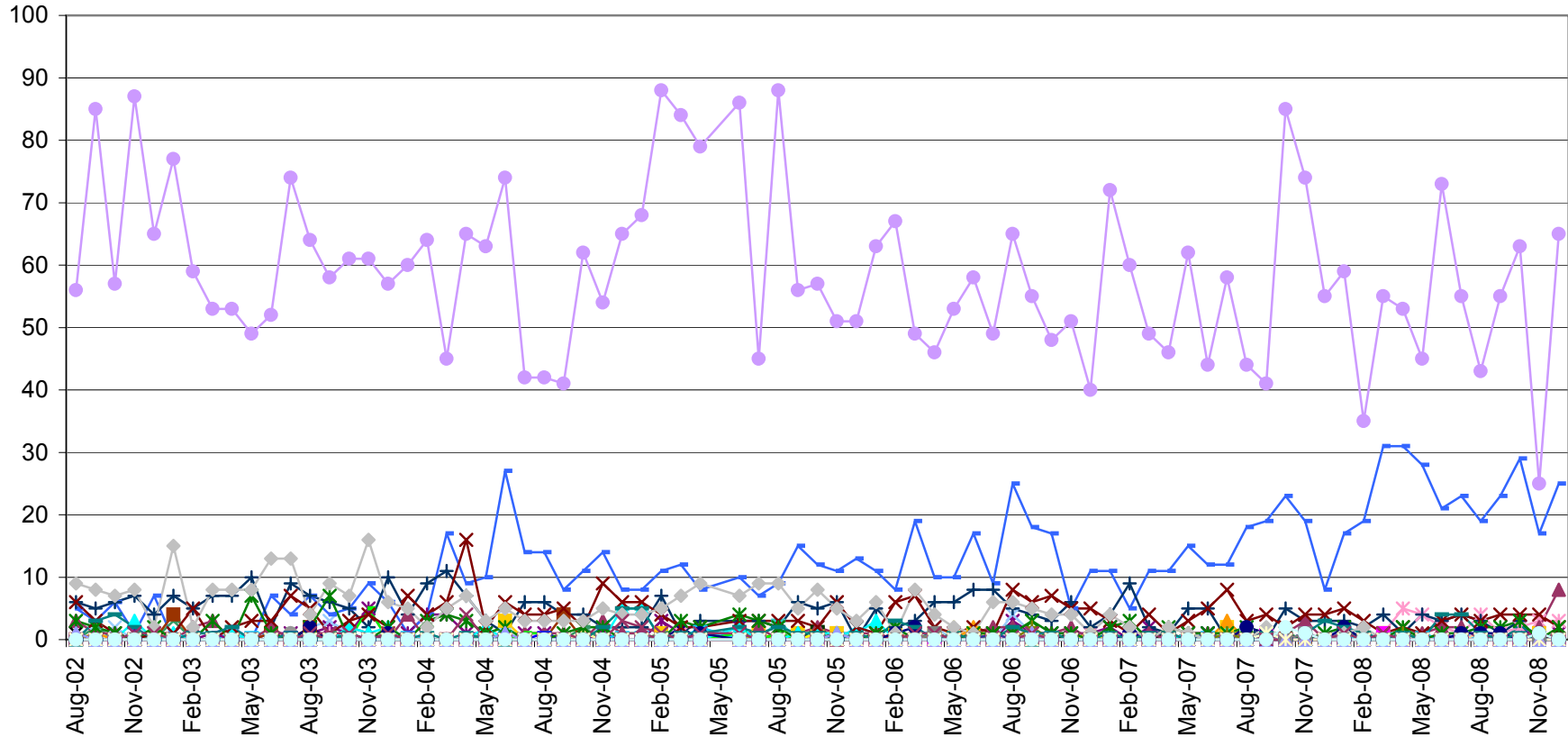
**DECEMBER 2008**

**UTILIZATION REVIEW**

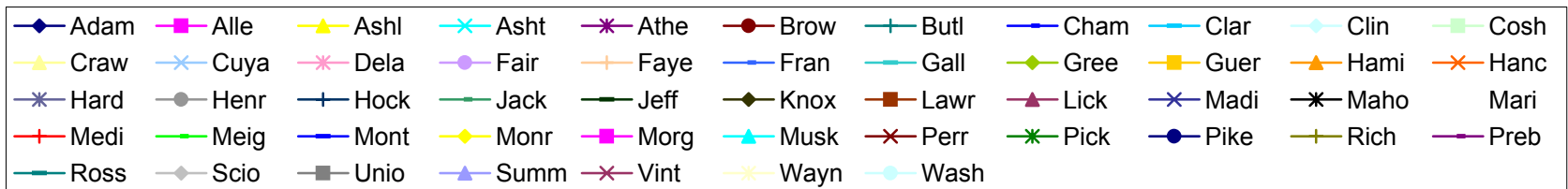
<b>Clinician</b>	<b>Number of Clients Assigned</b>	<b>Number of Clients Seen</b>	<b>Number of Services Rendered</b>	<b>Average Number of Contacts Per Client Seen</b>
Dean Bachelor, M.Div.	20	12	24	2.00
Kimberly Blair, M.A., PC	80	31	77	2.48
Misty Coleman, MSW, LISW	72	32	91	2.84
Janet Crabtree, BA, CT	25	18	77	4.28
Scott Craft, Ph.D.	73	25	70	2.80
Rachel Cranmer, MA, PC	31	19	41	2.16
Jennifer DiBlasio, MA	93	39	99	2.54
Daniel DiSalvo, CNP	20	13	15	1.15
Joe Dunson, M.Ed., PC	141	37	52	1.41
Will Froilan, MA	38	17	37	2.18
Helka Gienapp, B.A.	52	17	65	3.82
Dan Goodwin, BA, LSW	20	16	86	5.38
Joni Grim, Ph.D., PCC	66	13	27	2.08
Brad Hedges, Ph.D., PCC	56	7	8	1.14
Stacy Ingraham, BA	84	36	79	2.19
Emily Joseph, BA	23	16	41	2.56
Amanda Martin, M.Ed. PC	67	33	119	3.61
Amynda Martin, PsyD	37	8	15	1.88
Jessica Mitchell, MA, PC	102	23	39	1.70
Tricia Ostrander, Ph.D.	89	34	65	1.91
Robin Rippeth Ph.D., PCC	56	5	9	1.80
Kelly Roberts, MA	32	23	46	2.00
Claire Robitaille, M.S., LSW	48	27	61	2.26
Allisha Rone, BA	5	4	8	2.00
Jennifer Schwind, M.A.	115	33	58	1.76
Mike Selegue, MSW, LISW	132	50	74	1.48
Samantha Skoczylas, MA	39	19	29	1.53
Sonya Slater, PsyD	32	6	14	2.33
Sheridan Smith, M.D.	70	73	77	1.05
Heather Stevens, MSW, LSW	77	31	102	3.29
Cara Sussman, B.A.	27	15	44	2.93
Caleb Tipple, B.S.	25	33	119	3.61
Miranda Zircher, MS, PC	116	37	78	2.11
<b>Average</b>	<b>59.48</b>	<b>24.30</b>	<b>55.94</b>	<b>2.31</b>

The No Show rate for December was 22%. When considering both the no show rate and the cancellation rate, this figure is 36%.

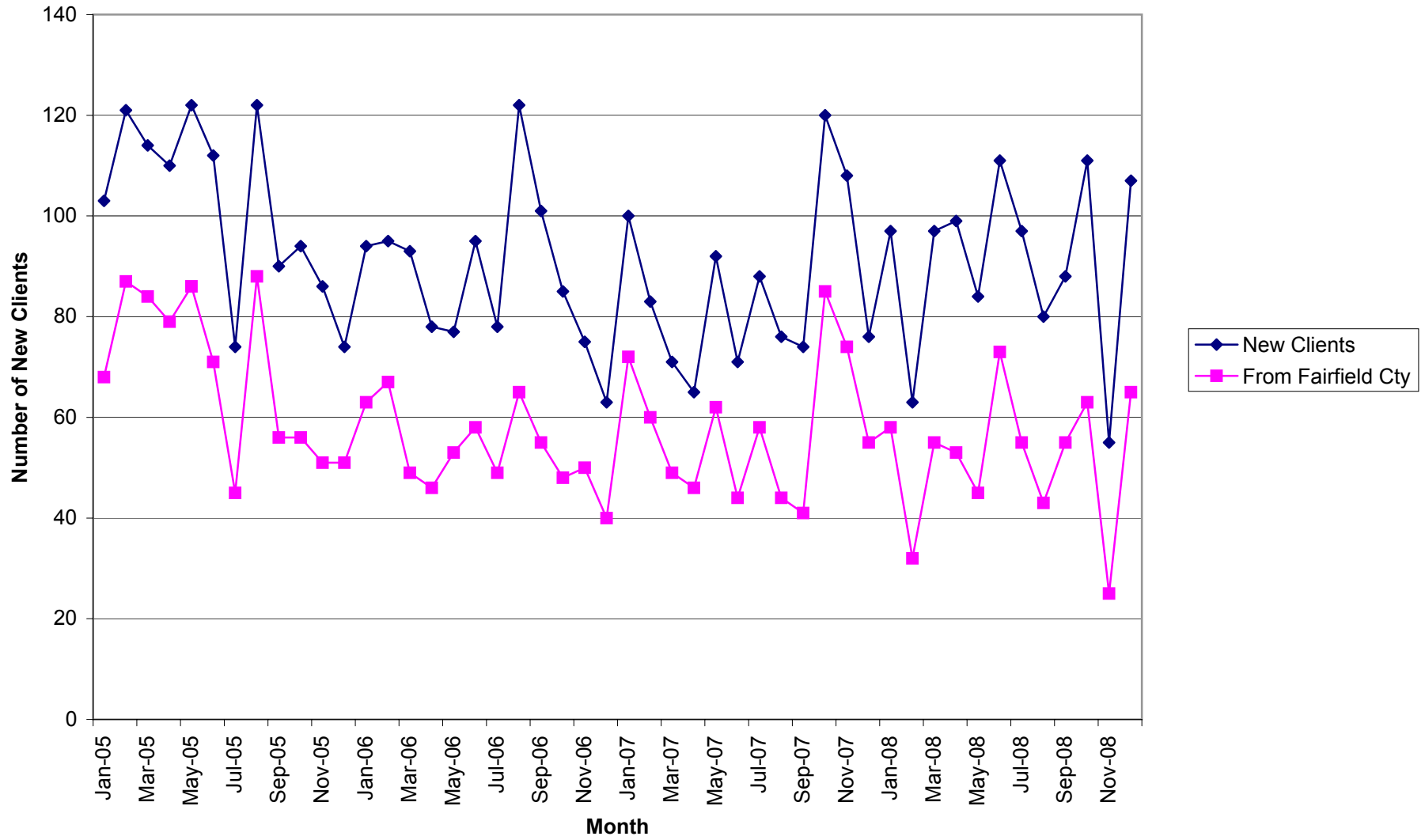
## Number of Intakes by County



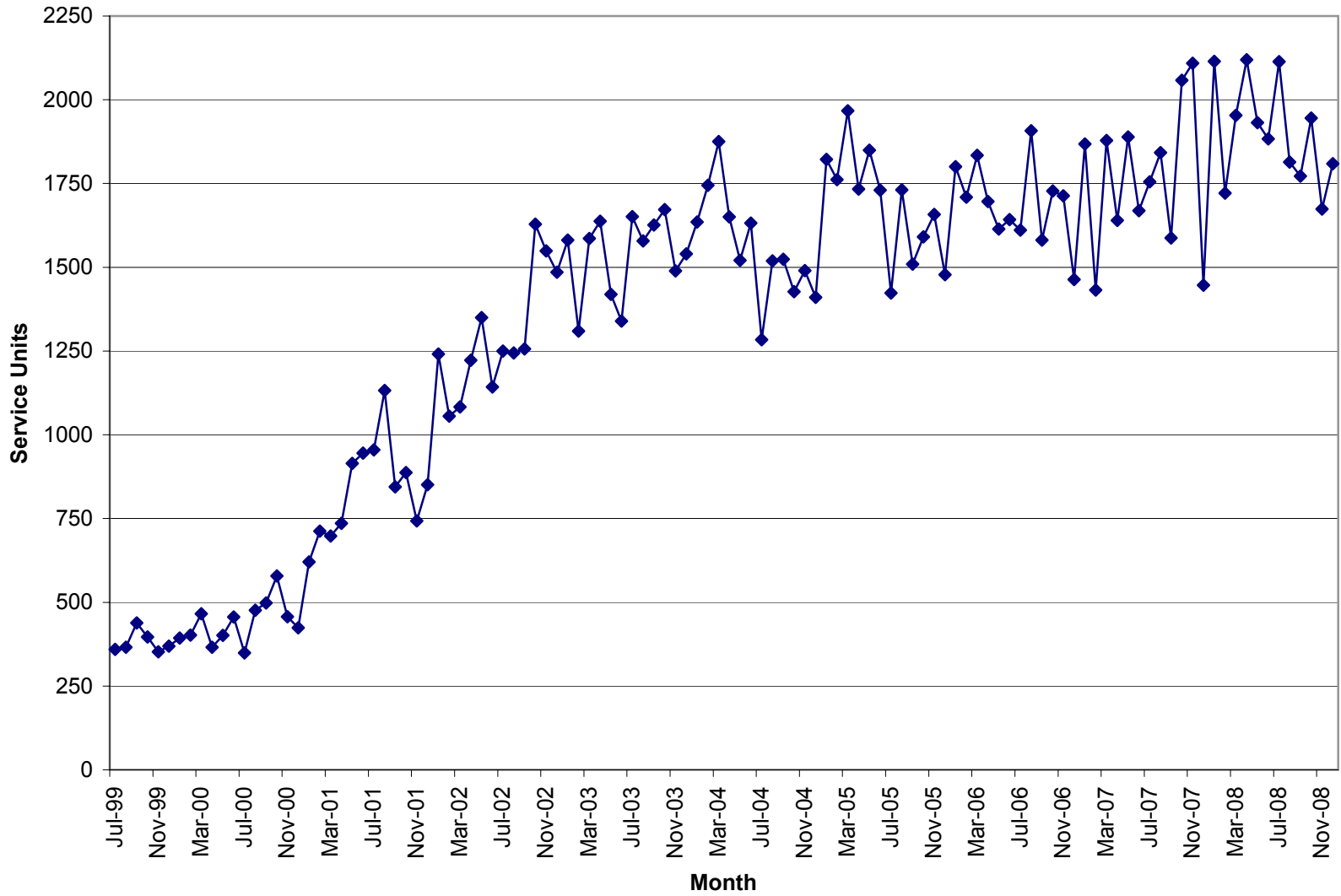
**Prior to 9/05 the numbers reported were somewhat inflated due to a report issue that has been corrected.**



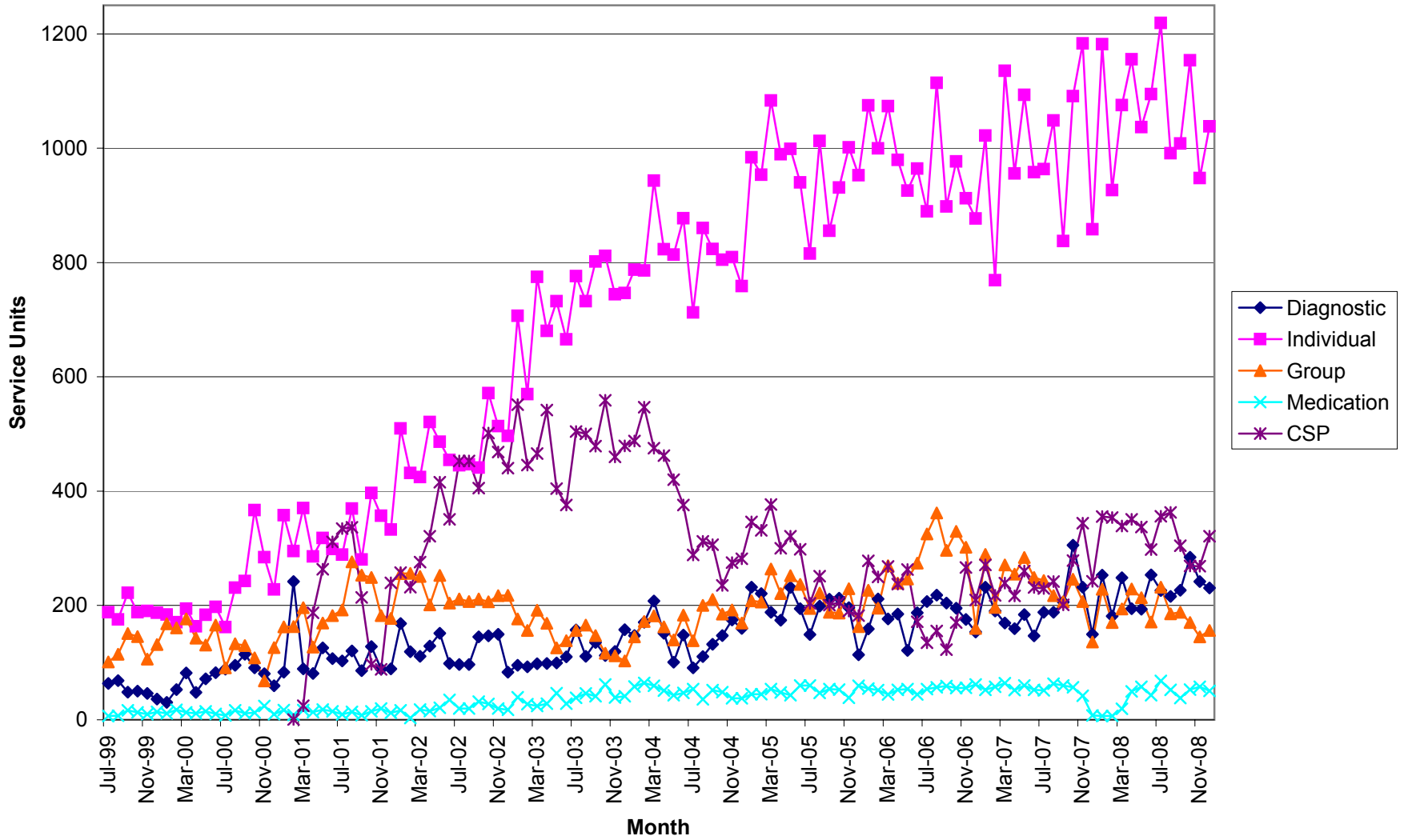
### New Clients



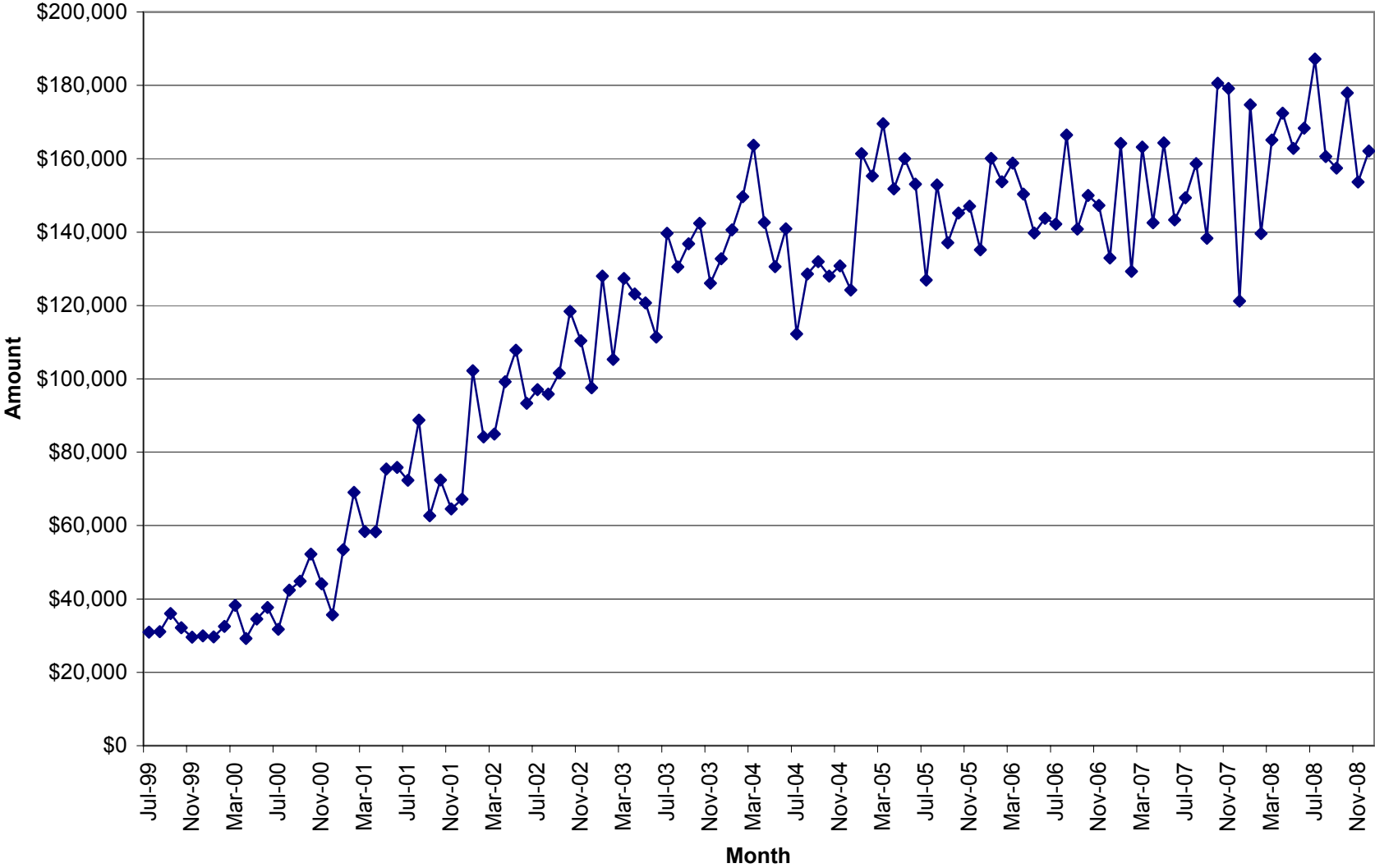
### Total Units of Service



# Units of Service



### Total Units \$



**Unit Production & Scheduling Proficiency by Clinician  
Mid Ohio Psychological Services**

December 2008

	Cancellations	Missed	Diagnostics	Evaluations	AOD Assessments	Individual	Group	Community Support	Medication	Other Units	Total Units	Billable Units	Units Billed+ Missed	Schedule Proficiency	% Canceled	% Missed	Lost Units due to C & M	% of Total Billable Units
<b>Unit Rate</b>			<b>129.99</b>	<b>129.99</b>	<b>96.24</b>	<b>90</b>	<b>39.48</b>	<b>65</b>	<b>195</b>	<b>35</b>								
Dean Bachelor	0	7	2.00	0.00	0.00	6.00	34.00	0.00	0.0		49.00	42.00	49.00	86%	0%	14%	14%	2.32%
Kimberly Blair	32	10	4.00	4.50	0.00	57.80	0.00	8.40	0.0		116.70	74.70	84.70	64%	27%	9%	36%	4.13%
Misty Coleman	18	28	4.00	0.00	0.00	52.40	26.00	6.50	0.0		134.90	88.90	116.90	66%	13%	21%	34%	4.91%
Janet Crabtree	0	0	0.00	0.00	0.00	0.00	0.00	80.00	0.0		80.00	80.00	80.00					4.42%
Scott Craft	10	10	2.30	0.00	0.00	35.90	30.00	1.40	0.0	4.0	93.60	73.60	83.60	79%	11%	11%	21%	4.07%
Rachel Cramner	11	13	5.70	0.00	0.00	38.50	0.00	0.20	0.0		68.40	44.40	57.40	65%	16%	19%	35%	57.89%
Jennifer DiBlasio	29	31	13.10	0.00	0.00	70.50	7.00	4.50	0.0		155.10	95.10	126.10	61%	19%	20%	39%	5.26%
Daniel DiSalvo	6	11	0.00	0.00	0.00	0.00	0.00	0.00	7.6		24.60	7.60	18.60	31%	24%	45%	69%	0.42%
Joe Dunson	14	34	20.00	0.00	0.00	40.00	0.00	1.00	0.0		109.00	61.00	95.00	56%	13%	31%	44%	3.37%
Will Froilan	6	18	27.70	0.00	0.00	10.60	0.00	4.50	0.0		66.80	42.80	60.80	64%	9%	27%	36%	55.80%
Helka Gienapp	3	3	1.50	0.00	0.00	34.20	37.60	2.30	0.0		81.60	75.60	78.60	93%	4%	4%	7%	4.18%
Dan Goodwin*	0	0	0.00	0.00	0.00	0.00	0.00	72.20	0.0		72.20	72.20	72.20					3.99%
Joni Grim	7	10	7.30	0.00	0.00	15.40	0.00	1.40	0.0		41.10	24.10	34.10	59%	17%	24%	41%	1.33%
Brad Hedges	1	1	0.00	3.80	0.00	0.00	0.00	0.00	0.0		5.80	3.80	4.80	66%	17%	17%	34%	0.21%
Stacy Ingraham	15	21	13.10	0.00	0.00	62.60	0.00	1.10	0.0		112.80	76.80	97.80	68%	13%	19%	32%	4.24%
Emily Joseph	7	19	0.00	0.00	0.00	32.20	0.00	3.30	0.0		61.50	35.50	54.50	58%	11%	31%	42%	1.96%
Amanda Martin	14	29	0.00	0.00	0.00	104.70	0.00	17.30	0.0		165.00	122.00	151.00	74%	8%	18%	26%	6.74%
Amynda Martin	1	4	6.00	0.00	0.00	5.20	0.00	0.00	0.0	8.0	24.20	19.20	23.20	79%	4%	17%	21%	1.06%
Jessica Mitchell	23	13	2.50	0.00	0.00	31.30	0.00	1.50	0.0		71.30	35.30	48.30	50%	32%	18%	50%	1.95%
Tricia Ostrander	13	21	7.60	0.00	0.00	60.00	0.00	0.00	0.0		101.60	67.60	88.60	67%	13%	21%	33%	3.74%
Robin Rippeth	1	2	1.80	6.50	0.00	2.50	0.00	0.00	0.0		13.80	10.80	12.80	78%	7%	14%	22%	0.60%
Kelly Roberts	18	14	22.80	0.00	0.00	32.00	0.00	2.00	0.0		88.80	56.80	70.80	64%	20%	16%	36%	3.14%
Claire Robitaille	9	21	4.50	0.00	0.00	59.60	0.00	2.00	0.0		96.10	66.10	87.10	69%	9%	22%	31%	3.65%
Allisha Rone	0	6	0.00	0.00	0.00	7.80	0.00	0.30	0.0		14.10	8.10	14.10	57%	0%	43%	43%	0.45%
Jennifer Schwind	14	29	11.20	0.00	0.00	45.30	0.00	1.00	0.0		100.50	57.50	86.50	57%	14%	29%	43%	3.18%
Mike Selegue	21	33	11.00	0.00	0.00	59.30	0.50	0.30	0.0		125.10	71.10	104.10	57%	17%	26%	43%	3.93%
Samantha Skoczylas	7	15	18.30	0.00	0.00	12.90	0.00	0.00	0.0		53.20	31.20	46.20	59%	13%	28%	41%	1.72%
Sonya Slater	6	6	2.00	8.20	0.00	6.00	0.00	0.60	0.0		28.80	16.80	22.80	58%	21%	21%	42%	0.93%
Sheridan Smith	19	28	0.00	0.00	0.00	0.00	0.00	0.00	42.9		89.90	42.90	70.90	48%	21%	31%	52%	2.37%
Heather Stevens	13	21	8.60	0.00	0.00	57.60	21.00	6.90	0.0		128.10	94.10	115.10	73%	10%	16%	27%	5.20%
Cara Sussman	7.00	16.00	0.00	0.00	0.00	35.10	0.00	2.10	0.00		60.2	37.20	53.20	62%	12%	27%	38%	2.06%
Caleb Tipple	0.00	0.00	0.00	0.00	0.00	0.00	0.00	97.90	0.00		97.9	97.90	97.90					5.41%
Miranda Zircher	14	23	10.80	0.00	0.00	63.40	0.00	2.50	0.0		113.70	76.70	99.70	67%	12%	20%	33%	4.24%
<b>Sum Totals</b>	<b>339.00</b>	<b>497.00</b>	<b>207.80</b>	<b>23.00</b>	<b>0.00</b>	<b>1038.80</b>	<b>156.10</b>	<b>321.20</b>	<b>50.50</b>	<b>12.00</b>	<b>2645.40</b>	<b>1809.40</b>	<b>2306.40</b>					
<b>Average</b>														<b>64%</b>	<b>14%</b>	<b>22%</b>	<b>36%</b>	<b>6.39%</b>

\* These clinicians do not have a daily scheduler therefore their totals are not reported in the missed or cancelled sessions.

**% of Agency \$ Billed by Clinician**

November	2008								Tot Units	% of Tot
	DA	EVAL	AOD	IND	Group	CSP	MED	Other		
Unit Rate	\$ 129.99	\$ 129.99	\$ 96.24	\$ 90	\$ 39.48	\$ 65	\$ 195	\$ 35		
Dean Bachelor	2.00	0.00	0.00	6.00	34.00	0.00	0.00	0.00		
	\$260	\$0	\$0	\$540	\$1,342	\$0	\$0	\$0	\$ 2,142.30	1.33%
Kimberly Blair	4.00	4.50	0.00	57.80	0.00	8.40	0.00	0.00		
	\$519.96	\$584.96	\$0.00	\$5,202.00	\$0.00	\$546.00	\$0.00	\$0.00	\$ 6,852.92	4.26%
Misty Coleman	4.00	0.00	0.00	52.40	26.00	6.50	0.00	0.00		
	\$519.96	\$0.00	\$0.00	\$4,716.00	\$1,026.48	\$422.50	\$0.00	\$0.00	\$ 6,684.94	4.16%
Janet Crabtree	0.00	0.00	0.00	0.00	0.00	80.00	0.00	0.00		
	\$0.00	\$0.00	\$0.00	\$0.00	\$0.00	\$5,200.00	\$0.00	\$0.00	\$ 5,200.00	3.23%
Scott Craft	2.30	0.00	0.00	35.90	30.00	1.40	0.00	4.00		
	\$298.98	\$0.00	\$0.00	\$3,231.00	\$1,184.40	\$91.00	\$0.00	\$140.00	\$ 4,945.38	3.08%
Rachel Cranmer	5.70	0.00	0.00	38.50	0.00	0.20	0.00	0.00		
	\$740.94	\$0.00	\$0.00	\$3,465.00	\$0.00	\$13.00	\$0.00	\$0.00	\$ 4,218.94	2.62%
Jennifer DiBlasio	13.10	0.00	0.00	70.50	7.00	4.50	0.00	0.00		
	\$1,702.87	\$0.00	\$0.00	\$6,345.00	\$276.36	\$292.50	\$0.00	\$0.00	\$ 8,616.73	5.36%
Daniel DiSalvo	0.00	0.00	0.00	0.00	0.00	0.00	7.60	0.00		
	\$0.00	\$0.00	\$0.00	\$0.00	\$0.00	\$0.00	\$1,482.00	\$0.00	\$ 1,482.00	0.92%
Joe Dunson	20.00	0.00	0.00	40.00	0.00	1.00	0.00	0.00		
	\$2,599.80	\$0.00	\$0.00	\$3,600.00	\$0.00	\$65.00	\$0.00	\$0.00	\$ 6,264.80	3.90%
Will Froilan	27.70	0.00	0.00	10.60	0.00	4.50	0.00	0.00		
	\$3,600.72	\$0.00	\$0.00	\$954.00	\$0.00	\$292.50	\$0.00	\$0.00	\$ 4,847.22	3.01%
Helka Gienapp	1.50	0.00	0.00	34.20	37.60	2.30	0.00	0.00		
	\$194.99	\$0.00	\$0.00	\$3,078.00	\$1,484.45	\$149.50	\$0.00	\$0.00	\$ 4,906.93	3.05%
Dan Goodwin	0.00	0.00	0.00	0.00	0.00	72.20	0.00	0.00		
	\$0.00	\$0.00	\$0.00	\$0.00	\$0.00	\$4,693.00	\$0.00	\$0.00	\$ 4,693.00	2.92%
Joni Grim	7.30	0.00	0.00	15.40	0.00	1.40	0.00	0.00		
	\$948.93	\$0.00	\$0.00	\$1,386.00	\$0.00	\$91.00	\$0.00	\$0.00	\$ 2,425.93	1.51%
Brad Hedges	0.00	3.80	0.00	0.00	0.00	0.00	0.00	0.00		
	\$0.00	\$493.96	\$0.00	\$0.00	\$0.00	\$0.00	\$0.00	\$0.00	\$ 493.96	0.31%
Stacy Ingraham	13.10	0.00	0.00	62.60	0.00	1.10	0.00	0.00		
	\$1,702.87	\$0.00	\$0.00	\$5,634.00	\$0.00	\$71.50	\$0.00	\$0.00	\$ 7,408.37	4.61%
Emily Joseph	0.00	0.00	0.00	32.20	0.00	3.30	0.00	0.00		
	\$0.00	\$0.00	\$0.00	\$2,898.00	\$0.00	\$214.50	\$0.00	\$0.00	\$ 3,112.50	1.94%
Amanda Martin	0.00	0.00	0.00	104.70	0.00	17.30	0.00	0.00		
	0	\$0.00	\$0.00	\$9,423.00	\$0.00	\$1,124.50	\$0.00	\$0.00	\$ 10,547.50	6.56%
Amynda Martin	6.00	0.00	0.00	5.20	0.00	0.00	0.00	8.00		
	\$779.94	\$0.00	\$0.00	\$468.00	\$0.00	\$0.00	\$0.00	\$280.00	\$ 1,527.94	0.95%
Jessica Mitchell	2.50	0.00	0.00	31.30	0.00	1.50	0.00	0.00		
	\$324.98	\$0.00	\$0.00	\$2,817.00	\$0.00	\$97.50	\$0.00	\$0.00	\$ 3,239.48	2.01%
Tricia Ostrander	7.60	0.00	0.00	60.00	0.00	0.00	0.00	0.00		
	\$987.92	\$0.00	\$0.00	\$5,400.00	\$0.00	\$0.00	\$0.00	\$0.00	\$ 6,387.92	3.97%
Robin Rippeth	1.80	6.50	0.00	2.50	0.00	0.00	0.00	0.00		
	\$233.98	\$844.94	\$0.00	\$225.00	\$0.00	\$0.00	\$0.00	\$0.00	\$ 1,303.92	0.81%
Kelly Roberts	22.80	0.00	0.00	32.00	0.00	2.00	0.00	0.00		
	\$2,963.77	\$0.00	\$0.00	\$2,880.00	\$0.00	\$130.00	\$0.00	\$0.00	\$ 5,973.77	3.71%
Claire Robitaille	4.50	0.00	0.00	59.60	0.00	2.00	0.00	0.00		
	\$584.96	\$0.00	\$0.00	\$5,364.00	\$0.00	\$130.00	\$0.00	\$0.00	\$ 6,078.96	3.78%
Allisha Rone	0.00	0.00	0.00	7.80	0.00	0.30	0.00	0.00		
	\$0.00	\$0.00	\$0.00	\$702.00	\$0.00	\$19.50	\$0.00	\$0.00	\$ 721.50	0.45%
Jennifer Schwind	11.20	0.00	0.00	45.30	0.00	1.00	0.00	0.00		
	\$1,455.89	\$0.00	\$0.00	\$4,077.00	\$0.00	\$65.00	\$0.00	\$0.00	\$ 5,597.89	3.48%
Mike Selegue	11.00	0.00	0.00	59.30	0.50	0.30	0.00	0.00		
	\$1,429.89	\$0.00	\$0.00	\$5,337.00	\$19.74	\$19.50	\$0.00	\$0.00	\$ 6,806.13	4.23%
Samantha Skoczylas	18.30	0.00	0.00	12.90	0.00	0.00	0.00	0.00		
	\$2,378.82	\$0.00	\$0.00	\$1,161.00	\$0.00	\$0.00	\$0.00	\$0.00	\$ 3,539.82	2.20%
Sonya Slater	2.00	8.20	0.00	6.00	0.00	0.60	0.00	0.00		
	\$259.98	\$1,065.92	\$0.00	\$540.00	\$0.00	\$39.00	\$0.00	\$0.00	\$ 1,904.90	1.18%
Sheridan Smith	0.00	0.00	0.00	0.00	0.00	0.00	42.90	0.00		
	\$0.00	\$0.00	\$0.00	\$0.00	\$0.00	\$0.00	\$8,365.50	\$0.00	\$ 8,365.50	5.20%
Heather Stevens	8.60	0.00	0.00	57.60	21.00	6.90	0.00	0.00		
	\$1,117.91	\$0.00	\$0.00	\$5,184.00	\$829.08	\$448.50	\$0.00	\$0.00	\$ 7,579.49	4.71%
Cara Sussman	0.00	0.00	0.00	35.10	0.00	2.10	0.00	0.00		
	\$0.00	\$0.00	\$0.00	\$3,159.00	\$0.00	\$136.50	\$0.00	\$0.00	\$ 3,295.50	2.05%
Caleb Tipple	0.00	0.00	0.00	0.00	0.00	97.90	0.00	0.00		
	\$0.00	\$0.00	\$0.00	\$0.00	\$0.00	\$6,363.50	\$0.00	\$0.00	\$ 6,363.50	3.96%
Miranda Zircher	10.80	0.00	0.00	63.40	0.00	2.50	0.00	0.00		
	\$1,403.89	\$0.00	\$0.00	\$5,706.00	\$0.00	\$162.50	\$0.00	\$0.00	\$ 7,272.39	4.52%
<b>Sum Totals</b>	<b>\$27,011.92</b>	<b>\$2,989.77</b>	<b>\$0.00</b>	<b>\$92,790.00</b>	<b>\$5,886.47</b>	<b>\$15,725.50</b>	<b>\$9,847.50</b>	<b>\$420.00</b>	<b>\$ 160,802.02</b>	

This chart represents the percentage of the total dollars billed by clinician in November 2008.