

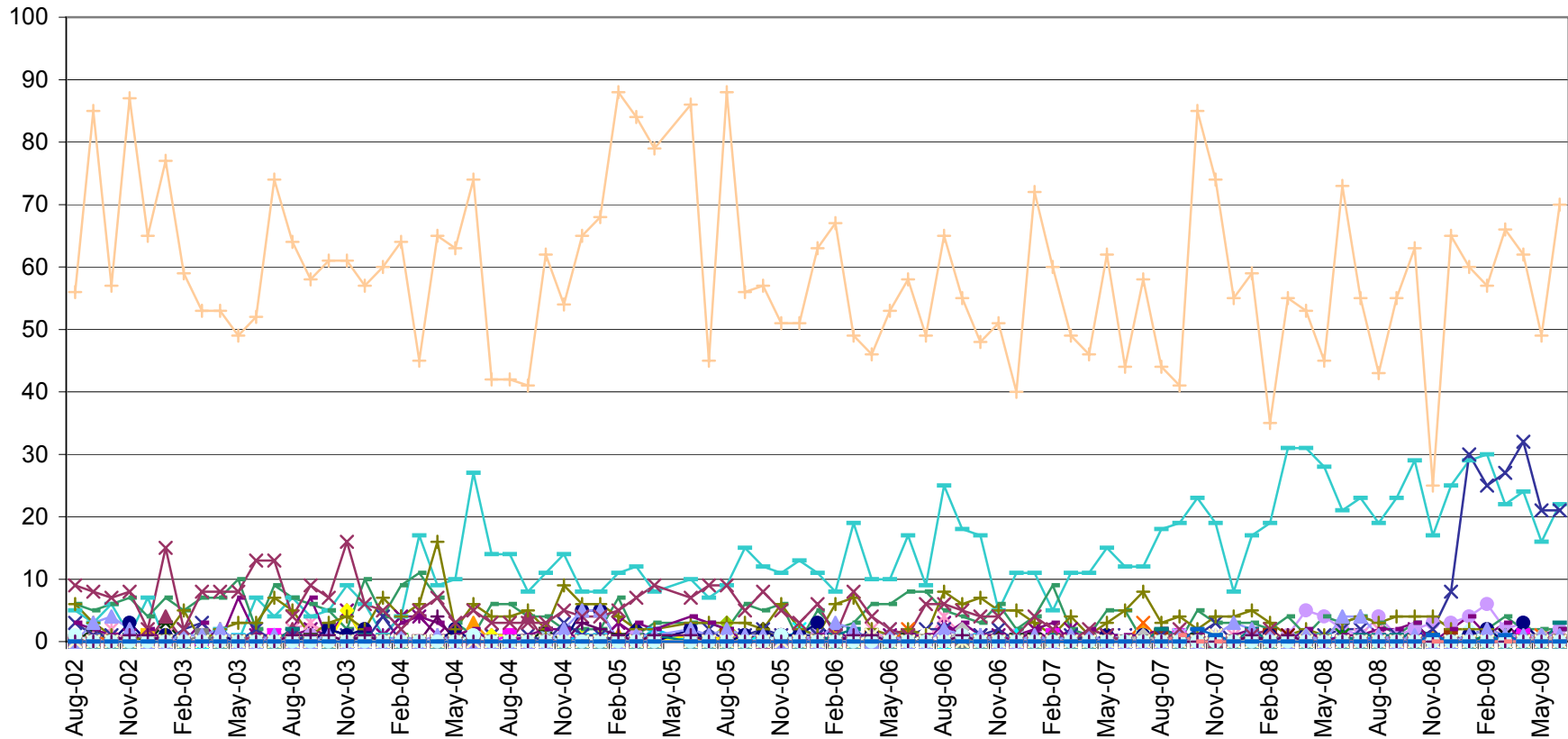
JUNE 2009

UTILIZATION REVIEW

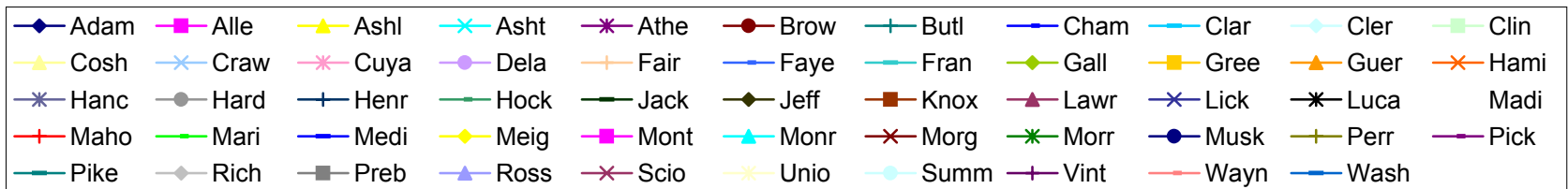
Clinician	Number of Clients Assigned	Number of Clients Seen	Number of Services Rendered	Average Number of Contacts Per Client Seen
Dean Bachelor, M.Div.	21	17	47	2.76
Kimberly Blair, M.A., PC	75	29	59	2.03
Misty Coleman, MSW, LISW	96	32	75	2.34
Janet Crabtree, BA, CT	17	30	101	3.37
Scott Craft, Ph.D.	56	24	51	2.13
Rachel Cranmer, MA, PC	54	29	62	2.13
Daniel DiSalvo, CNP	20	19	22	1.16
Joe Dunson, M.Ed., PC	142	45	76	1.69
Tricia Foster, Ph.D.	104	37	76	2.05
Will Froilan, MA	55	43	75	1.74
Helka Gienapp, B.A.	54	15	64	4.27
Dan Goodwin, BA, LSW	14	19	48	2.53
Jodie Grafmiller, BA	11	11	28	2.54
Brad Hedges, Ph.D., PCC	53	10	10	1.00
Stacy Ingraham, BA	114	46	92	2.00
Emily Joseph, BA	64	31	80	2.58
Joni Krzycki, Ph.D., PCC	68	15	34	2.27
Amanda Martin, M.Ed. PC	71	38	159	4.18
Amynda Martin, PsyD	74	13	27	2.08
Jessica Mitchell, MA, PC	114	15	43	2.87
Arianna Profato, BA	5	1	1	1.00
Robin Rippeth Ph.D., PCC	57	8	14	1.75
Kelly Roberts, MA	47	33	70	2.12
Claire Robitaille, M.S., LSW	75	26	63	2.42
Allisha Rone, BA	13	38	74	1.95
Jennifer Schwind, M.A.	132	44	82	1.86
Mike Selegue, MSW, LISW	128	67	126	1.88
Samantha Skoczylas, MA	61	34	85	2.50
Sonya Slater, PsyD	31	17	41	2.41
Beth Sleeper	45	38	74	1.95
Sheridan Smith, M.D.	80	79	93	1.18
Sarah Sohar, MA, PC	10	4	5	1.25
Heather Stevens, MSW, LSW	75	46	121	2.63
Cara Sussman, B.A.	35	34	88	2.59
Caleb Tipple, B.S.	13	30	80	2.67
Thomas Vajen	28	28	28	1.00
Miranda Zircher, MS, PC	112	38	114	3.00
Average	60.11	29.27	64.54	2.21

The No Show rate for June was 21%. When considering both the no show rate and the cancellation rate, this figure is 34%.

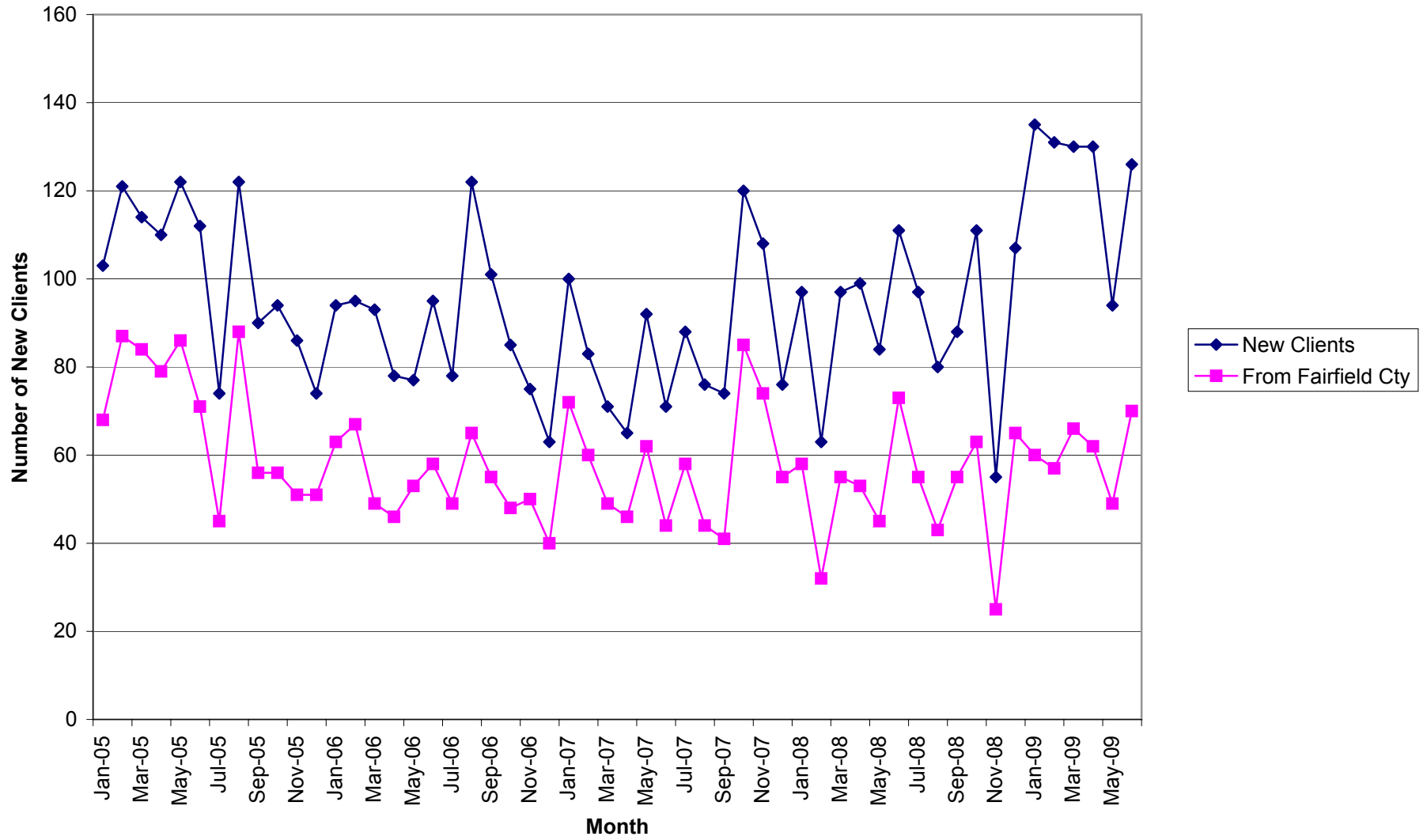
Number of Intakes by County



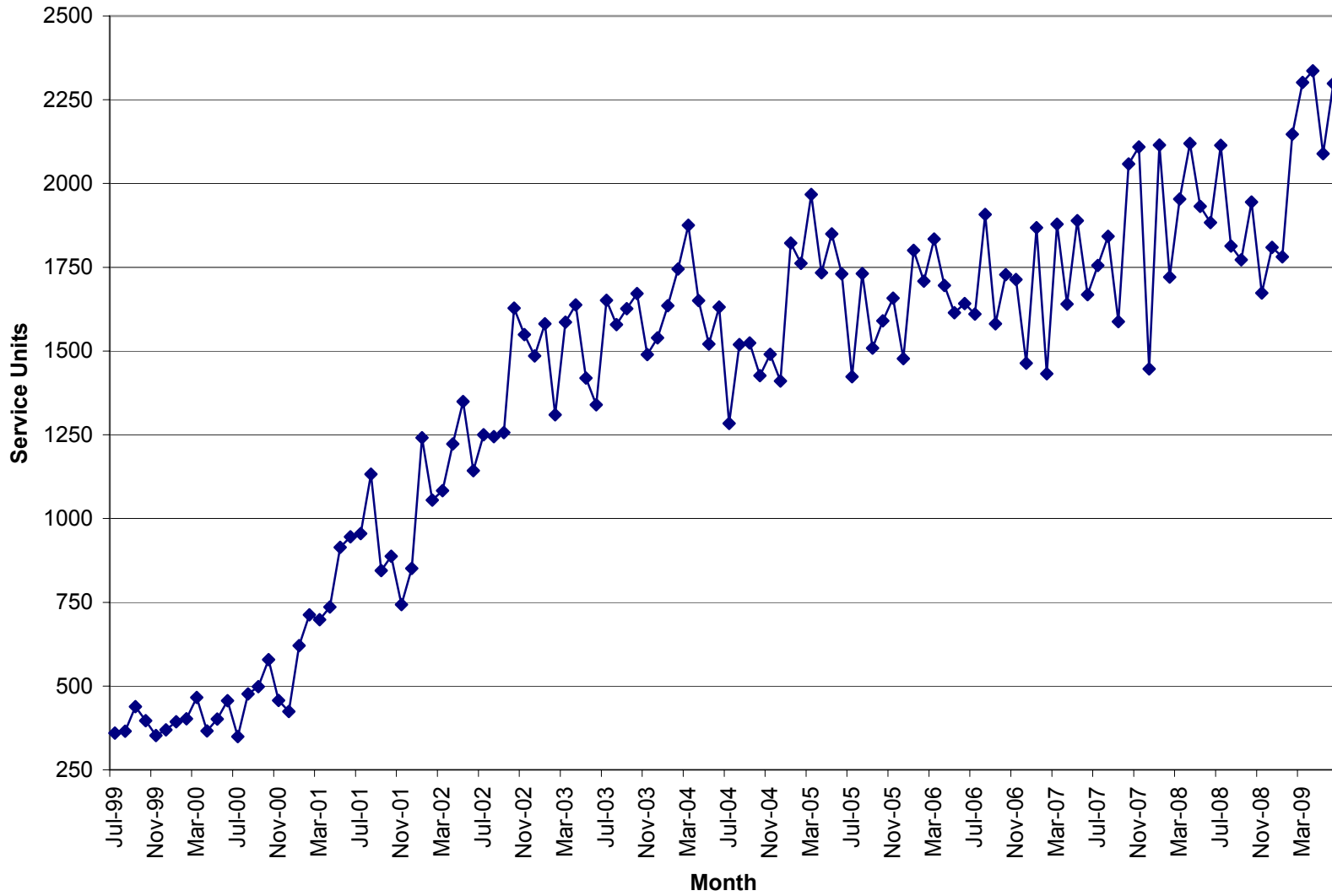
Prior to 9/05 the numbers reported were somewhat inflated due to a report issue that has been corrected.



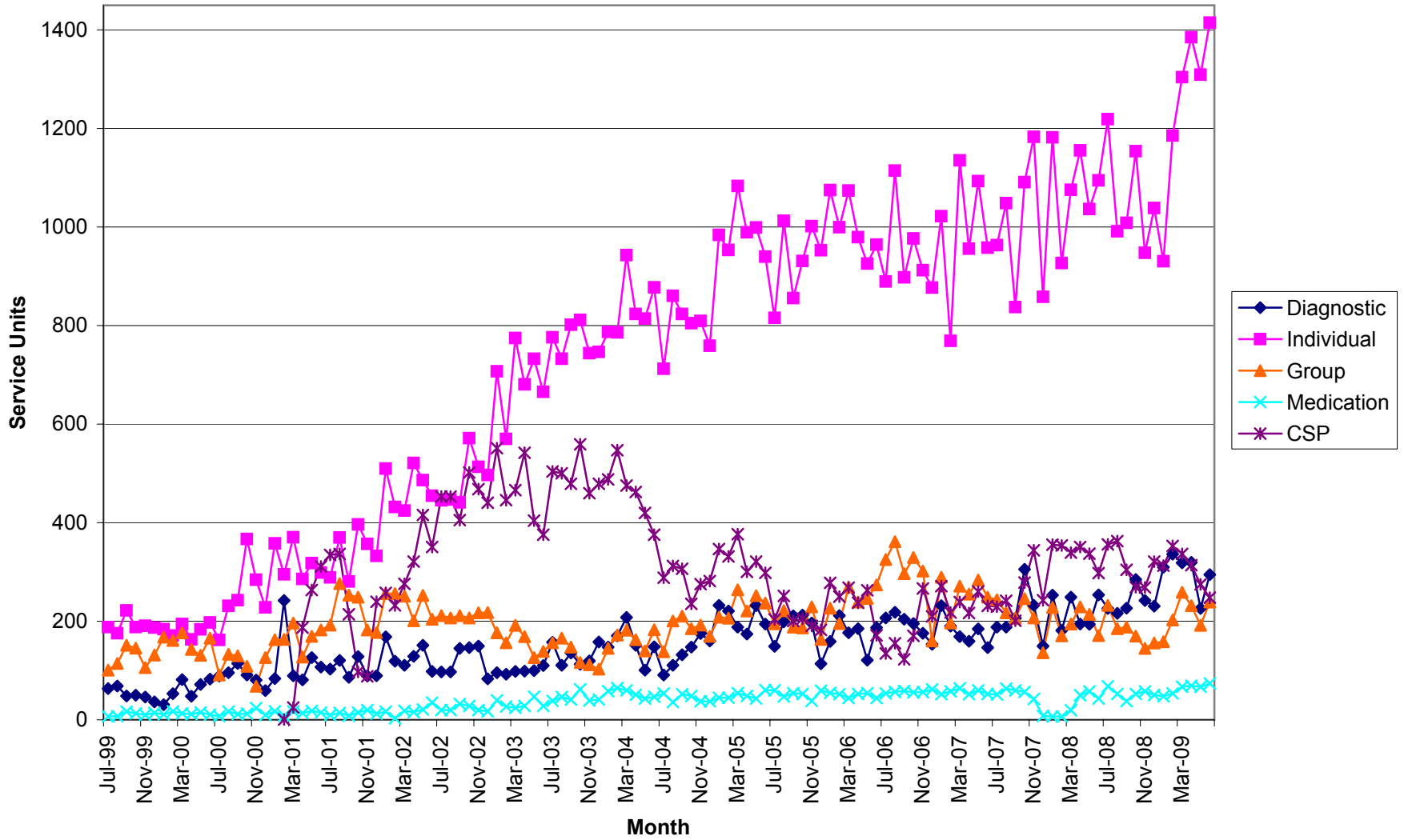
New Clients



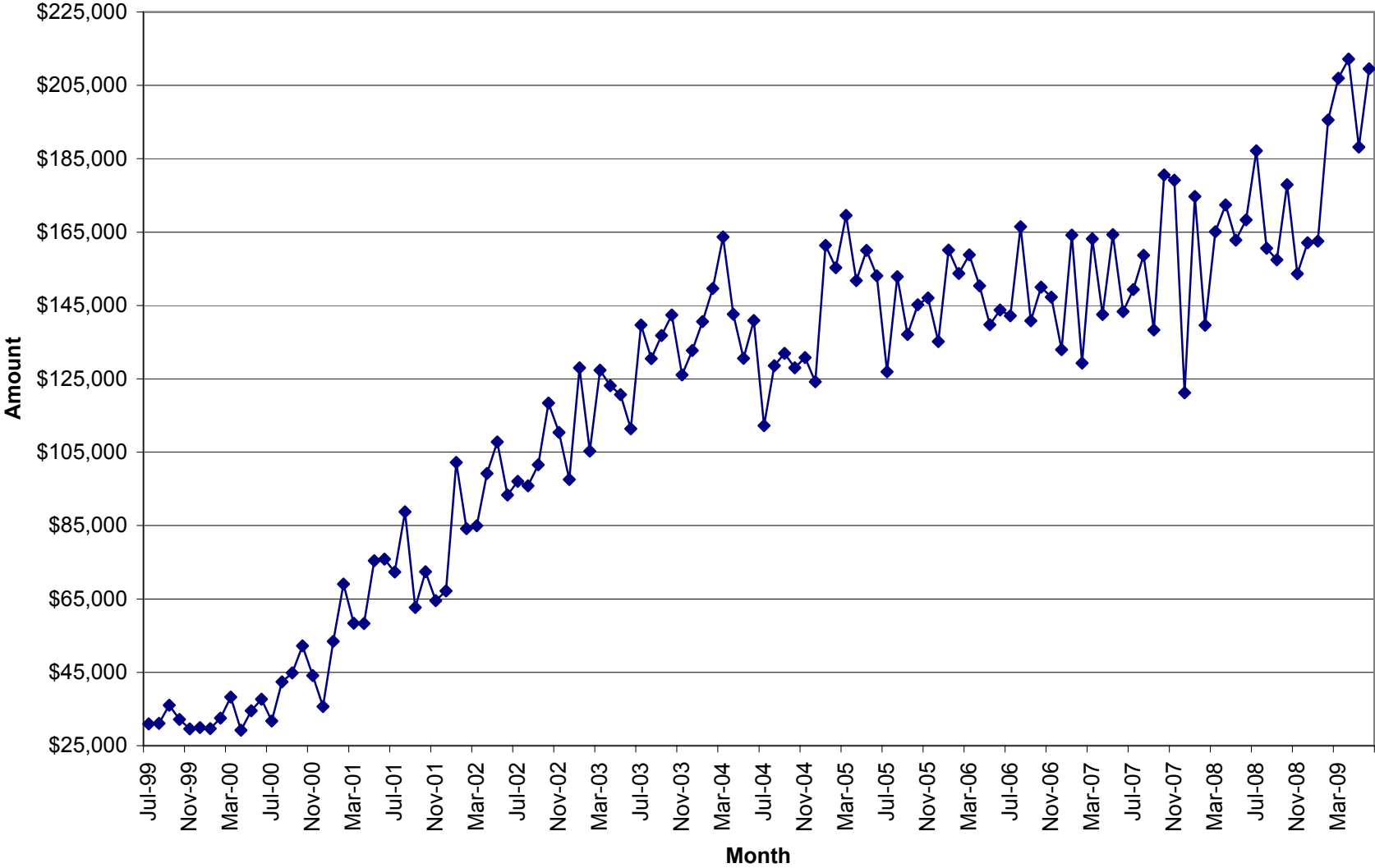
Total Units of Service



Units of Service



Total Units \$



June 2009

Unit Production & Scheduling Proficiency by Clinician
Mid Ohio Psychological Services

	Cancellations	Missed	Diagnostics	Evaluations	AOD Assessments	Individual	Group	Community Support	Medication	Other Units	Total Units	Billable Units	Units Billed+ Missed	Schedule Proficiency	% Canceled	% Missed	Lost Units due to C & M	% of Total Billable Units	High Scheduling Proficiency	Significantly Low Scheduling Proficiency
Unit Rate			129.99	129.99	96.24	90	39.48	65	195	35										
Dean Bachelor	3	7	2.00	0.00	0.00	11.00	70.00	0.00	0.0		93.00	83.00	90.00	92%	3%	8%	11%	3.61%	Yes	No
Kimberly Blair	19	8	0.00	9.50	0.00	37.80	0.00	8.40	0.0		82.70	55.70	63.70	67%	23%	10%	33%	2.42%	No	No
Misty Coleman	45	22	11.00	0.00	0.00	61.90	0.00	2.70	0.0		142.60	75.60	97.60	53%	32%	15%	47%	3.29%	No	Yes
Janet Crabtree	0	0	0.00	0.00	0.00	0.00	0.00	101.80	0.0		101.80	101.80	101.80					4.43%		
Scott Craft	9	17	1.00	0.00	0.00	32.80	13.80	0.50	0.0	3.0				66%	12%	22%	34%	2.22%	No	No
Rachel Cramner	12	27	3.00	0.00	0.00	46.70	0.00	2.70	0.0		91.40	52.40	79.40	57%	13%	30%	43%	2.28%	No	No
Daniel DiSalvo	2	10	0.00	0.00	0.00	0.00	0.00	0.00	11.4		23.40	11.40	21.40	49%	9%	43%	51%	0.50%	No	Yes
Joe Dunson	22	22	18.00	1.00	0.00	61.00	0.00	0.60	0.0		124.60	80.60	102.60	65%	18%	18%	35%	3.51%	No	No
Tricia Foster	26	15	16.10	0.00	0.00	66.10	0.00	0.00	0.0		123.20	82.20	97.20	67%	21%	12%	33%	3.58%	No	No
Will Froilan	28	19	21.40	0.00	0.00	54.70	0.00	1.20	0.0		124.30	77.30	96.30	62%	23%	15%	38%	3.36%	No	No
Helka Gienapp	17	9	2.80	0.00	0.00	32.10	37.30	5.70	0.0		103.90	77.90	86.90	75%	16%	9%	25%	3.39%	No	No
Dan Goodwin*	0	0	0.00	0.00	0.00	0.00	0.00	0.00	0.0		0.00	0.00	0.00					0.00%		
Jodi Grafmiller	10	7	0.00	0.00	0.00	26.70	0.00	0.30	0.0		44.00	27.00	34.00	61%	23%	16%	39%	1.17%	No	No
Brad Hedges	1	0	0.00	4.50	0.00	4.00	0.00	0.50	0.0		10.00	9.00	9.00	90%	10%	0%	10%	0.39%	Yes	No
Stacy Ingraham	12	35	13.90	0.00	0.00	78.30	0.00	1.50	0.0		140.70	93.70	128.70	67%	9%	25%	33%	4.08%	No	No
Emily Joseph	18	30	10.50	0.00	0.00	52.50	0.00	5.30	0.0		116.30	68.30	98.30	59%	15%	26%	41%	2.97%	No	No
Joni Krzycki	6	8	3.10	0.00	0.00	23.60	0.00	2.00	0.0		42.70	28.70	36.70	67%	14%	19%	33%	1.25%	No	No
Amanda Martin	18	17	5.00	0.00	0.00	134.10	0.00	10.10	0.0		184.20	149.20	166.20	81%	10%	9%	19%	6.49%	Yes	No
Amynda Martin	0	6	8.30	0.00	0.00	7.30	0.00	0.70	0.0	14.2	36.50	30.50	36.50	84%	0%	16%	16%	1.33%	Yes	No
Jessica Mitchell	15	5	3.00	0.00	0.00	40.50	0.00	0.70	0.0		64.20	44.20	49.20	69%	23%	8%	31%	1.92%	No	No
Arianna Profato	0	4	0.00	0.00	0.00	1.00	0.00	0.00	0.0		5.00	1.00	5.00	20%	0%	80%	80%	0.04%	No	Yes
Robin Rippeth	4	4	0.00	17.80	0.00	1.00	0.00	2.40	0.0		29.20	21.20	25.20	73%	14%	14%	27%	0.92%	No	No
Kelly Roberts	11	21	30.50	0.00	0.00	44.40	0.00	2.40	0.0		109.30	77.30	98.30	71%	10%	19%	29%	3.36%	No	No
Claire Robitaille	26	18	15.60	0.00	0.00	47.90	0.00	2.00	0.0		109.50	65.50	83.50	60%	24%	16%	40%	2.85%	No	No
Allisha Rone	10	27	1.00	0.00	0.00	63.40	0.00	0.80	0.0		102.20	65.20	92.20	64%	10%	26%	36%	2.84%	No	No
Jennifer Schwind	23	44	15.20	0.00	0.00	56.60	0.00	2.20	0.0		141.00	74.00	118.00	52%	16%	31%	48%	3.22%	No	Yes
Mike Selegue	26	40	13.00	0.00	0.00	92.20	10.00	4.10	0.0		185.30	119.30	159.30	64%	14%	22%	36%	5.19%	No	No
Samantha Skoczylas	16	31	9.40	0.00	0.00	34.60	36.00	3.60	0.0		130.60	83.60	114.60	64%	12%	24%	36%	3.64%	No	No
Sonya Slater	4	10	7.40	4.00	0.00	29.40	0.00	1.00	0.0		55.80	41.80	51.80	75%	7%	18%	25%	1.82%	No	No
Beth Sleeper	14	45	13.90	0.00	0.00	55.50	0.00	2.90	0.0		131.30	72.30	117.30	55%	11%	34%	45%	3.15%	No	No
Sheridan Smith	32	21	0.00	0.00	0.00	0.00	0.00	0.00	49.1		102.10	49.10	70.10	48%	31%	21%	52%	2.14%	No	Yes
Sarah Sohar	2	4	8.90	0.00	0.00	0.00	0.00	0.00	0.0		14.90	8.90	12.90	60%	13%	27%	40%	0.39%	No	No
Heather Stevens	24	30	8.00	0.00	0.00	76.50	36.00	5.00	0.0		179.50	125.50	155.50	70%	13%	17%	30%	5.46%	No	No
Cara Sussman	13.00	24.00	24.30	0.00	0.00	65.80	0.00	6.10	0.00		133.2	96.20	120.20	72%	10%	18%	28%	4.18%	No	No
Caleb Tipple	0.00	0.00	0.00	0.00	0.00	0.00	0.00	68.50	0.00		68.5	68.50	68.50					2.98%		
Thomas Vajen	5.00	6.00	0.00	0.00	0.00	0.00	0.00	0.00	13.40		24.4	13.40	19.40	55%	20%	25%	45%	0.58%	No	No
Miranda Zircher	18	32	2.80	0.00	0.00	75.50	36.00	2.10	0.0		166.40	116.40	148.40	70%	11%	19%	30%	5.06%	No	No
Sum Totals	491.00	625.00	269.10	36.80	0.00	1414.90	239.10	247.80	73.90	17.20	3414.80	2298.80	2923.80							
Average														65%	14%	21%	35%	2.70%		

* These clinicians do not have a daily scheduler therefore their totals are not reported in the missed or cancelled sessions.

% of Agency \$ Billed by Clinician

June	2009								Tot Units	% of Tot
	DA	EVAL	AOD	IND	Group	CSP	MED	Other		
Unit Rate	\$ 129.99	\$ 129.99	\$ 96.24	\$ 90	\$ 39.48	\$ 65	\$ 195	\$ 35		
Dean Bachelor	2.00	0.00	0.00	11.00	70.00	0.00	0.00	0.00		
	\$260	\$0	\$0	\$990	\$2,764	\$0	\$0	\$0	\$ 4,013.58	1.96%
Kimberly Blair	0.00	9.50	0.00	37.80	0.00	8.40	0.00	0.00		
	\$0.00	\$1,234.91	\$0.00	\$3,402.00	\$0.00	\$546.00	\$0.00	\$0.00	\$ 5,182.91	2.54%
Misty Coleman	11.00	0.00	0.00	61.90	0.00	2.70	0.00	0.00		
	\$1,429.89	\$0.00	\$0.00	\$5,571.00	\$0.00	\$175.50	\$0.00	\$0.00	\$ 7,176.39	3.51%
Janet Crabtree	0.00	0.00	0.00	0.00	0.00	101.80	0.00	0.00		
	\$0.00	\$0.00	\$0.00	\$0.00	\$0.00	\$6,617.00	\$0.00	\$0.00	\$ 6,617.00	3.24%
Scott Craft	1.00	0.00	0.00	32.80	13.80	0.50	0.00	3.00		
	\$129.99	\$0.00	\$0.00	\$2,952.00	\$544.82	\$32.50	\$0.00	\$105.00	\$ 3,764.31	1.84%
Rachel Cranmer	3.00	0.00	0.00	46.70	0.00	2.70	0.00	0.00		
	\$389.97	\$0.00	\$0.00	\$4,203.00	\$0.00	\$175.50	\$0.00	\$0.00	\$ 4,768.47	2.33%
Daniel DiSalvo	0.00	0.00	0.00	0.00	0.00	0.00	11.40	0.00		
	\$0.00	\$0.00	\$0.00	\$0.00	\$0.00	\$0.00	\$2,223.00	\$0.00	\$ 2,223.00	1.09%
Joe Dunson	18.00	1.00	0.00	61.00	0.00	0.60	0.00	0.00		
	\$2,339.82	\$129.99	\$0.00	\$5,490.00	\$0.00	\$39.00	\$0.00	\$0.00	\$ 7,998.81	3.91%
Tricia Foster	16.10	0.00	0.00	66.10	0.00	0.00	0.00	0.00		
	\$2,092.84	\$0.00	\$0.00	\$5,949.00	\$0.00	\$0.00	\$0.00	\$0.00	\$ 8,041.84	3.93%
Will Froilan	21.40	0.00	0.00	54.70	0.00	1.20	0.00	0.00		
	\$2,781.79	\$0.00	\$0.00	\$4,923.00	\$0.00	\$78.00	\$0.00	\$0.00	\$ 7,782.79	3.81%
Helka Gienapp	2.80	0.00	0.00	32.10	37.30	5.70	0.00	0.00		
	\$363.97	\$0.00	\$0.00	\$2,889.00	\$1,472.60	\$370.50	\$0.00	\$0.00	\$ 5,096.08	2.49%
Dan Goodwin	0.00	0.00	0.00	0.00	0.00	0.00	0.00	0.00		
	\$0.00	\$0.00	\$0.00	\$0.00	\$0.00	\$0.00	\$0.00	\$0.00	\$ -	0.00%
Jodie Grafmiller	0.00	0.00	0.00	26.70	0.00	0.30	0.00	0.00		
	\$0.00	\$0.00	\$0.00	\$2,403.00	\$0.00	\$19.50	\$0.00	\$0.00	\$ 2,422.50	1.19%
Brad Hedges	0.00	4.50	0.00	4.00	0.00	0.50	0.00	0.00		
	\$0.00	\$584.96	\$0.00	\$360.00	\$0.00	\$32.50	\$0.00	\$0.00	\$ 977.46	0.48%
Stacy Ingraham	13.90	0.00	0.00	78.30	0.00	1.50	0.00	0.00		
	\$1,806.86	\$0.00	\$0.00	\$7,047.00	\$0.00	\$97.50	\$0.00	\$0.00	\$ 8,951.36	4.38%
Emily Joseph	10.50	0.00	0.00	52.50	0.00	5.30	0.00	0.00		
	\$1,364.90	\$0.00	\$0.00	\$4,725.00	\$0.00	\$344.50	\$0.00	\$0.00	\$ 6,434.40	3.15%
Joni Krzycki	3.10	0.00	0.00	23.60	0.00	2.00	0.00	0.00		
	\$402.97	\$0.00	\$0.00	\$2,124.00	\$0.00	\$130.00	\$0.00	\$0.00	\$ 2,656.97	1.30%
Amanda Martin	5.00	0.00	0.00	134.10	0.00	10.10	0.00	0.00		
	\$49.95	\$0.00	\$0.00	\$12,069.00	\$0.00	\$656.50	\$0.00	\$0.00	\$ 13,375.45	6.54%
Amynda Martin	8.30	0.00	0.00	7.30	0.00	0.70	0.00	14.20		
	\$1,078.92	\$0.00	\$0.00	\$657.00	\$0.00	\$45.50	\$0.00	\$497.00	\$ 2,278.42	1.11%
Jessica Mitchell	3.00	0.00	0.00	40.50	0.00	0.70	0.00	0.00		
	\$389.97	\$0.00	\$0.00	\$3,645.00	\$0.00	\$45.50	\$0.00	\$0.00	\$ 4,080.47	2.00%
Arianna Profato	0.00	0.00	0.00	1.00	0.00	0.00	0.00	0.00		
	\$0.00	\$0.00	\$0.00	\$90.00	\$0.00	\$0.00	\$0.00	\$0.00	\$ 90.00	0.04%
Robin Rippeth	0.00	17.80	0.00	1.00	0.00	2.40	0.00	0.00		
	\$0.00	\$2,313.82	\$0.00	\$90.00	\$0.00	\$156.00	\$0.00	\$0.00	\$ 2,559.82	1.25%
Kelly Roberts	30.50	0.00	0.00	44.40	0.00	2.40	0.00	0.00		
	\$3,964.70	\$0.00	\$0.00	\$3,996.00	\$0.00	\$156.00	\$0.00	\$0.00	\$ 8,116.70	3.97%
Claire Robitaille	15.60	0.00	0.00	47.90	0.00	2.00	0.00	0.00		
	\$2,027.84	\$0.00	\$0.00	\$4,311.00	\$0.00	\$130.00	\$0.00	\$0.00	\$ 6,468.84	3.16%
Allisha Rone	1.00	0.00	0.00	63.40	0.00	0.80	0.00	0.00		
	\$129.99	\$0.00	\$0.00	\$5,706.00	\$0.00	\$52.00	\$0.00	\$0.00	\$ 5,887.99	2.88%
Jennifer Schwind	15.20	0.00	0.00	56.60	0.00	2.20	0.00	0.00		
	\$1,975.85	\$0.00	\$0.00	\$5,094.00	\$0.00	\$143.00	\$0.00	\$0.00	\$ 7,212.85	3.53%
Mike Selegue	13.00	0.00	0.00	92.20	10.00	4.10	0.00	0.00		
	\$1,689.87	\$0.00	\$0.00	\$8,298.00	\$394.80	\$266.50	\$0.00	\$0.00	\$ 10,649.17	5.21%
Samantha Skoczylas	9.40	0.00	0.00	34.60	36.00	3.60	0.00	0.00		
	\$1,221.91	\$0.00	\$0.00	\$3,114.00	\$1,421.28	\$234.00	\$0.00	\$0.00	\$ 5,991.19	2.93%
Sonya Slater	7.40	4.00	0.00	29.40	0.00	1.00	0.00	0.00		
	\$961.93	\$519.96	\$0.00	\$2,646.00	\$0.00	\$65.00	\$0.00	\$0.00	\$ 4,192.89	2.05%
Beth Steeper	16.60	0.00	0.00	34.80	0.00	1.20	0.00	0.00		
	\$2,157.83	\$0.00	\$0.00	\$3,132.00	\$0.00	\$78.00	\$0.00	\$0.00	\$ 5,367.83	2.63%
Sheridan Smith	0.00	0.00	0.00	0.00	0.00	0.00	49.10	0.00		
	\$0.00	\$0.00	\$0.00	\$0.00	\$0.00	\$0.00	\$9,574.50	\$0.00	\$ 9,574.50	4.68%
Sarah Sohar	8.90	0.00	0.00	0.00	0.00	0.00	0.00	0.00		
	\$1,156.91	\$0.00	\$0.00	\$0.00	\$0.00	\$0.00	\$0.00	\$0.00	\$ 1,156.91	0.57%
Heather Stevens	8.00	0.00	0.00	76.50	36.00	5.00	0.00	0.00		
	\$1,039.92	\$0.00	\$0.00	\$6,885.00	\$1,421.28	\$325.00	\$0.00	\$0.00	\$ 9,671.20	4.73%
Cara Sussman	24.30	0.00	0.00	65.80	0.00	6.10	0.00	0.00		
	\$3,158.76	\$0.00	\$0.00	\$5,922.00	\$0.00	\$396.50	\$0.00	\$0.00	\$ 9,477.26	4.64%
Caleb Tipple	0.00	0.00	0.00	0.00	0.00	68.50	0.00	0.00		
	\$0.00	\$0.00	\$0.00	\$0.00	\$0.00	\$4,452.50	\$0.00	\$0.00	\$ 4,452.50	2.18%
Thomas Vajen	\$0.00	\$0.00	\$0.00	\$0.00	\$0.00	\$0.00	\$5.10	\$0.00		
	\$0.00	\$0.00	\$0.00	\$0.00	\$0.00	\$0.00	\$994.50	\$0.00	\$ 994.50	0.49%
Miranda Zircher	2.80	0.00	0.00	75.50	36.00	2.10	0.00	0.00		
	\$363.97	\$0.00	\$0.00	\$6,795.00	\$1,421.28	\$136.50	\$0.00	\$0.00	\$ 8,716.75	4.26%
Sum Totals	\$35,331.28	\$4,783.63	\$0.00	\$125,478.00	\$8,018.39	\$18,154.33	\$12,792.00	\$602.00	\$ 204,423.08	

This chart represents the percentage of the total dollars billed by clinician.