

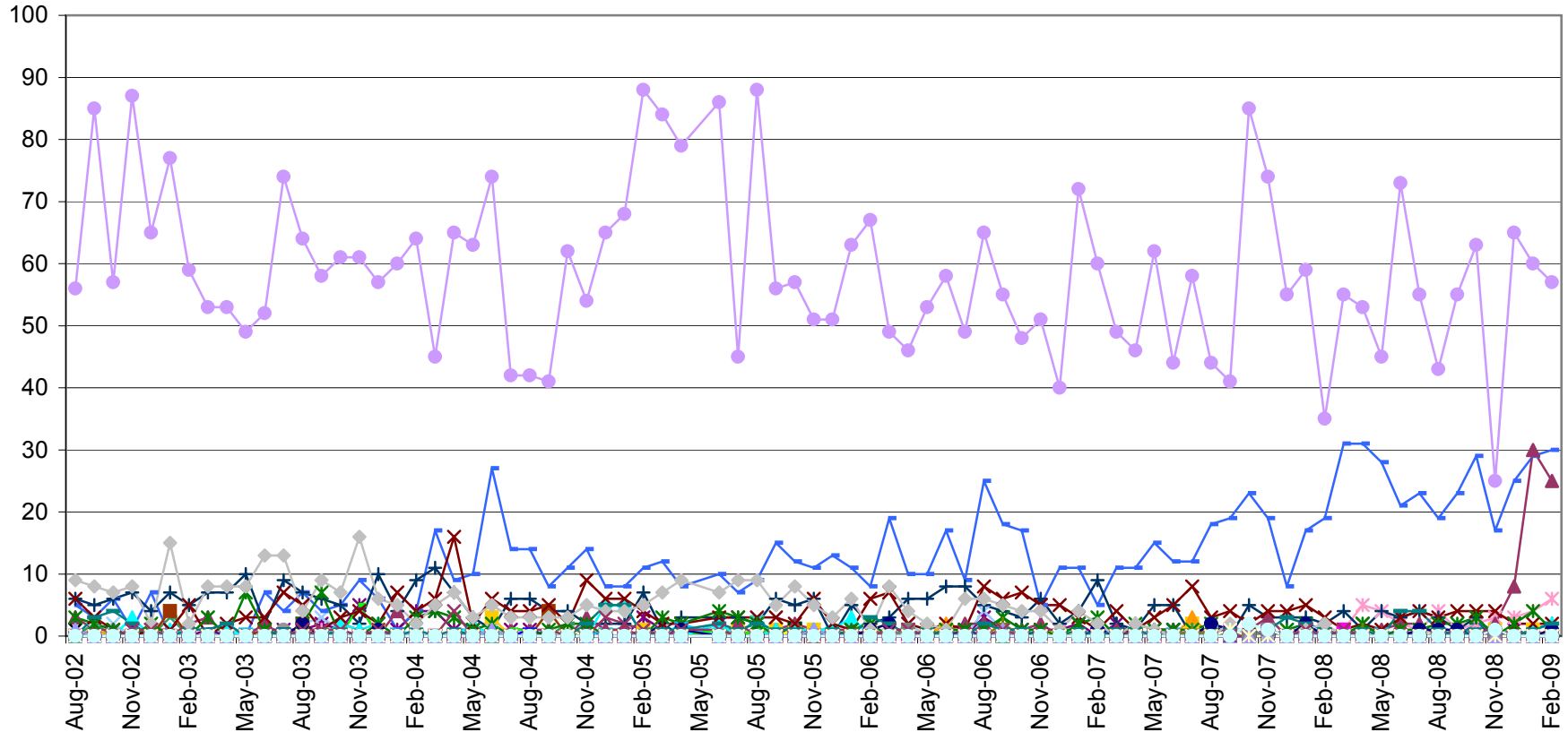
FEBRUARY 2009

UTILIZATION REVIEW

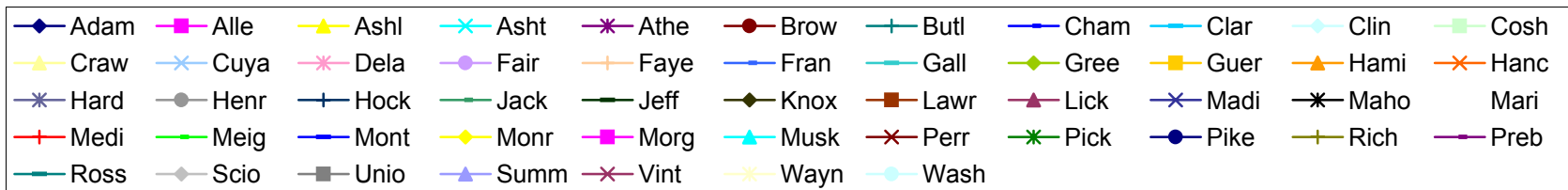
Clinician	Number of Clients Assigned	Number of Clients Seen	Number of Services Rendered	Average Number of Contacts Per Client Seen
Dean Bachelor, M.Div.	22	13	29	2.23
Kimberly Blair, M.A., PC	70	35	84	2.40
Misty Coleman, MSW, LISW	73	36	64	1.78
Janet Crabtree, BA, CT	9	22	83	3.77
Scott Craft, Ph.D.	55	30	84	2.80
Rachel Cranmer, MA, PC	53	30	63	2.10
Jennifer DiBlasio, MA	116	50	104	2.08
Daniel DiSalvo, CNP	20	16	17	1.06
Joe Dunson, M.Ed., PC	157	50	79	1.58
Will Froilan, MA	55	19	52	2.74
Helka Gienapp, B.A.	54	17	63	3.71
Dan Goodwin, BA, LSW	20	19	89	4.68
Jodie Grafmiller, BA	3	2	5	2.50
Joni Grim, Ph.D., PCC	69	18	28	1.56
Brad Hedges, Ph.D., PCC	51	7	8	1.14
Stacy Ingraham, BA	104	40	80	2.00
Emily Joseph, BA	59	30	70	2.33
Amanda Martin, M.Ed. PC	70	35	137	3.91
Amynda Martin, PsyD	72	14	27	1.93
Jessica Mitchell, MA, PC	107	25	40	1.60
Tricia Ostrander, Ph.D.	102	39	67	1.72
Robin Rippeth Ph.D., PCC	64	8	12	1.50
Kelly Roberts, MA	43	23	61	2.65
Claire Robitaille, M.S., LSW	68	36	63	1.75
Allisha Rone, BA	11	10	20	2.00
Jennifer Schwind, M.A.	128	48	88	1.83
Mike Selegue, MSW, LISW	118	56	104	1.86
Samantha Skoczylas, MA	57	31	55	1.77
Sonya Slater, PsyD	29	13	26	2.00
Sheridan Smith, M.D.	80	78	83	1.06
Heather Stevens, MSW, LSW	78	36	116	3.22
Cara Sussman, B.A.	35	17	50	2.94
Caleb Tipple, B.S.	30	28	90	3.21
Miranda Zircher, MS, PC	117	35	94	2.69
Average	66.64	28.41	62.79	2.27

The No Show rate for February was 20%. When considering both the no show rate and the cancellation rate, this figure is 31%.

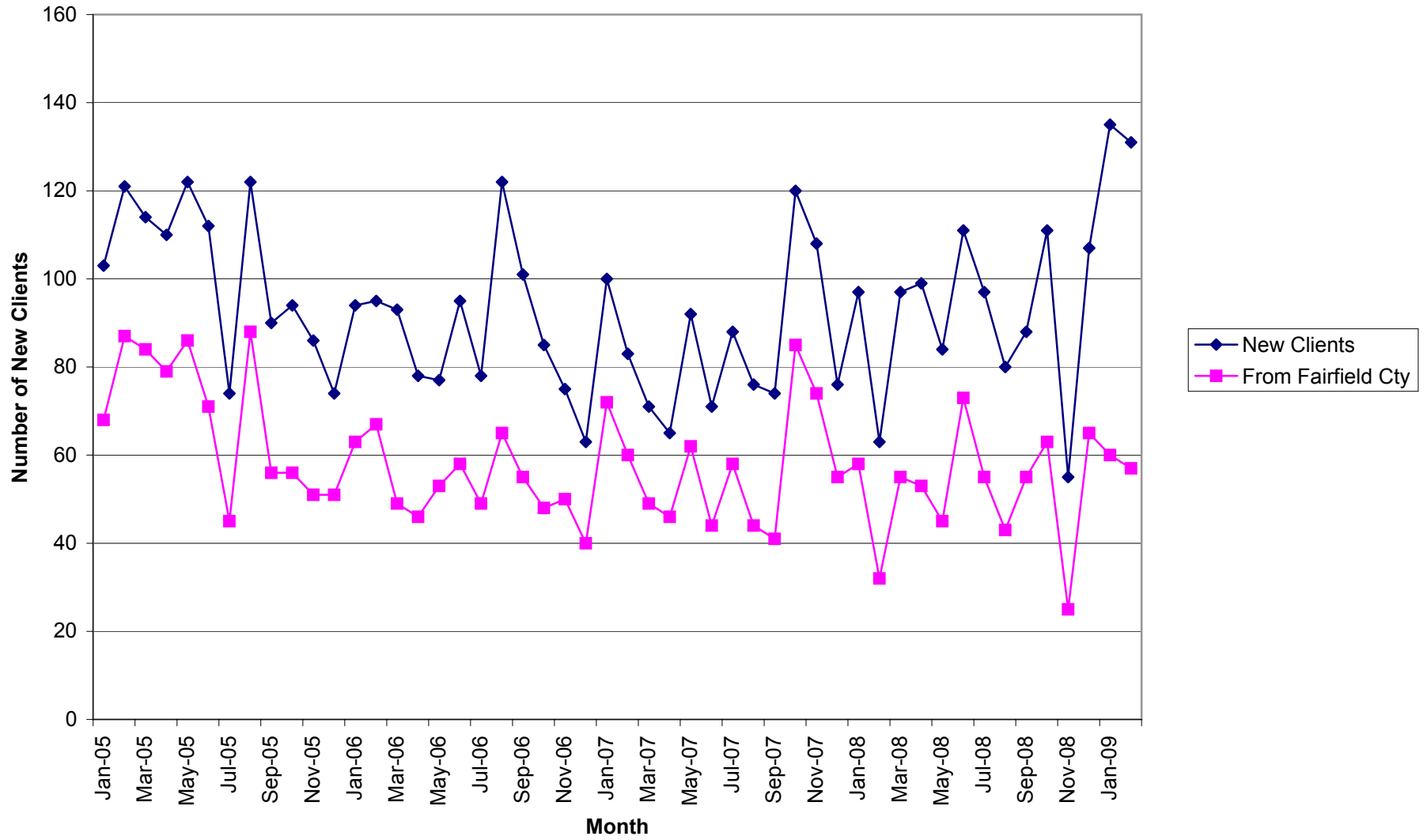
Number of Intakes by County



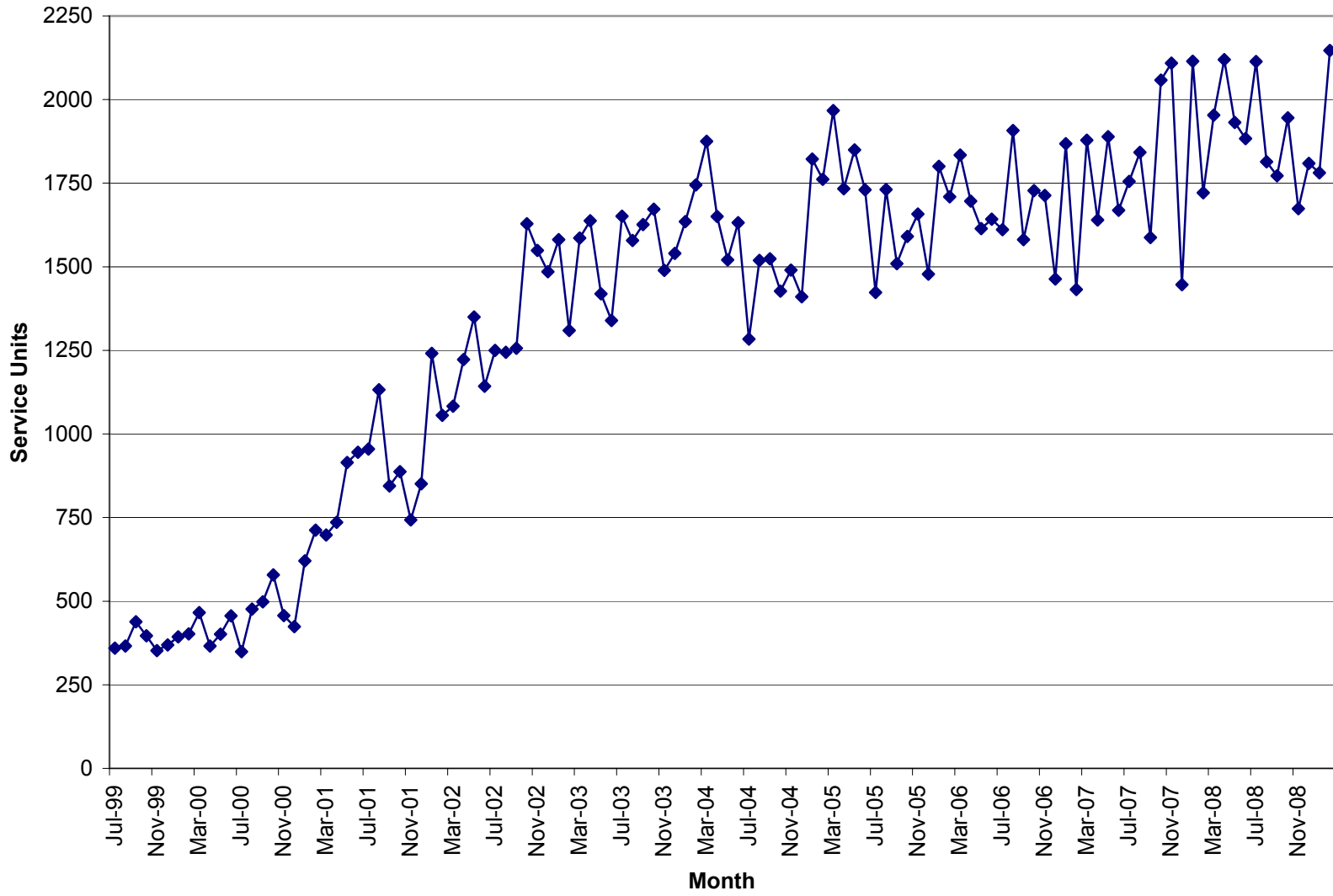
Prior to 9/05 the numbers reported were somewhat inflated due to a report issue that has been corrected.



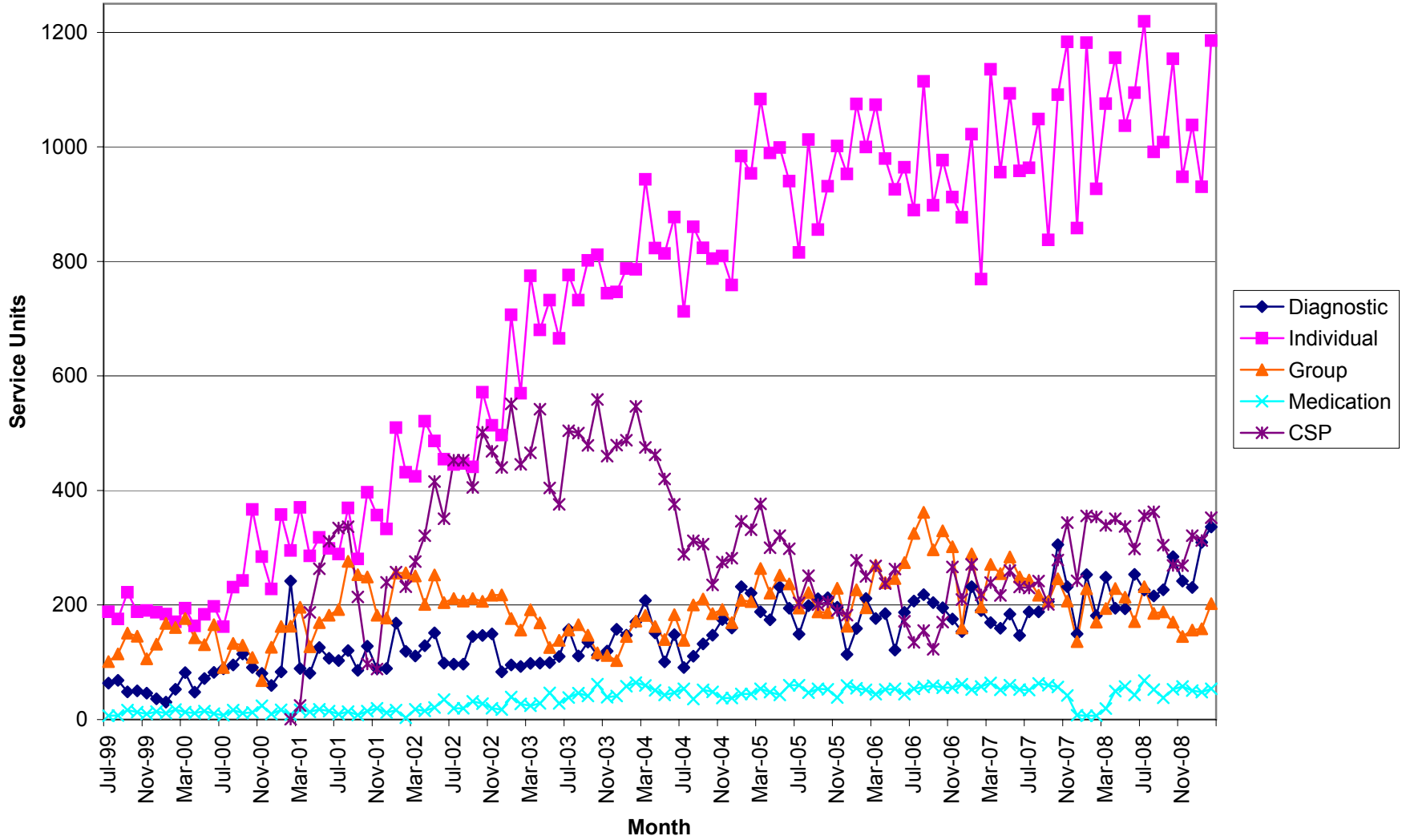
New Clients



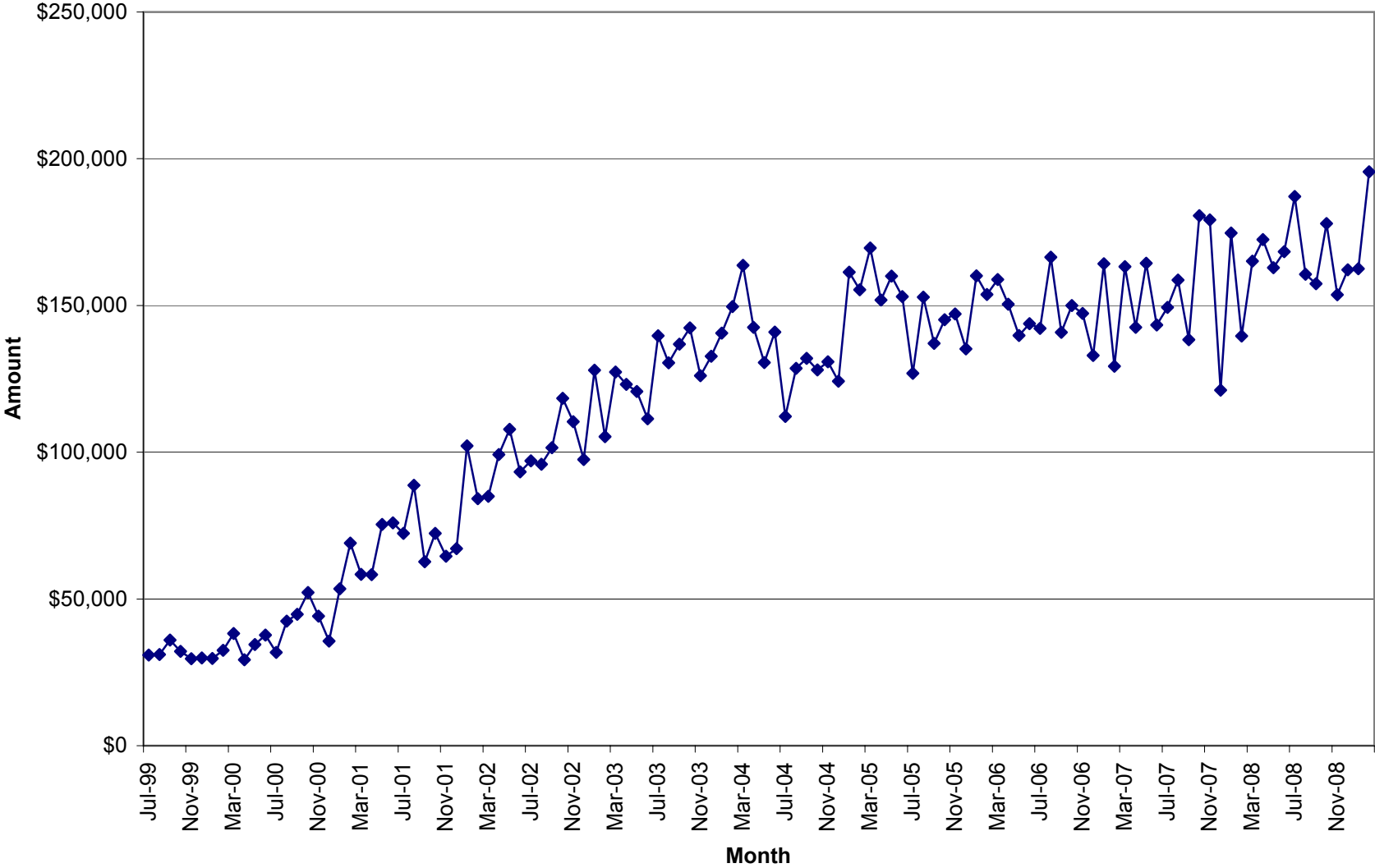
Total Units of Service



Units of Service



Total Units \$



Unit Production & Scheduling Proficiency by Clinician
Mid Ohio Psychological Services

February 2009

	Cancellations	Missed	Diagnostics	Evaluations	AOD Assessments	Individual	Group	Community Support	Medication	Other Units	Total Units	Billable Units	Units Billed+ Missed	Schedule Proficiency	% Canceled	% Missed	Lost Units due to C & M	% of Total Billable Units
Unit Rate			129.99	129.99	96.24	90	39.48	65	195	35								
Dean Bachelor	0	5	0.00	0.00	0.00	0.00	50.00	0.00	0.0		55.00	50.00	55.00	91%	0%	9%	9%	2.33%
Kimberly Blair	7	12	3.50	19.50	0.00	60.10	0.00	8.40	0.0		110.50	91.50	103.50	83%	6%	11%	17%	4.26%
Misty Coleman	52	11	19.00	0.00	0.00	43.20	0.00	3.00	0.0		128.20	65.20	76.20	51%	41%	9%	49%	3.04%
Janet Crabtree	0	0	0.00	0.00	0.00	0.00	0.00	93.90	0.0		93.90	93.90	93.90					4.37%
Scott Craft	3	10	4.30	0.00	0.00	41.00	53.50	3.90	0.0	4.0	119.70	106.70	116.70	89%	3%	8%	11%	4.97%
Rachel Cramner	12	14	15.20	0.00	0.00	54.60	0.00	1.10	0.0		96.90	70.90	84.90	73%	12%	14%	27%	3.30%
Jennifer DiBlasio	31	51	9.80	0.00	0.00	73.10	9.20	3.60	0.0		177.70	95.70	146.70	54%	17%	29%	46%	4.46%
Daniel DiSalvo	4	3	0.00	0.00	0.00	0.00	0.00	0.00	8.5		15.50	8.50	11.50	55%	26%	19%	45%	0.40%
Joe Dunson	9	45	11.80	0.00	0.00	60.10	0.00	2.20	0.0		128.10	74.10	119.10	58%	7%	35%	42%	3.45%
Will Froilan	3	21	27.30	1.20	0.00	21.90	0.00	5.60	0.0		80.00	56.00	77.00	70%	4%	26%	30%	2.61%
Helka Gienapp	6	16	2.80	0.00	0.00	32.00	22.00	8.90	0.0		87.70	65.70	81.70	75%	7%	18%	25%	3.06%
Dan Goodwin*	0	0	0.00	0.00	0.00	0.00	0.00	73.60	0.0		73.60	73.60	73.60					3.43%
Joni Grim	7	11	6.90	0.00	0.00	22.00	0.00	0.00	0.0		46.90	28.90	39.90	62%	15%	23%	38%	1.35%
Jodi Grafmiller	1	3	0.00	0.00	0.00	1.90	2.00	0.80	0.0		6.70	2.70	5.70	40%	15%	45%	60%	0.13%
Brad Hedges	0	1	0.00	13.40	0.00	0.00	0.00	0.00	0.0		14.40	13.40	14.40	93%	0%	7%	7%	0.62%
Stacy Ingraham	13	41	11.60	0.00	0.00	60.60	0.00	4.70	0.0		130.90	76.90	117.90	59%	10%	31%	41%	3.58%
Emily Joseph	10	19	21.00	0.00	0.00	45.80	0.00	5.20	0.0		101.00	72.00	91.00	71%	10%	19%	29%	3.35%
Amanda Martin	19	22	1.00	0.00	0.00	111.20	0.00	21.10	0.0		174.30	133.30	155.30	76%	11%	13%	24%	6.21%
Amynda Martin	0	0	10.50	0.00	0.00	8.00	0.00	1.10	0.0	12.0	31.60	31.60	31.60	100%	0%	0%	0%	1.47%
Jessica Mitchell	12	12	17.30	0.00	0.00	28.30	0.00	0.30	0.0		69.90	45.90	57.90	66%	17%	17%	34%	2.14%
Tricia Ostrander	22	12	14.30	0.00	0.00	57.80	0.00	0.50	0.0		106.60	72.60	84.60	68%	21%	11%	32%	3.38%
Robin Rippeth	3	5	0.00	14.10	0.00	3.50	0.00	0.70	0.0		26.30	18.30	23.30	70%	11%	19%	30%	0.85%
Kelly Roberts	4	22	7.60	1.00	0.00	51.80	0.00	2.80	0.0		89.20	63.20	85.20	71%	4%	25%	29%	2.94%
Claire Robitaille	11	16	19.00	0.00	0.00	46.50	0.00	1.80	0.0		94.30	67.30	83.30	71%	12%	17%	29%	3.14%
Allisha Rone	2	9	0.00	0.00	0.00	16.30	0.00	1.50	0.0		28.80	17.80	26.80	62%	7%	31%	38%	0.83%
Jennifer Schwind	15	30	25.10	0.00	0.00	58.50	0.00	2.40	0.0		131.00	86.00	116.00	66%	11%	23%	34%	4.01%
Mike Selegue	15	43	14.80	0.00	0.00	73.50	10.50	0.80	0.0		157.60	99.60	142.60	63%	10%	27%	37%	4.64%
Samantha Skoczylas	2	34	13.40	1.40	0.00	32.10	4.50	0.20	0.0		87.60	51.60	85.60	59%	2%	39%	41%	2.40%
Sonya Slater	3	11	6.40	10.60	0.00	12.20	0.00	2.00	0.0		45.20	31.20	42.20	69%	7%	24%	31%	1.45%
Sheridan Smith	23	24	0.00	0.00	0.00	0.00	0.00	0.00	45.2		92.20	45.20	69.20	49%	25%	26%	51%	2.11%
Heather Stevens	23	30	9.00	0.00	0.00	61.70	52.80	7.90	0.0		184.40	131.40	161.40	71%	12%	16%	29%	6.12%
Cara Sussman	3.00	13.00	0.00	0.00	0.00	40.10	0.00	5.90	0.00		62	46.00	59.00	74%	5%	21%	26%	2.14%
Caleb Tipple	0.00	0.00	0.00	0.00	0.00	0.00	0.00	80.60	0.00		80.6	80.60	80.60					3.75%
Miranda Zircher	18	29	3.50	0.00	0.00	67.80	0.00	8.10	0.0		126.40	79.40	108.40	63%	14%	23%	37%	3.70%
Sum Totals	333.00	575.00	275.10	61.20	0.00	1185.60	202.50	352.60	53.70	16.00	3054.70	2146.70	2721.70					
Average														69%	11%	20%	31%	2.92%

* These clinicians do not have a daily scheduler therefore their totals are not reported in the missed or cancelled sessions.

% of Agency \$ Billed by Clinician

February	2009								Tot Units	% of Tot
	DA	Eval	AOD	IND	Group	CSP	MED	Other		
Unit Rate	\$ 129.99	\$ 129.99	\$ 96.24	\$ 90	\$ 39.48	\$ 65	\$ 195	\$ 35		
Dean Bachelor	0.00	0.00	0.00	0.00	50.00	0.00	0.00	0.00		
	\$0	\$0	\$0	\$0	\$1,974	\$0	\$0	\$0	\$ 1,974.00	1.03%
Kimberly Blair	3.50	19.50	0.00	60.10	0.00	8.40	0.00	0.00		
	\$454.97	\$2,534.81	\$0.00	\$5,409.00	\$0.00	\$546.00	\$0.00	\$0.00	\$ 8,944.77	4.66%
Misty Coleman	19.00	0.00	0.00	43.20	0.00	3.00	0.00	0.00		
	\$2,469.81	\$0.00	\$0.00	\$3,888.00	\$0.00	\$195.00	\$0.00	\$0.00	\$ 6,552.81	3.41%
Janet Crabtree	0.00	0.00	0.00	0.00	0.00	93.90	0.00	0.00		
	\$0.00	\$0.00	\$0.00	\$0.00	\$0.00	\$6,103.50	\$0.00	\$0.00	\$ 6,103.50	3.18%
Scott Craft	4.30	0.00	0.00	41.00	53.50	3.90	0.00	4.00		
	\$558.96	\$0.00	\$0.00	\$3,690.00	\$2,112.18	\$253.50	\$0.00	\$140.00	\$ 6,754.64	3.52%
Rachel Cranmer	15.20	0.00	0.00	54.60	0.00	1.10	0.00	0.00		
	\$1,975.85	\$0.00	\$0.00	\$4,914.00	\$0.00	\$71.50	\$0.00	\$0.00	\$ 6,961.35	3.62%
Jennifer DiBlasio	9.80	0.00	0.00	73.10	9.20	3.60	0.00	0.00		
	\$1,273.90	\$0.00	\$0.00	\$6,579.00	\$363.22	\$234.00	\$0.00	\$0.00	\$ 8,450.12	4.40%
Daniel DiSalvo	0.00	0.00	0.00	0.00	0.00	0.00	8.50	0.00		
	\$0.00	\$0.00	\$0.00	\$0.00	\$0.00	\$0.00	\$1,657.50	\$0.00	\$ 1,657.50	0.86%
Joe Dunson	11.80	0.00	0.00	60.10	0.00	2.20	0.00	0.00		
	\$1,533.88	\$0.00	\$0.00	\$5,409.00	\$0.00	\$143.00	\$0.00	\$0.00	\$ 7,085.88	3.69%
Will Froilan	27.30	1.20	0.00	21.90	0.00	5.60	0.00	0.00		
	\$3,548.73	\$155.99	\$0.00	\$1,971.00	\$0.00	\$364.00	\$0.00	\$0.00	\$ 6,039.72	3.14%
Helka Gienapp	2.80	0.00	0.00	32.00	22.00	8.90	0.00	0.00		
	\$363.97	\$0.00	\$0.00	\$2,880.00	\$868.56	\$578.50	\$0.00	\$0.00	\$ 4,691.03	2.44%
Dan Goodwin	0.00	0.00	0.00	0.00	0.00	73.60	0.00	0.00		
	\$0.00	\$0.00	\$0.00	\$0.00	\$0.00	\$4,784.00	\$0.00	\$0.00	\$ 4,784.00	2.49%
Joni Grim	6.90	0.00	0.00	22.00	0.00	0.00	0.00	0.00		
	\$896.93	\$0.00	\$0.00	\$1,980.00	\$0.00	\$0.00	\$0.00	\$0.00	\$ 2,876.93	1.50%
Brad Hedges	0.00	13.40	0.00	0.00	0.00	0.00	0.00	0.00		
	\$0.00	\$1,741.87	\$0.00	\$0.00	\$0.00	\$0.00	\$0.00	\$0.00	\$ 1,741.87	0.91%
Stacy Ingraham	11.60	0.00	0.00	60.60	0.00	4.70	0.00	0.00		
	\$1,507.88	\$0.00	\$0.00	\$5,454.00	\$0.00	\$305.50	\$0.00	\$0.00	\$ 7,267.38	3.78%
Emily Joseph	21.00	0.00	0.00	45.80	0.00	5.20	0.00	0.00		
	\$2,729.79	\$0.00	\$0.00	\$4,122.00	\$0.00	\$338.00	\$0.00	\$0.00	\$ 7,189.79	3.74%
Amanda Martin	1.00	0.00	0.00	111.20	0.00	21.10	0.00	0.00		
	129.99	\$0.00	\$0.00	\$10,008.00	\$0.00	\$1,371.50	\$0.00	\$0.00	\$ 11,509.49	5.99%
Amynda Martin	10.50	0.00	0.00	8.00	0.00	1.10	0.00	12.00		
	\$1,364.90	\$0.00	\$0.00	\$720.00	\$0.00	\$71.50	\$0.00	\$420.00	\$ 2,576.40	1.34%
Jessica Mitchell	17.30	0.00	0.00	28.30	0.00	0.30	0.00	0.00		
	\$2,248.83	\$0.00	\$0.00	\$2,547.00	\$0.00	\$19.50	\$0.00	\$0.00	\$ 4,815.33	2.51%
Tricia Ostrander	14.30	0.00	0.00	57.80	0.00	0.50	0.00	0.00		
	\$1,858.86	\$0.00	\$0.00	\$5,202.00	\$0.00	\$32.50	\$0.00	\$0.00	\$ 7,093.36	3.69%
Robin Rippeth	0.00	14.10	0.00	3.50	0.00	0.70	0.00	0.00		
	\$0.00	\$1,832.86	\$0.00	\$315.00	\$0.00	\$45.50	\$0.00	\$0.00	\$ 2,193.36	1.14%
Kelly Roberts	7.60	1.00	0.00	51.80	0.00	2.80	0.00	0.00		
	\$987.92	\$129.99	\$0.00	\$4,662.00	\$0.00	\$182.00	\$0.00	\$0.00	\$ 5,961.91	3.10%
Claire Robitaille	19.00	0.00	0.00	46.50	0.00	1.80	0.00	0.00		
	\$2,469.81	\$0.00	\$0.00	\$4,185.00	\$0.00	\$117.00	\$0.00	\$0.00	\$ 6,771.81	3.52%
Allisha Rone	0.00	0.00	0.00	16.30	0.00	1.50	0.00	0.00		
	\$0.00	\$0.00	\$0.00	\$1,467.00	\$0.00	\$97.50	\$0.00	\$0.00	\$ 1,564.50	0.81%
Jennifer Schwind	25.10	0.00	0.00	58.50	0.00	2.40	0.00	0.00		
	\$3,262.75	\$0.00	\$0.00	\$5,265.00	\$0.00	\$156.00	\$0.00	\$0.00	\$ 8,683.75	4.52%
Mike Selegue	14.80	0.00	0.00	73.50	10.50	0.80	0.00	0.00		
	\$1,923.85	\$0.00	\$0.00	\$6,615.00	\$414.54	\$52.00	\$0.00	\$0.00	\$ 9,005.39	4.69%
Samantha Skoczylas	13.40	1.40	0.00	32.10	4.50	0.20	0.00	0.00		
	\$1,741.87	\$181.99	\$0.00	\$2,889.00	\$177.66	\$13.00	\$0.00	\$0.00	\$ 5,003.51	2.60%
Sonya Slater	6.40	10.60	0.00	12.20	0.00	2.00	0.00	0.00		
	\$831.94	\$1,377.89	\$0.00	\$1,098.00	\$0.00	\$130.00	\$0.00	\$0.00	\$ 3,437.83	1.79%
Sheridan Smith	0.00	0.00	0.00	0.00	0.00	0.00	45.20	0.00		
	\$0.00	\$0.00	\$0.00	\$0.00	\$0.00	\$0.00	\$8,814.00	\$0.00	\$ 8,814.00	4.59%
Heather Stevens	9.00	0.00	0.00	61.70	52.80	7.90	0.00	0.00		
	\$1,169.91	\$0.00	\$0.00	\$5,553.00	\$2,084.54	\$513.50	\$0.00	\$0.00	\$ 9,320.95	4.85%
Cara Sussman	0.00	0.00	0.00	40.10	0.00	5.90	0.00	0.00		
	\$0.00	\$0.00	\$0.00	\$3,609.00	\$0.00	\$383.50	\$0.00	\$0.00	\$ 3,992.50	2.08%
Caleb Tipple	0.00	0.00	0.00	0.00	0.00	80.60	0.00	0.00		
	\$0.00	\$0.00	\$0.00	\$0.00	\$0.00	\$5,239.00	\$0.00	\$0.00	\$ 5,239.00	2.73%
Miranda Zircher	3.50	0.00	0.00	67.80	0.00	8.10	0.00	0.00		
	\$454.97	\$0.00	\$0.00	\$6,102.00	\$0.00	\$526.50	\$0.00	\$0.00	\$ 7,083.47	3.69%
Sum Totals	\$35,760.25	\$7,643.41	\$0.00	\$105,066.00	\$7,453.82	\$16,675.40	\$10,471.50	\$560.00	\$ 192,141.84	

This chart represents the percentage of the total dollars billed by clinician.