

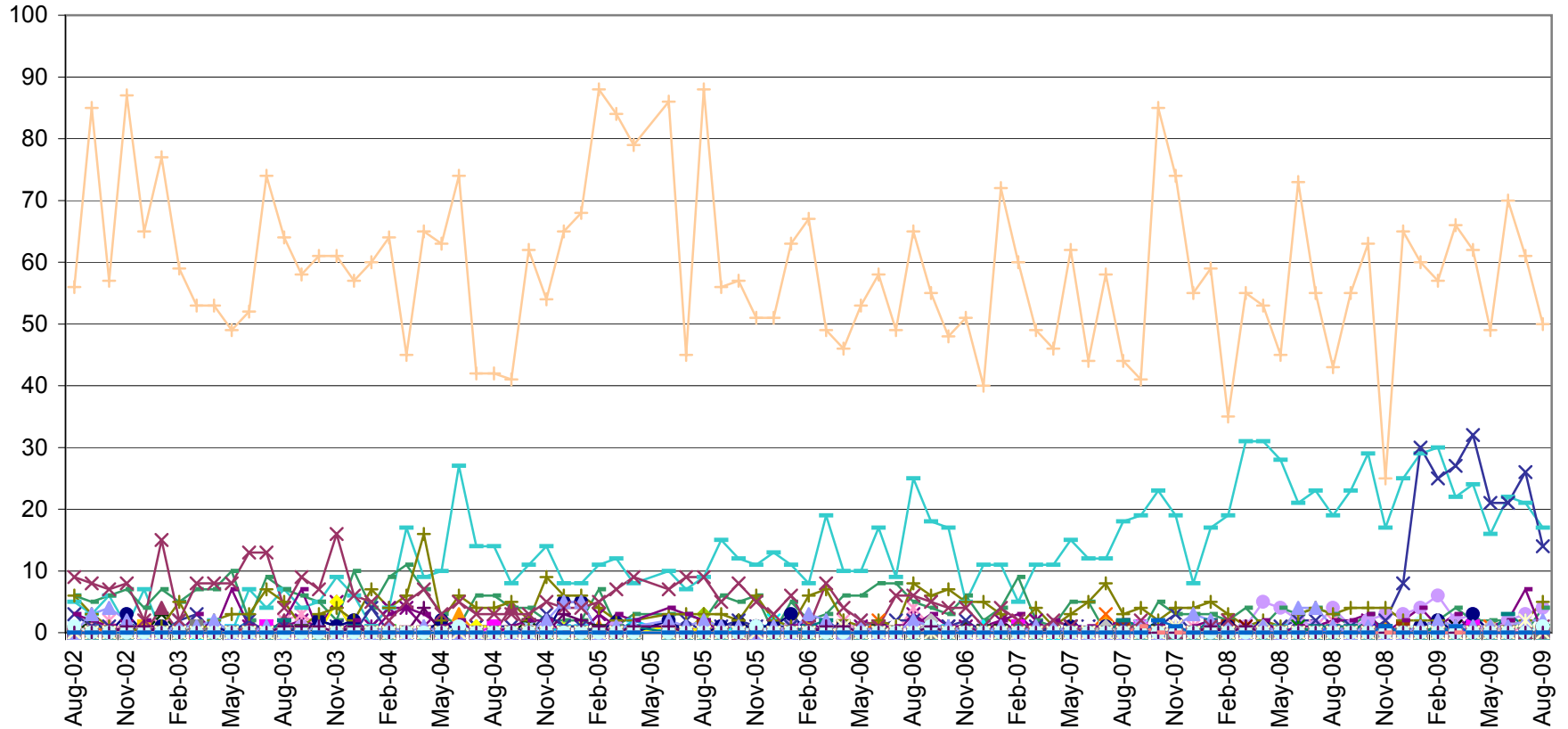
AUGUST 2009

UTILIZATION REVIEW

Clinician	Number of Clients Assigned	Number of Clients Seen	Number of Services Rendered	Average Number of Contacts Per Client Seen
Dean Bachelor, M.Div.	21	17	48	2.82
Kimberly Blair, M.A., PC	75	37	78	2.11
Misty Coleman, MSW, LISW	96	37	81	2.19
Janet Crabtree, BA, CT	15	28	89	3.18
Scott Craft, Ph.D.	56	29	61	2.10
Rachel Cranmer, MA, PC	54	24	44	1.83
Daniel DiSalvo, CNP	20	13	13	1.00
Joe Dunson, M.Ed., PC	142	41	69	1.68
Tricia Foster, Ph.D.	104	42	83	1.98
Will Froilan, MA	55	40	63	1.58
Helka Gienapp, B.A.	54	12	35	2.92
Jodie Grafmiller, BA	36	15	32	2.13
Hope Gray	26	19	34	1.79
Brad Hedges, Ph.D., PCC	53	7	7	1.00
Stacy Ingraham, BA	114	43	73	1.70
Emily Joseph, BA	64	37	84	2.27
Joni Krzycki, Ph.D., PCC	68	14	22	1.57
Amanda Martin, M.Ed. PC	71	40	160	4.00
Amynda Martin, PsyD	74	11	23	2.09
Jessica Mitchell, MA, PC	114	13	31	2.38
Arianna Profato, BA	5	9	25	2.78
Robin Rippeth Ph.D., PCC	57	11	12	1.09
Kelly Roberts, MA	47	32	83	2.59
Claire Robitaille, M.S., LSW	75	20	51	2.55
Jennifer Schwind, M.A.	13	43	90	2.09
Mike Selegue, MSW, LISW	132	58	107	1.84
Ashley Shoemaker	128	6	15	2.50
Samantha Skoczylas, MA	12	29	74	2.55
Sonya Slater, PsyD	61	11	19	1.73
Beth Sleeper	31	45	97	2.16
Sheridan Smith, M.D.	45	32	33	
Sarah Sohar, MA, PC	80	44	100	2.27
Heather Stevens, MSW, LSW	66	40	109	2.73
Cara Sussman, B.A.	75	32	53	1.66
Caleb Tipple, B.S.	35	30	105	3.50
Thomas Vajen	26	28	28	1.00
Miranda Zircher, MS, PC	28	40	109	2.73
Average	60	28	61	2.17

The No Show rate for August was 20%. When considering both the no show rate and the cancellation rate, this figure is 34%.

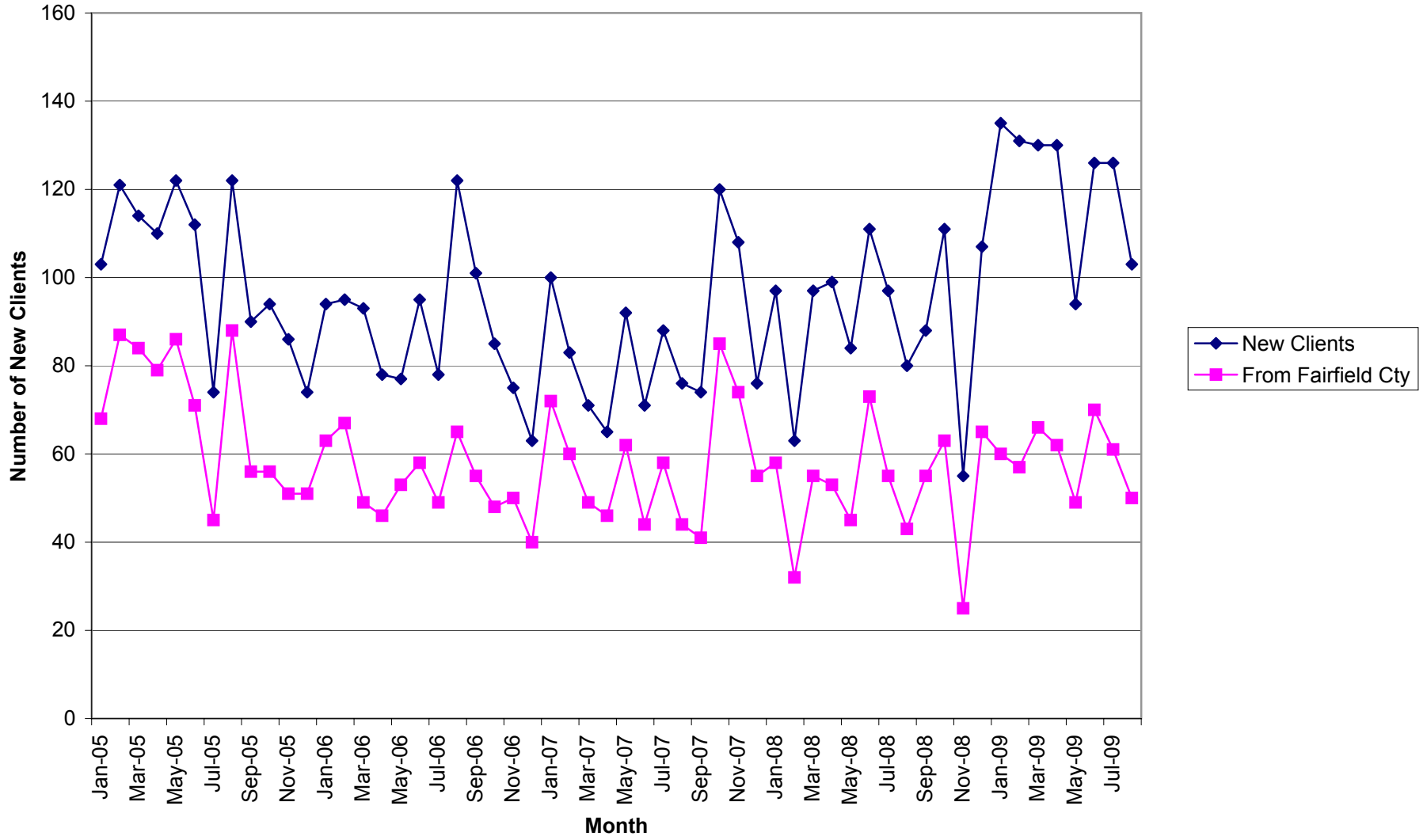
Number of Intakes by County



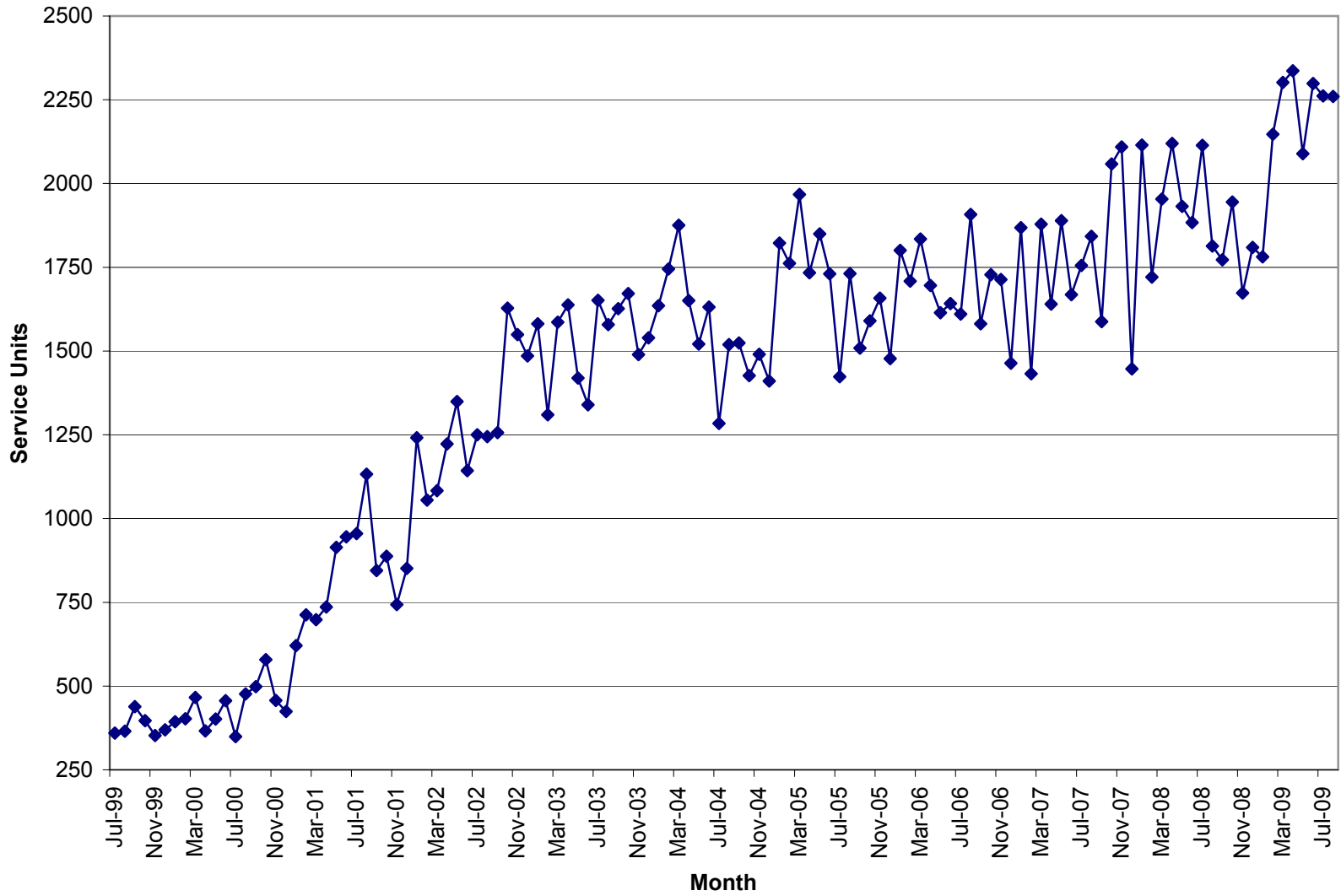
Prior to 9/05 the numbers reported were somewhat inflated due to a report issue that has been corrected.



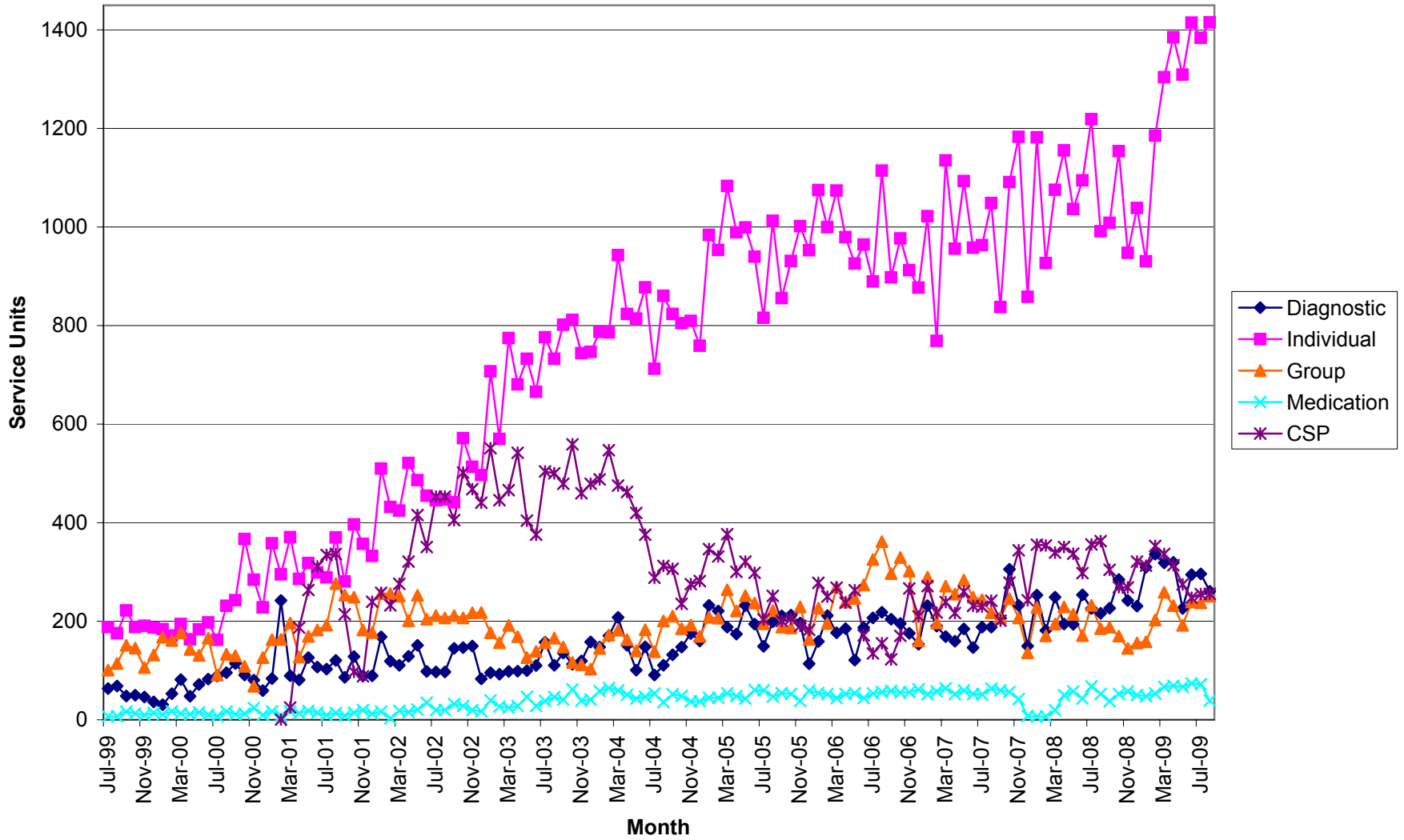
New Clients



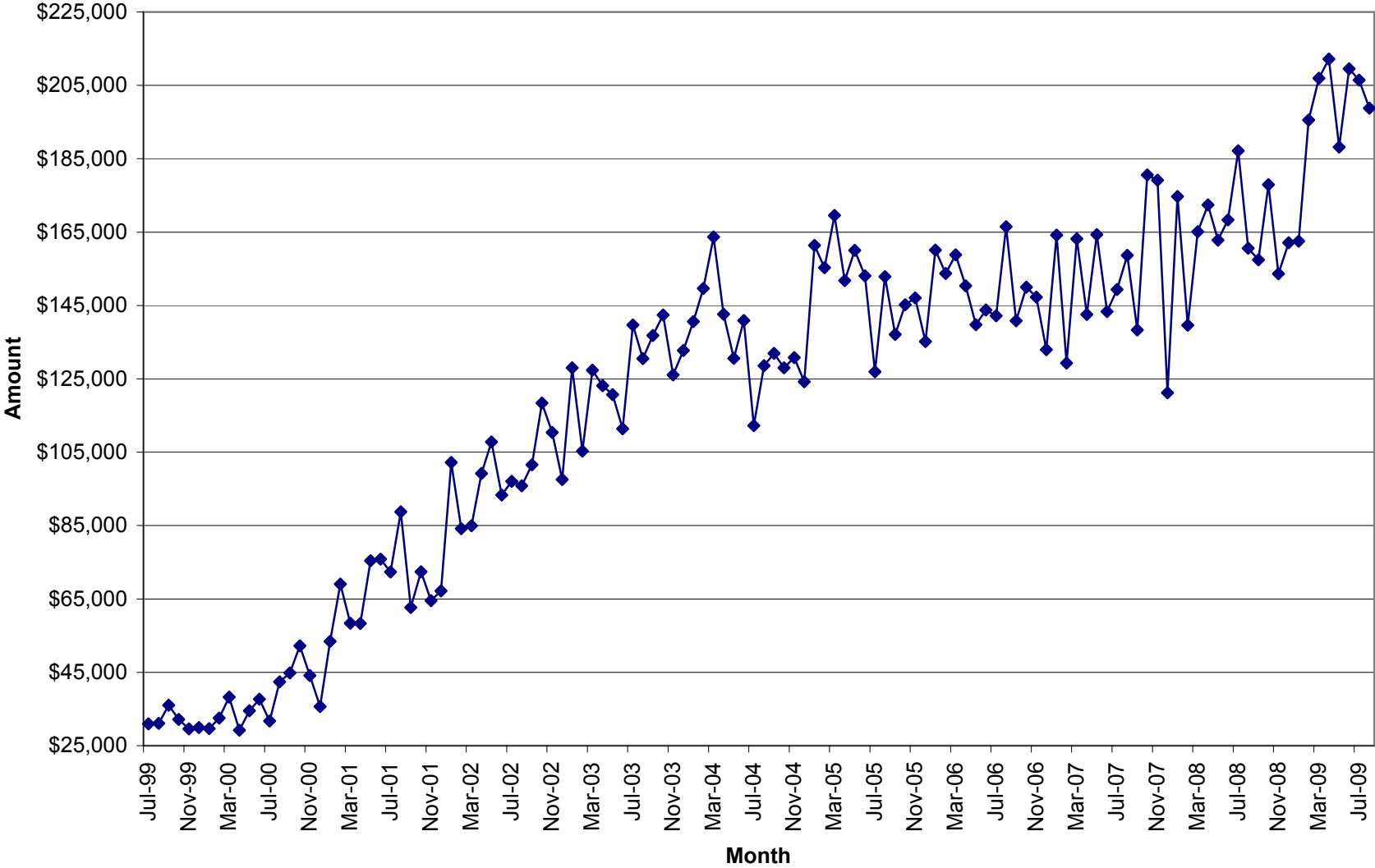
Total Units of Service



Units of Service



Total Units \$



August 2009

Unit Production & Scheduling Proficiency by Clinician
Mid Ohio Psychological Services

	Cancellations	Missed	Diagnostics	Evaluations	AOD Assessments	Individual	Group	Community Support	Medication	Other Units	Total Units	Billable Units	Units Billed+ Missed	Schedule Proficiency	% Canceled	% Missed	Lost Units due to C & M	% of Total Billable Units	High Scheduling Proficiency	Significantly Low Scheduling Proficiency
Unit Rate			129.99	129.99	96.24	90	39.48	65	195	35										
Dean Bachelor	0	8	1.00	0.00	0.00	9.30	74.00	0.00	0.0		92.30	84.30	92.30	91%	0%	9%	9%	3.73%	Yes	No
Kimberly Blair	17	9	3.00	15.00	0.00	67.20	0.00	3.30	0.0		114.50	88.50	97.50	77%	15%	8%	23%	3.92%	No	No
Misty Coleman	28	29	6.00	0.00	0.00	71.20	0.00	2.70	0.0		136.90	79.90	108.90	58%	20%	21%	42%	3.54%	No	No
Janet Crabtree	0	0	0.00	0.00	0.00	0.00	0.00	90.20	0.0		90.20	90.20	90.20					3.99%		
Scott Craft	7	8	3.30	0.00	0.00	38.70	9.60	0.30	0.0	5.0	71.90	56.90	64.90	79%	10%	11%	21%	2.52%	Yes	No
Rachel Cramner	10	18	12.30	0.00	0.00	33.30	0.00	0.80	0.0		74.40	46.40	64.40	62%	13%	24%	38%	2.05%	No	No
Daniel DiSalvo	1	10	0.00	0.00	0.00	0.00	0.00	0.00	6.5		17.50	6.50	16.50	37%	6%	57%	63%	0.29%	No	Yes
Joe Dunson	33	31	10.00	5.00	0.00	56.30	0.00	0.60	0.0		135.90	71.90	102.90	53%	24%	23%	47%	3.18%	No	Yes
Tricia Foster	18	10	14.10	0.00	0.00	71.00	0.00	0.00	0.0		113.10	85.10	95.10	75%	16%	9%	25%	3.77%	No	No
Will Froilan	19	20	18.00	0.00	0.00	51.20	0.00	0.90	0.0		109.10	70.10	90.10	64%	17%	18%	36%	3.10%	No	No
Helka Gienapp	11	8	0.00	0.00	0.00	16.30	25.50	0.90	0.0		61.70	42.70	50.70	69%	18%	13%	31%	1.89%	No	No
Jodi Grafmiller	10	10	0.00	0.00	0.00	29.80	0.00	0.00	0.0		49.80	29.80	39.80	60%	20%	20%	40%	1.32%	No	No
Hope Gray	9	13	0.00	0.00	0.00	31.30	0.00	0.00	0.0		53.30	31.30	44.30	59%	17%	24%	41%	1.38%	No	No
Brad Hedges	0	3	0.00	3.00	0.00	2.30	0.00	0.00	0.0		8.30	5.30	8.30	64%	0%	36%	36%	0.23%	No	No
Stacy Ingraham	22	34	8.30	0.00	0.00	58.10	0.00	2.70	0.0		125.10	69.10	103.10	55%	18%	27%	45%	3.06%	No	No
Emily Joseph	24	22	23.30	0.00	0.00	50.60	0.00	6.40	0.0		126.30	80.30	102.30	64%	19%	17%	36%	3.55%	No	No
Joni Krzycki	5	10	3.20	0.00	0.00	15.80	0.00	1.70	0.0		35.70	20.70	30.70	58%	14%	28%	42%	0.92%	No	No
Amanda Martin	15	23	3.00	1.00	0.00	116.40	0.00	26.80	0.0		185.20	147.20	170.20	79%	8%	12%	21%	6.51%	Yes	No
Amynda Martin	4	2	5.80	0.00	0.00	6.50	0.00	0.00	0.0	22.5	40.80	34.80	36.80	85%	10%	5%	15%	1.54%	Yes	No
Jessica Mitchell	9	8	0.00	0.00	0.00	31.00	0.00	0.30	0.0		48.30	31.30	39.30	65%	19%	17%	35%	1.38%	No	No
Arianna Profato	1	8	0.00	0.00	0.00	20.30	0.00	1.90	0.0		31.20	22.20	30.20	71%	3%	26%	29%	0.98%	No	No
Robin Rippeth	7	0	0.00	14.50	0.00	3.10	0.00	0.50	0.0		25.10	18.10	18.10	72%	28%	0%	28%	0.80%	No	No
Kelly Roberts	21	24	21.10	0.00	0.00	57.20	0.00	8.70	0.0		132.00	87.00	111.00	66%	16%	18%	34%	3.85%	No	No
Claire Robitaille	14	14	2.00	0.00	0.00	50.50	0.00	0.90	0.0		81.40	53.40	67.40	66%	17%	17%	34%	2.36%	No	No
Jennifer Schwind	25	34	9.30	0.00	0.00	66.90	0.00	2.30	0.0		137.50	78.50	112.50	57%	18%	25%	43%	3.47%	No	No
Mike Selegue	11	59	2.30	0.00	0.00	86.40	11.20	0.00	0.0		169.90	99.90	158.90	59%	6%	35%	41%	4.42%	No	No
Ashley Shoemaker	4	7	0.00	0.00	0.00	14.90	0.00	0.00	0.0		25.90	14.90	21.90	58%	15%	27%	42%	0.66%	No	No
Samantha Skoczylas	14	32	4.90	0.00	0.00	28.90	30.00	1.50	0.0		111.30	65.30	97.30	59%	13%	29%	41%	2.89%	No	No
Sonya Slater	8	2	2.00	3.00	0.00	14.00	0.00	0.00	0.0		29.00	19.00	21.00	66%	28%	7%	34%	0.84%	No	No
Beth Sleeper	9	51	21.20	0.00	0.00	59.00	30.00	2.40	0.0		172.60	112.60	163.60	65%	5%	30%	35%	4.98%	No	No
Sheridan Smith	4	6	0.00	0.00	0.00	0.00	0.00	0.00	18.8		28.80	18.80	24.80	65%	14%	21%	35%	0.83%	No	No
Sarah Sohar	11	26	44.10	0.00	0.00	70.30	0.00	0.80	0.0		152.20	115.20	141.20	76%	7%	17%	24%	5.10%	No	No
Heather Stevens	12	39	10.40	0.00	0.00	59.80	37.50	7.00	0.0		165.70	114.70	153.70	69%	7%	24%	31%	5.07%	No	No
Cara Sussman	12.00	16.00	2.00	0.00	0.00	50.40	0.00	1.20	0.00		81.6	53.60	69.60	66%	15%	20%	34%	2.37%	No	No
Caleb Tipple	0.00	0.00	0.00	0.00	0.00	0.00	0.00	88.70	0.00		88.7	88.70	88.70					3.92%		
Thomas Vajen	5.00	6.00	0.00	0.00	0.00	0.00	0.00	0.00	13.50		24.5	13.50	19.50	55%	20%	24%	45%	0.60%	No	No
Miranda Zircher	12	24	0.00	0.00	0.00	77.40	33.00	2.10	0.0		148.50	112.50	136.50	76%	8%	16%	24%	4.98%	No	No
Sum Totals	412.00	624.00	230.60	41.50	0.00	1415.40	250.80	255.60	38.80	27.50	3296.20	2260.20	2884.20							
Average														66%	14%	20%	34%	2.70%		

* These clinicians do not have a daily scheduler therefore their totals are not reported in the missed or cancelled sessions.

% of Agency \$ Billed by Clinician

August	2009								Tot Units	% of Tot
	DA	EVAL	AOD	IND	Group	CSP	MED	Other		
Unit Rate	\$ 129.99	\$ 129.99	\$ 96.24	\$ 90	\$ 39.48	\$ 65	\$ 195	\$ 35		
Dean Bachelor	1.00	0.00	0.00	9.30	74.00	0.00	0.00	0.00		
	\$130	\$0	\$0	\$837	\$2,922	\$0	\$0	\$0	\$ 3,888.51	2.10%
Kimberly Blair	3.00	15.00	0.00	67.20	0.00	3.30	0.00	0.00		
	\$389.97	\$1,949.85	\$0.00	\$6,048.00	\$0.00	\$214.50	\$0.00	\$0.00	\$ 8,602.32	4.64%
Misty Coleman	6.00	0.00	0.00	71.20	0.00	2.70	0.00	0.00		
	\$779.94	\$0.00	\$0.00	\$6,408.00	\$0.00	\$175.50	\$0.00	\$0.00	\$ 7,363.44	3.97%
Janet Crabtree	0.00	0.00	0.00	0.00	0.00	90.20	0.00	0.00		
	\$0.00	\$0.00	\$0.00	\$0.00	\$0.00	\$5,863.00	\$0.00	\$0.00	\$ 5,863.00	3.16%
Scott Craft	3.30	0.00	0.00	38.70	9.60	0.30	0.00	5.00		
	\$428.97	\$0.00	\$0.00	\$3,483.00	\$379.01	\$19.50	\$0.00	\$175.00	\$ 4,485.48	2.42%
Rachel Cranmer	12.30	0.00	0.00	33.30	0.00	0.80	0.00	0.00		
	\$1,598.88	\$0.00	\$0.00	\$2,997.00	\$0.00	\$52.00	\$0.00	\$0.00	\$ 4,647.88	2.51%
Daniel DiSalvo	0.00	0.00	0.00	0.00	0.00	0.00	6.50	0.00		
	\$0.00	\$0.00	\$0.00	\$0.00	\$0.00	\$0.00	\$1,267.50	\$0.00	\$ 1,267.50	0.68%
Joe Dunson	10.00	5.00	0.00	56.30	0.00	0.60	0.00	0.00		
	\$1,299.90	\$649.95	\$0.00	\$5,067.00	\$0.00	\$39.00	\$0.00	\$0.00	\$ 7,055.85	3.80%
Tricia Foster	14.10	0.00	0.00	71.00	0.00	0.00	0.00	0.00		
	\$1,832.86	\$0.00	\$0.00	\$6,390.00	\$0.00	\$0.00	\$0.00	\$0.00	\$ 8,222.86	4.43%
Will Froilan	18.00	0.00	0.00	51.20	0.00	0.90	0.00	0.00		
	\$2,339.82	\$0.00	\$0.00	\$4,608.00	\$0.00	\$58.50	\$0.00	\$0.00	\$ 7,006.32	3.78%
Helka Gienapp	0.00	0.00	0.00	16.30	25.00	0.90	0.00	0.00		
	\$0.00	\$0.00	\$0.00	\$1,467.00	\$1,006.74	\$58.50	\$0.00	\$0.00	\$ 2,532.24	1.36%
Jodie Grafmiller	0.00	0.00	0.00	26.70	0.00	0.30	0.00	0.00		
	\$0.00	\$0.00	\$0.00	\$2,403.00	\$0.00	\$19.50	\$0.00	\$0.00	\$ 2,422.50	1.31%
Hope Gray	0.00	0.00	0.00	10.50	0.00	0.00	0.00	0.00		
	\$0.00	\$0.00	\$0.00	\$8,788.50	\$0.00	\$0.00	\$0.00	\$0.00	\$ 8,788.50	4.74%
Brad Hedges	0.00	3.00	0.00	2.30	0.00	0.00	0.00	0.00		
	\$0.00	\$389.97	\$0.00	\$207.00	\$0.00	\$0.00	\$0.00	\$0.00	\$ 596.97	0.32%
Stacy Ingraham	8.30	0.00	0.00	58.10	0.00	2.70	0.00	0.00		
	\$1,078.92	\$0.00	\$0.00	\$5,229.00	\$0.00	\$175.50	\$0.00	\$0.00	\$ 6,483.42	3.49%
Emily Joseph	23.30	0.00	0.00	50.60	0.00	6.40	0.00	0.00		
	\$3,028.77	\$0.00	\$0.00	\$4,554.00	\$0.00	\$416.00	\$0.00	\$0.00	\$ 7,998.77	4.31%
Joni Krzycki	3.20	0.00	0.00	15.80	0.00	1.70	0.00	0.00		
	\$415.97	\$0.00	\$0.00	\$1,422.00	\$0.00	\$110.50	\$0.00	\$0.00	\$ 1,948.47	1.05%
Amanda Martin	3.00	1.00	0.00	116.40	0.00	26.80	0.00	0.00		
	\$389.97	\$129.99	\$0.00	\$10,476.00	\$0.00	\$1,742.00	\$0.00	\$0.00	\$ 12,737.96	6.87%
Amynda Martin	5.80	0.00	0.00	6.50	0.00	0.00	0.00	22.50		
	\$753.94	\$0.00	\$0.00	\$585.00	\$0.00	\$0.00	\$0.00	\$787.50	\$ 2,126.44	1.15%
Jessica Mitchell	0.00	0.00	0.00	31.00	0.00	0.30	0.00	0.00		
	\$0.00	\$0.00	\$0.00	\$2,790.00	\$0.00	\$19.50	\$0.00	\$0.00	\$ 2,809.50	1.51%
Arianna Profato	0.00	0.00	0.00	1.00	0.00	0.00	0.00	0.00		
	\$0.00	\$0.00	\$0.00	\$90.00	\$0.00	\$0.00	\$0.00	\$0.00	\$ 90.00	0.05%
Robin Rippeth	0.00	14.50	0.00	3.10	0.00	0.50	0.00	0.00		
	\$0.00	\$1,884.86	\$0.00	\$279.00	\$0.00	\$32.50	\$0.00	\$0.00	\$ 2,196.36	1.18%
Kelly Roberts	21.10	0.00	0.00	57.20	0.00	8.70	0.00	0.00		
	\$2,742.79	\$0.00	\$0.00	\$5,148.00	\$0.00	\$565.50	\$0.00	\$0.00	\$ 8,456.29	4.56%
Claire Robitaille	2.00	0.00	0.00	50.50	0.00	0.90	0.00	0.00		
	\$259.98	\$0.00	\$0.00	\$4,545.00	\$0.00	\$58.50	\$0.00	\$0.00	\$ 4,863.48	2.62%
Jennifer Schwind	9.30	0.00	0.00	66.90	0.00	2.30	0.00	0.00		
	\$1,208.91	\$0.00	\$0.00	\$6,021.00	\$0.00	\$149.50	\$0.00	\$0.00	\$ 7,379.41	3.98%
Mike Selegue	2.30	0.00	0.00	86.40	11.20	0.00	0.00	0.00		
	\$298.98	\$0.00	\$0.00	\$7,776.00	\$442.18	\$0.00	\$0.00	\$0.00	\$ 8,517.15	4.59%
Ashley Shoemaker	0.00	0.00	0.00	2.20	0.00	0.40	0.00	0.00		
	\$0.00	\$0.00	\$0.00	\$1,841.40	\$0.00	\$0.00	\$0.00	\$0.00	\$ 1,841.40	0.99%
Samantha Skoczylas	4.90	0.00	0.00	28.90	30.00	1.50	0.00	0.00		
	\$636.95	\$0.00	\$0.00	\$2,601.00	\$1,184.40	\$97.50	\$0.00	\$0.00	\$ 4,519.85	2.44%
Sonya Slater	2.00	3.00	0.00	14.00	0.00	0.00	0.00	0.00		
	\$259.98	\$389.97	\$0.00	\$1,260.00	\$0.00	\$0.00	\$0.00	\$0.00	\$ 1,909.95	1.03%
Beth Steeper	16.60	0.00	0.00	34.80	0.00	1.20	0.00	0.00		
	\$2,157.83	\$0.00	\$0.00	\$3,132.00	\$0.00	\$78.00	\$0.00	\$0.00	\$ 5,367.83	2.89%
Sheridan Smith	0.00	0.00	0.00	0.00	0.00	0.00	18.80	0.00		
	\$0.00	\$0.00	\$0.00	\$0.00	\$0.00	\$0.00	\$3,666.00	\$0.00	\$ 3,666.00	1.98%
Sarah Sohar	8.90	0.00	0.00	0.00	0.00	0.00	0.00	0.00		
	\$1,156.91	\$0.00	\$0.00	\$0.00	\$0.00	\$0.00	\$0.00	\$0.00	\$ 1,156.91	0.62%
Heather Stevens	10.40	0.00	0.00	59.80	37.50	7.00	0.00	0.00		
	\$1,351.90	\$0.00	\$0.00	\$5,382.00	\$1,480.50	\$455.00	\$0.00	\$0.00	\$ 8,669.40	4.67%
Cara Sussman	2.00	0.00	0.00	50.40	0.00	1.20	0.00	0.00		
	\$259.98	\$0.00	\$0.00	\$4,536.00	\$0.00	\$78.00	\$0.00	\$0.00	\$ 4,873.98	2.63%
Caleb Tipple	0.00	0.00	0.00	0.00	0.00	88.70	0.00	0.00		
	\$0.00	\$0.00	\$0.00	\$0.00	\$0.00	\$5,765.50	\$0.00	\$0.00	\$ 5,765.50	3.11%
Thomas Vajen	\$0.00	\$0.00	\$0.00	\$0.00	\$0.00	\$0.00	\$5.10	\$0.00		
	\$0.00	\$0.00	\$0.00	\$0.00	\$0.00	\$0.00	\$994.50	\$0.00	\$ 994.50	0.54%
Miranda Zircher	0.00	0.00	0.00	77.40	33.00	2.10	0.00	0.00		
	\$0.00	\$0.00	\$0.00	\$6,966.00	\$1,302.84	\$136.50	\$0.00	\$0.00	\$ 8,405.34	4.53%
Sum Totals	\$24,802.09	\$5,394.59	\$0.00	\$123,336.90	\$8,717.18	\$16,380.00	\$5,928.00	\$962.50	\$185,521.26	

This chart represents the percentage of the total dollars billed by clinician.