

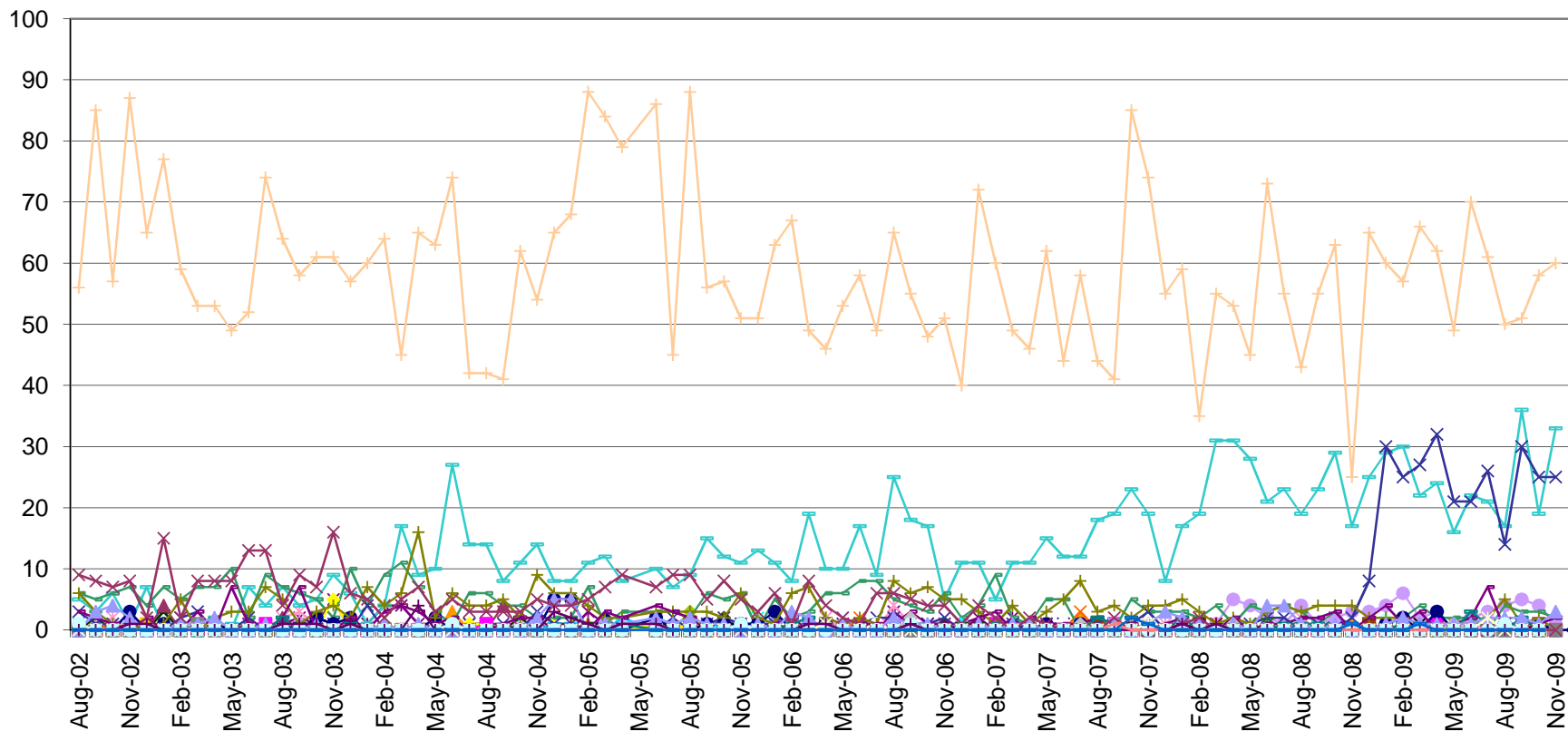
**DECEMBER 2009**

**UTILIZATION REVIEW**

<b>Clinician</b>	<b>Number of Clients Assigned</b>	<b>Number of Clients Seen</b>	<b>Number of Services Rendered</b>	<b>Average Number of Contacts Per Client Seen</b>
Dean Bachelor, M.Div.	60	29	79	2.74
Kimberly Blair, M.A., PC	84	32	74	2.31
Misty Coleman, MSW, LISW	117	35	79	2.26
Janet Crabtree, BA, CT	17	28	87	3.11
Scott Craft, Ph.D.	64	27	45	1.67
Rachel Cranmer, MA, PC	49	24	50	2.08
Daniel DiSalvo, CNP	20	20	21	1.05
Joe Dunson, M.Ed., PC	201	33	67	2.03
Tricia Foster, Ph.D.	135	34	72	2.12
Helka Gienapp, B.A.	70	14	53	3.79
Jodie Grafmiller, BA	43	14	46	3.29
Hope Gray	42	24	50	2.08
Brad Hedges, Ph.D., PCC	42	14	15	1.07
Stacy Ingraham, BA	93	36	76	2.11
Jennifer Jones	68	37	65	1.76
Kalinda Jones	55	25	85	3.40
Emily Joseph, BA	117	36	75	2.08
Joni Krzycki, Ph.D., PCC	69	14	23	1.64
Amanda Martin, M.Ed. PC	89	41	107	2.61
Amynda Martin, PsyD	56	9	22	2.44
Jessica Mitchell, MA, PC	45	17	38	2.24
Arianna Profato, BA	46	13	40	3.08
Robin Rippeth Ph.D., PCC	92	8	9	1.13
Kelly Roberts, MA	63	28	61	2.18
Claire Robitaille, M.S., LSW	91	21	55	2.62
Jennifer Schwind, M.A.	150	38	57	1.50
Mike Selegue, MSW, LISW	119	47	73	1.55
Ronak Shariati	82	24	48	2.00
Ashley Shoemaker	37	22	54	2.45
Sonya Slater, PsyD	24	12	27	2.25
Beth Sleeper	127	46	89	1.93
Sarah Sohar, MA, PC	93	45	97	2.16
Heather Stevens, MSW, LSW	86	43	110	2.56
Cara Sussman, B.A.	79	28	84	3.00
Caleb Tipple, B.S.	24	32	99	3.09
Thomas Vajen	45	51	51	1.00
Miranda Zircher, MS, PC	98	29	62	2.14
<b>Average</b>	<b>75</b>	<b>28</b>	<b>61</b>	<b>2.23</b>

The No Show rate for December was 22%. When considering both the no show rate and the cancellation rate, this figure is 57%.

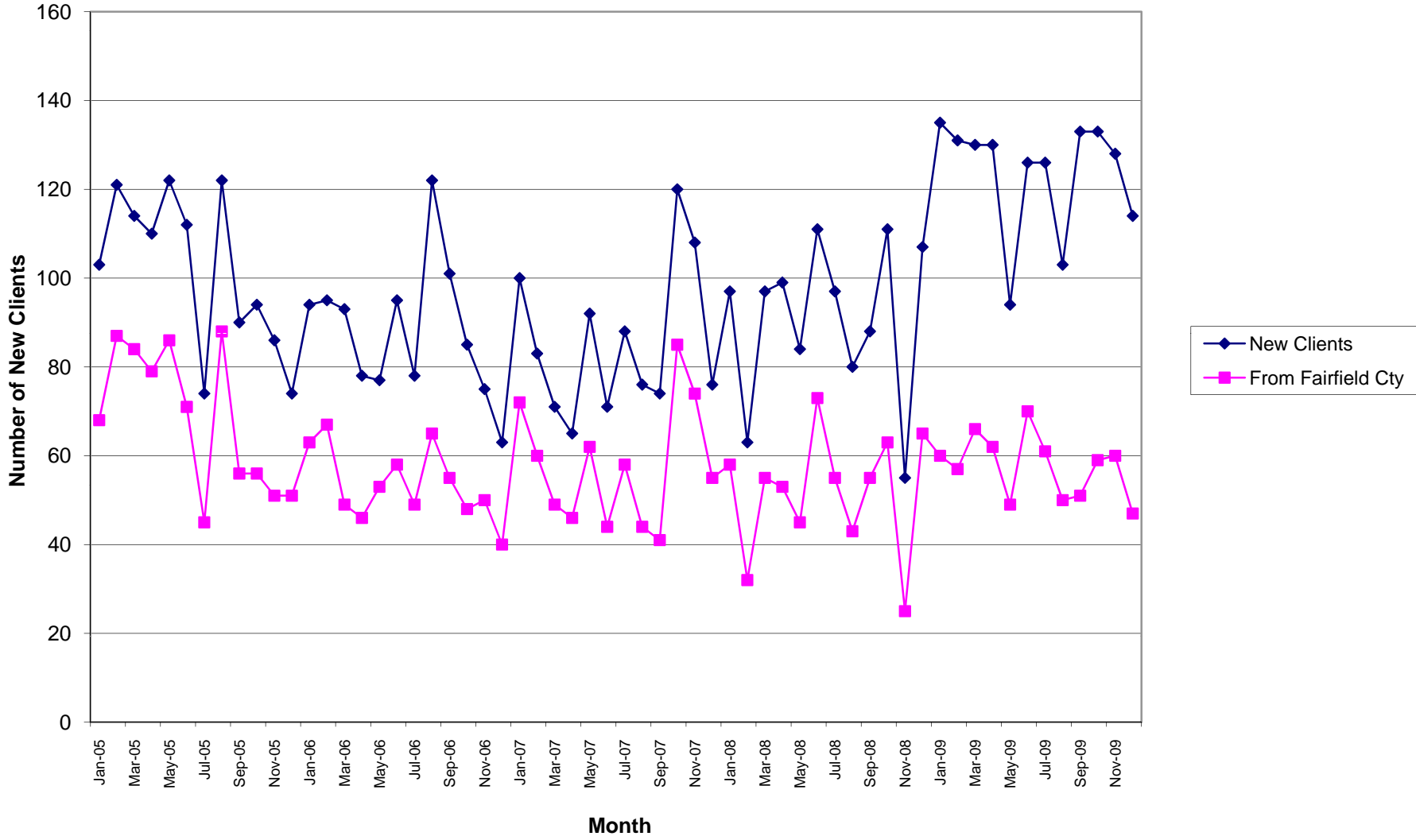
### Number of Intakes by County



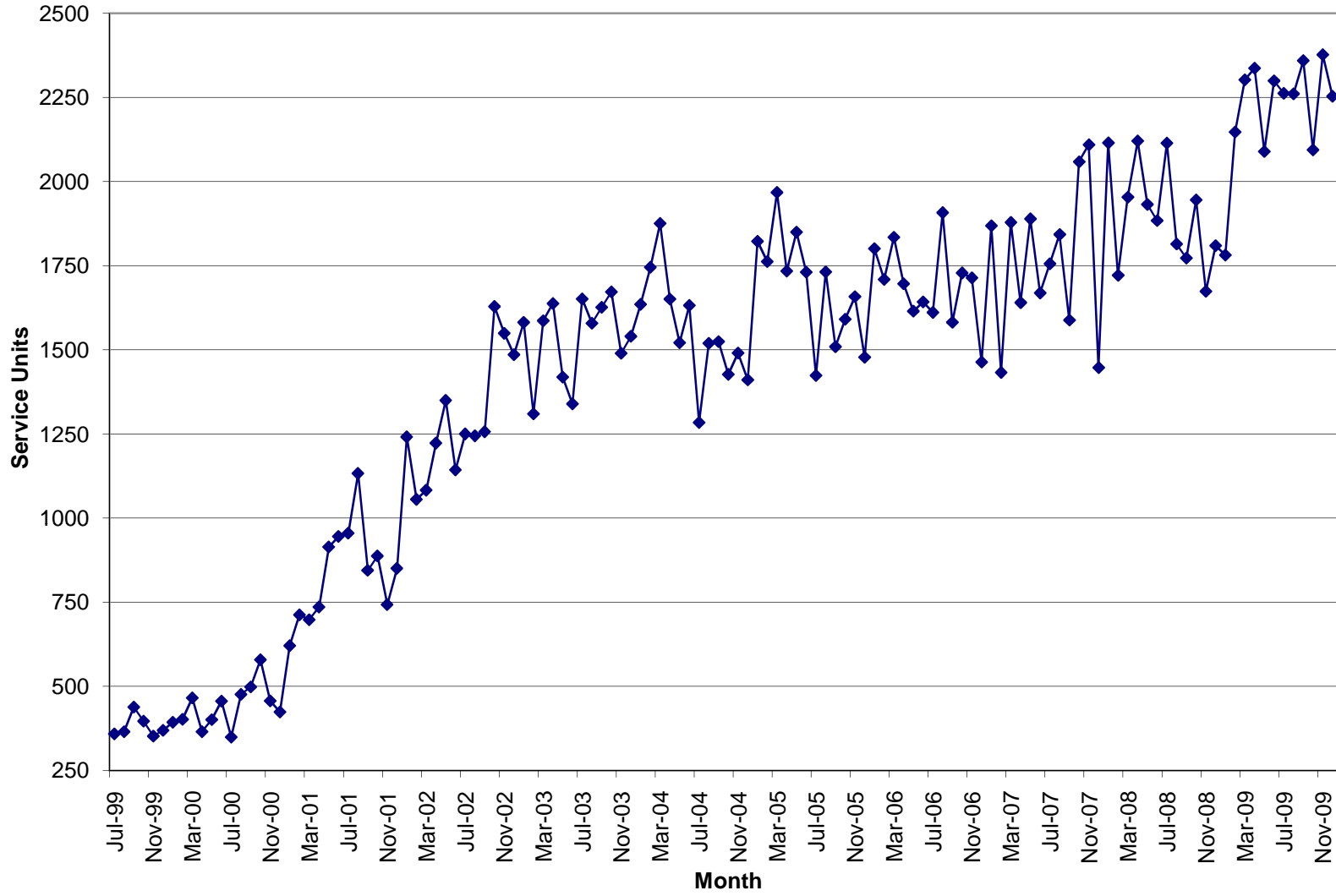
**Prior to 9/05 the numbers reported were somewhat inflated due to a report issue that has been corrected.**



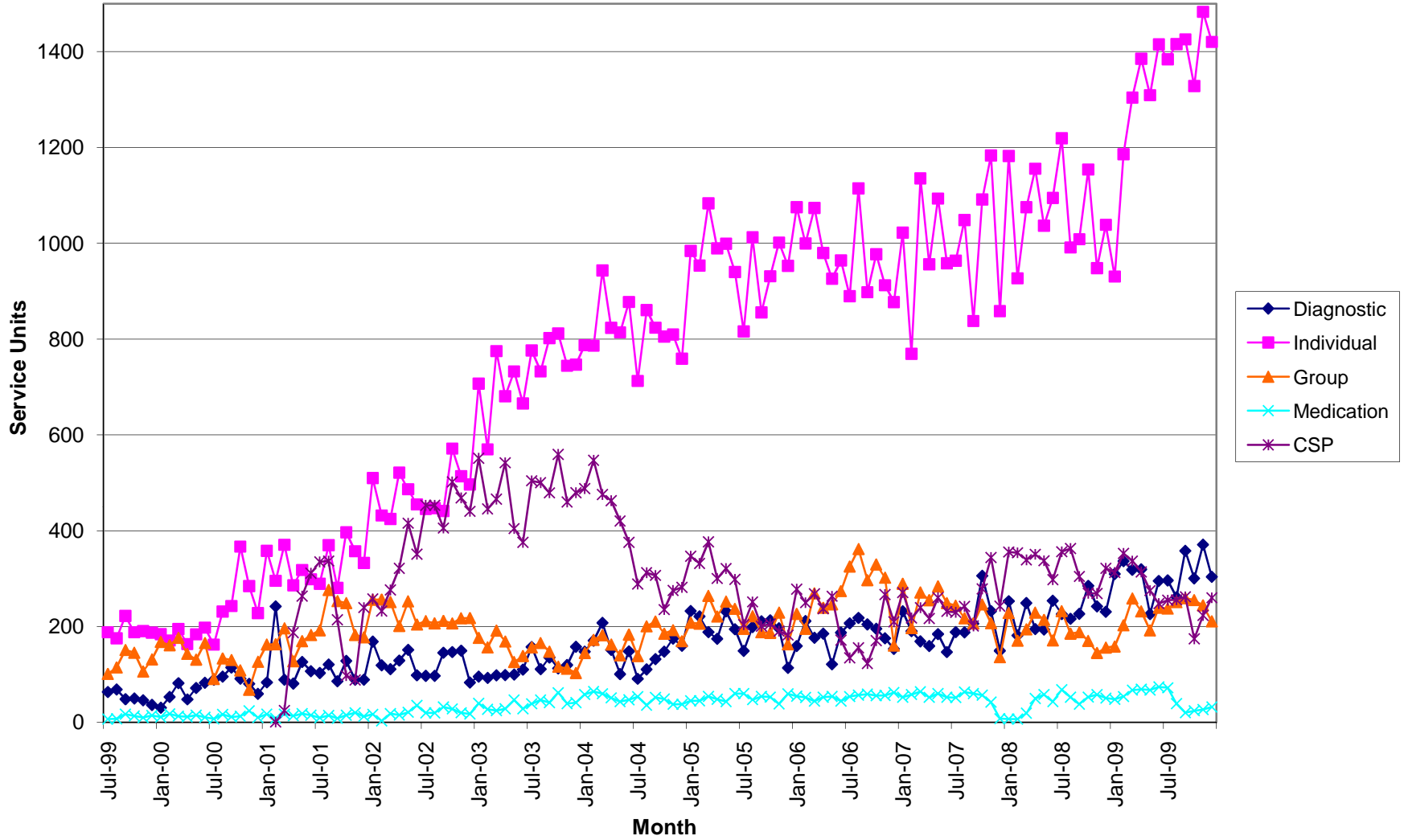
# New Clients



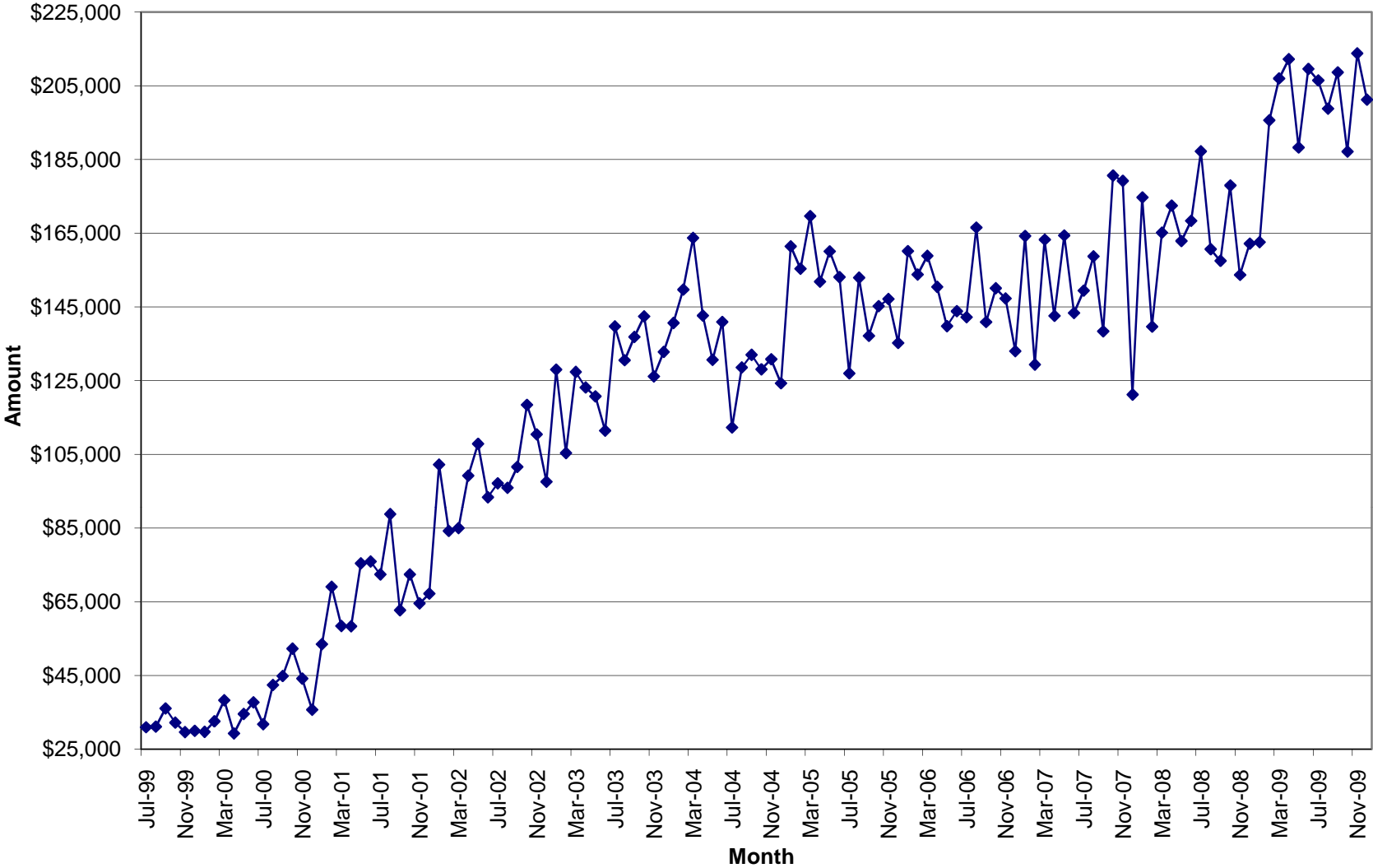
# Total Units of Service



# Units of Service



### Total Units \$



December 2009

Unit Production & Scheduling Proficiency by Clinician  
Mid Ohio Psychological Services

	Cancellations	Missed	Diagnostics	Evaluations	AOD Assessments	Individual	Group	Community Support	Medication	Other Units	Total Units	Billable Units	Units Billed+ Missed	Schedule Proficiency	% Canceled	% Missed	Lost Units due to C & M	% of Total Billable Units	High Scheduling Proficiency	Significantly Low Scheduling Proficiency
<b>Unit Rate</b>			<b>129.99</b>	<b>129.99</b>	<b>96.24</b>	<b>90</b>	<b>39.48</b>	<b>65</b>	<b>195</b>	<b>35</b>										
Dean Bachelor	46	33	13.00	0.00	0.00	27.00	80.00	0.80	0.0		199.80	120.80	153.80	79%	23%	17%	40%	5.36%	No	No
Kimberly Blair	16	18	10.60	7.10	0.00	58.60	0.00	3.60	0.0		113.90	79.90	97.90	70%	14%	16%	30%	3.55%	No	No
Misty Coleman	11	34	13.50	0.00	0.00	60.80	0.00	5.00	0.0		124.30	79.30	113.30	64%	9%	27%	36%	3.52%	No	No
Janet Crabtree	0	0	0.00	0.00	0.00	0.00	0.00	94.20	0.0		94.20	94.20	94.20					4.18%		
Scott Craft	12	9	0.00	0.00	0.00	24.50	2.60	1.90	0.0	8.0	58.00	37.00	46.00	64%	21%	16%	36%	1.64%	No	No
Rachel Cramner	21	24	6.80	0.00	0.00	39.20	0.00	2.60	0.0		93.60	48.60	72.60	52%	22%	26%	48%	2.16%	No	Yes
Daniel DiSalvo	8	10	0.00	0.00	0.00	0.00	0.00	0.00	10.5		28.50	10.50	20.50	37%	28%	35%	63%	0.47%	No	Yes
Joe Dunson	31	40	11.50	0.00	0.00	56.00	0.00	1.40	0.0		139.90	68.90	108.90	49%	22%	29%	51%	3.06%	No	Yes
Tricia Foster	17	21	5.60	0.00	0.00	67.60	0.00	1.00	0.0		112.20	74.20	95.20	66%	15%	19%	34%	3.29%	No	No
Helka Gienapp	11	6	6.20	0.00	0.00	22.70	30.30	1.30	0.0		77.50	60.50	66.50	78%	14%	8%	22%	2.69%	No	No
Jodi Grafmiller	8	11	1.50	0.00	0.00	40.40	0.00	1.40	0.0		62.30	43.30	54.30	70%	13%	18%	30%	1.92%	No	No
Hope Gray	22	25	0.00	0.00	0.00	45.60	0.00	0.00	0.0		92.60	45.60	70.60	49%	24%	27%	51%	2.02%	No	Yes
Brad Hedges	4	0	0.00	11.20	0.00	2.50	0.00	0.00	0.0		17.70	13.70	13.70	77%	23%	0%	23%	0.61%	No	No
Stacy Ingraham	20	21	9.10	0.00	0.00	64.60	0.00	2.00	0.0		116.70	75.70	96.70	65%	17%	18%	35%	3.36%	No	No
Jennifer Jones	10	24	18.90	2.50	0.00	47.30	0.00	0.20	0.0		102.90	68.90	92.90	67%	10%	23%	33%	3.06%	No	No
Kalinda Jones	24	26	14.80	0.00	0.00	67.80	9.60	2.30	0.0		144.50	94.50	120.50	65%	17%	18%	35%	4.19%	No	No
Emily Joseph	21	27	14.50	0.00	0.00	51.90	0.00	4.80	0.0		119.20	71.20	98.20	60%	18%	23%	40%	3.16%	No	No
Joni Krzycki	14	11	0.00	5.90	0.00	16.90	0.00	1.80	0.0		49.60	24.60	35.60	50%	28%	22%	50%	1.09%	No	Yes
Amanda Martin	30	11	6.90	0.00	0.00	77.00	0.00	10.00	0.0		134.90	93.90	104.90	70%	22%	8%	30%	4.17%	No	No
Amynda Martin	7	2	5.40	0.00	0.00	7.00	0.00	0.90	0.0	18.5	40.80	31.80	33.80	78%	17%	5%	22%	1.41%	No	No
Jessica Mitchell	10	12	6.30	0.00	0.00	33.60	0.00	0.00	0.0		61.90	39.90	51.90					1.77%	No	Yes
Arianna Profato	3	10	1.00	0.00	0.00	29.80	0.00	3.90	0.0		47.70	34.70	44.70	73%	6%	21%	27%	1.54%	No	No
Robin Rippeth	3	3	0.00	9.60	0.00	3.30	0.00	0.40	0.0		19.30	13.30	16.30	69%	16%	16%	31%	0.59%	No	No
Kelly Roberts	12	30	7.60	0.00	0.00	54.00	0.00	3.30	0.0		106.90	64.90	94.90	61%	11%	28%	39%	2.88%	No	No
Claire Robitaille	15	17	6.40	0.00	0.00	48.00	0.00	1.20	0.0		87.60	55.60	72.60	63%	17%	19%	37%	2.47%	No	No
Jennifer Schwind	21	30	7.40	0.00	0.00	40.50	0.00	1.00	0.0		99.90	48.90	78.90	49%	21%	30%	51%	2.17%	No	Yes
Mike Selegue	19	41	10.00	0.00	0.00	54.80	6.00	0.00	0.0		130.80	70.80	111.80	54%	15%	31%	46%	3.14%	No	Yes
Ronak Shariati	19	22	14.70	4.30	0.00	21.20	7.90	4.50	0.0		93.60	52.60	74.60	56%	20%	24%	44%	2.33%	No	No
Ashley Shoemaker	10	19	0.00	0.00	0.00	46.70	0.00	1.30	0.0		77.00	48.00	67.00	62%	13%	25%	38%	2.13%	No	No
Sonya Slater	3	7	0.00	7.00	0.00	14.00	0.00	1.30	0.0		32.30	22.30	29.30	69%	9%	22%	31%	0.99%	No	No
Beth Sleeper	30	52	10.70	5.20	0.00	57.50	21.00	1.90	0.0		178.30	96.30	148.30	54%	17%	29%	46%	4.27%	No	Yes
Sarah Sohar	19	30	30.20	0.00	0.00	67.40	0.00	1.70	0.0		148.30	99.30	129.30	67%	13%	20%	33%	4.41%	No	No
Heather Stevens	24	44	13.60	0.00	0.00	55.80	51.40	5.20	0.0		194.00	126.00	170.00	65%	12%	23%	35%	5.59%	No	No
Cara Sussman	18.00	24.00	2.50	0.00	0.00	66.40	0.00	5.00	0.00		115.9	73.90	97.90	64%	16%	21%	36%	3.28%	No	No
Caleb Tipple	0.00	0.00	0.00	0.00	0.00	0.00	0.00	90.70	0.00		90.7	90.70	90.70					4.03%		
Thomas Vajen	9.00	4.00	0.00	0.00	0.00	0.00	0.00	0.00	21.40		34.4	21.40	25.40	62%	26%	12%	38%	0.95%	No	No
Miranda Zircher	52	31	2.00	0.00	0.00	49.80	2.00	3.30	0.0		140.10	57.10	88.10	41%	37%	22%	59%	2.53%	No	Yes
<b>Sum Totals</b>	<b>600.00</b>	<b>729.00</b>	<b>250.70</b>	<b>52.80</b>	<b>0.00</b>	<b>1420.20</b>	<b>210.80</b>	<b>259.90</b>	<b>31.90</b>	<b>26.50</b>	<b>3581.80</b>	<b>2252.80</b>	<b>2981.80</b>	<b>62%</b>	<b>18%</b>	<b>20%</b>	<b>38%</b>	<b>2.70%</b>		
<b>Average</b>																				

\* These clinicians do not have a daily scheduler therefore their totals are not reported in the missed or cancelled sessions.

**% of Agency \$ Billed by Clinician**

December	2009								Tot Units	% of Tot
	DA	Eval	AOD	IND	Group	CSP	MED	Other		
Unit Rate	\$ 129.99	\$ 129.99	\$ 96.24	\$ 90	\$ 39.48	\$ 65	\$ 195	\$ 35		
Dean Bachelor	13.00	0.00	0.00	27.00	80.00	0.80	0.00	0.00		
	\$1,690	\$0	\$0	\$2,430	\$3,158	\$52	\$0	\$0	\$ 7,330.27	2.43%
Kimberly Blair	10.60	7.10	0.00	58.60	0.00	3.60	0.00	0.00		
	\$1,377.89	\$922.93	\$0.00	\$5,274.00	\$0.00	\$234.00	\$0.00	\$0.00	\$ 7,808.82	2.59%
Misty Coleman	13.50	0.00	0.00	60.80	0.00	5.00	0.00	0.00		
	\$1,754.87	\$0.00	\$0.00	\$5,472.00	\$0.00	\$325.00	\$0.00	\$0.00	\$ 7,551.87	2.50%
Janet Crabtree	0.00	0.00	0.00	0.00	0.00	94.20	0.00	0.00		
	\$0.00	\$0.00	\$0.00	\$0.00	\$0.00	\$6,123.00	\$0.00	\$0.00	\$ 6,123.00	2.03%
Scott Craft	0.00	0.00	0.00	24.50	2.60	1.90	0.00	8.00		
	\$0.00	\$0.00	\$0.00	\$2,205.00	\$102.65	\$123.50	\$0.00	\$280.00	\$ 2,711.15	0.90%
Rachel Cranmer	6.80	0.00	0.00	39.20	0.00	2.60	0.00	0.00		
	\$883.93	\$0.00	\$0.00	\$3,528.00	\$0.00	\$169.00	\$0.00	\$0.00	\$ 4,580.93	1.52%
Daniel DiSalvo	0.00	0.00	0.00	0.00	0.00	0.00	10.50	0.00		
	\$0.00	\$0.00	\$0.00	\$0.00	\$0.00	\$0.00	\$2,047.50	\$0.00	\$ 2,047.50	0.68%
Joe Dunson	11.50	0.00	0.00	56.00	0.00	1.40	0.00	0.00		
	\$1,494.89	\$0.00	\$0.00	\$5,040.00	\$0.00	\$91.00	\$0.00	\$0.00	\$ 6,625.89	2.19%
Tricia Foster	5.60	0.00	0.00	67.60	0.00	1.00	0.00	0.00		
	\$727.94	\$0.00	\$0.00	\$6,084.00	\$0.00	\$65.00	\$0.00	\$0.00	\$ 6,876.94	2.28%
Helka Gienapp	6.20	0.00	0.00	22.70	30.30	1.30	0.00	0.00		
	\$805.94	\$0.00	\$0.00	\$2,043.00	\$1,196.24	\$84.50	\$0.00	\$0.00	\$ 4,129.68	1.37%
Jodie Grafmiller	0.00	0.00	0.00	26.70	0.00	0.30	0.00	0.00		
	\$0.00	\$0.00	\$0.00	\$2,403.00	\$0.00	\$19.50	\$0.00	\$0.00	\$ 2,422.50	0.80%
Hope Gray	0.00	0.00	0.00	10.50	0.00	0.00	0.00	0.00		
	\$0.00	\$0.00	\$0.00	\$25,515.00	\$0.00	\$0.00	\$0.00	\$0.00	\$ 25,515.00	8.45%
Brad Hedges	0.00	11.20	0.00	2.50	0.00	0.00	0.00	0.00		
	\$0.00	\$1,455.89	\$0.00	\$225.00	\$0.00	\$0.00	\$0.00	\$0.00	\$ 1,680.89	0.56%
Stacy Ingraham	9.10	0.00	0.00	64.60	0.00	2.00	0.00	0.00		
	\$1,182.91	\$0.00	\$0.00	\$5,814.00	\$0.00	\$130.00	\$0.00	\$0.00	\$ 7,126.91	2.36%
Emily Joseph	14.50	0.00	0.00	51.90	0.00	4.80	0.00	0.00		
	\$1,884.86	\$0.00	\$0.00	\$4,671.00	\$0.00	\$312.00	\$0.00	\$0.00	\$ 6,867.86	2.27%
Joni Krzycki	0.00	5.90	0.00	16.90	0.00	1.80	0.00	0.00		
	\$0.00	\$766.94	\$0.00	\$1,521.00	\$0.00	\$117.00	\$0.00	\$0.00	\$ 2,404.94	0.80%
Amanda Martin	6.90	0.00	0.00	77.00	0.00	10.00	0.00	0.00		
	\$96.931	\$0.00	\$0.00	\$6,930.00	\$0.00	\$650.00	\$0.00	\$0.00	\$ 8,476.93	2.81%
Amynda Martin	5.40	0.00	0.00	7.00	0.00	0.90	0.00	18.50		
	\$701.95	\$0.00	\$0.00	\$630.00	\$0.00	\$58.50	\$0.00	\$647.50	\$ 2,037.95	0.67%
Jessica Mitchell	6.30	0.00	0.00	33.60	0.00	0.00	0.00	0.00		
	\$818.94	\$0.00	\$0.00	\$3,024.00	\$0.00	\$0.00	\$0.00	\$0.00	\$ 3,842.94	1.27%
Arianna Profato	0.00	0.00	0.00	1.00	0.00	0.00	0.00	0.00		
	\$0.00	\$0.00	\$0.00	\$90.00	\$0.00	\$0.00	\$0.00	\$0.00	\$ 90.00	0.03%
Robin Rippeth	0.00	9.60	0.00	3.30	0.00	0.40	0.00	0.00		
	\$0.00	\$1,247.90	\$0.00	\$297.00	\$0.00	\$26.00	\$0.00	\$0.00	\$ 1,570.90	0.52%
Kelly Roberts	7.60	0.00	0.00	54.00	0.00	3.30	0.00	0.00		
	\$987.92	\$0.00	\$0.00	\$4,860.00	\$0.00	\$214.50	\$0.00	\$0.00	\$ 6,062.42	2.01%
Claire Robitaille	6.40	0.00	0.00	48.00	0.00	1.20	0.00	0.00		
	\$831.94	\$0.00	\$0.00	\$4,320.00	\$0.00	\$78.00	\$0.00	\$0.00	\$ 5,229.94	1.73%
Jennifer Schwind	7.40	0.00	0.00	40.50	0.00	1.00	0.00	0.00		
	\$961.93	\$0.00	\$0.00	\$3,645.00	\$0.00	\$65.00	\$0.00	\$0.00	\$ 4,671.93	1.55%
Mike Selegue	10.00	0.00	0.00	54.80	6.00	0.00	0.00	0.00		
	\$1,299.90	\$0.00	\$0.00	\$4,932.00	\$236.88	\$0.00	\$0.00	\$0.00	\$ 6,468.78	2.14%
Ashley Shoemaker	0.00	0.00	0.00	46.70	0.00	1.30	0.00	\$0.00		
	\$0.00	\$0.00	\$0.00	\$113,481.00	\$0.00	\$67.60	\$0.00	0	\$ 113,548.60	37.59%
Sonya Slater	0.00	7.00	0.00	14.00	0.00	1.30	0.00	0.00		
	\$0.00	\$909.93	\$0.00	\$1,260.00	\$0.00	\$84.50	\$0.00	\$0.00	\$ 2,254.43	0.75%
Beth Sleeper	10.70	5.20	0.00	57.50	21.00	1.90	0.00	0.00		
	\$1,390.89	\$675.95	\$0.00	\$5,175.00	\$829.08	\$123.50	\$0.00	\$0.00	\$ 8,194.42	2.71%
Sarah Sohar	30.20	0.00	0.00	67.40	0.00	1.70	0.00	0.00		
	\$3,925.70	\$0.00	\$0.00	\$6,066.00	\$0.00	\$110.50	\$0.00	\$0.00	\$ 10,102.20	3.34%
Heather Stevens	13.60	0.00	0.00	55.80	51.40	5.20	0.00	0.00		
	\$1,767.86	\$0.00	\$0.00	\$5,022.00	\$2,029.27	\$338.00	\$0.00	\$0.00	\$ 9,157.14	3.03%
Cara Sussman	2.50	0.00	0.00	66.40	0.00	5.00	0.00	0.00		
	\$324.98	\$0.00	\$0.00	\$5,976.00	\$0.00	\$325.00	\$0.00	\$0.00	\$ 6,625.98	2.19%
Caleb Tipple	0.00	0.00	0.00	0.00	0.00	90.70	0.00	0.00		
	\$0.00	\$0.00	\$0.00	\$0.00	\$0.00	\$5,895.50	\$0.00	\$0.00	\$ 5,895.50	1.95%
Thomas Vajen	\$0.00	\$0.00	\$0.00	\$0.00	\$0.00	\$0.00	\$5.10	\$0.00		
	\$0.00	\$0.00	\$0.00	\$0.00	\$0.00	\$0.00	\$994.50	\$0.00	\$ 994.50	0.33%
Miranda Zircher	2.00	0.00	0.00	49.80	2.00	3.30	0.00	0.00		
	\$259.98	\$0.00	\$0.00	\$4,482.00	\$78.96	\$214.50	\$0.00	\$0.00	\$ 5,035.44	1.67%
Sum Totals	\$25,972.00	\$5,979.54	\$0.00	\$242,415.00	\$7,631.48	\$16,096.60	\$3,042.00	\$927.50	\$302,064.13	

This chart represents the percentage of the total dollars billed by clinician.